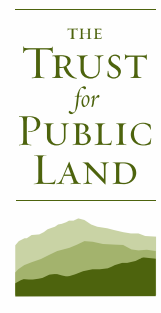




White Moose Program: Scaling Up Conservation Efforts





Crocker Mountain



“Your Western is our Eastern”

- Northern Appalachians
- Boundary Mountains
- Longfellow Mountains
- Western Mountains and Lakes
- Mahoosucs and High Peaks Initiative
- Upper Androscoggin – Mahoosucs – High Peaks Initiative
- White Mountains to Moosehead Lake Program

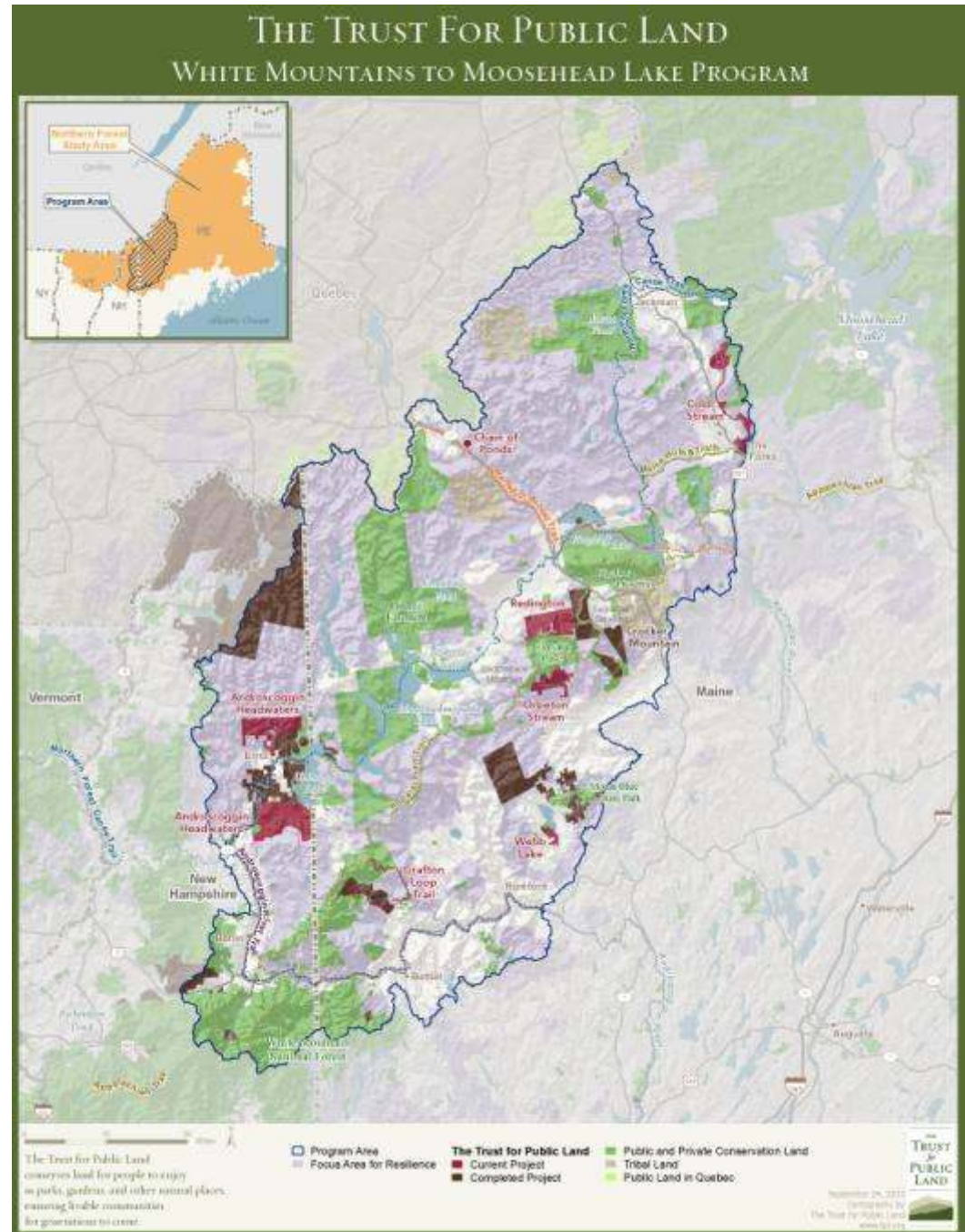
White-Moose





White Mountains to Moosehead Lake Program

- 2.7 Million Acres
- Story of Connections
 - Forest Blocks and Habitat
 - Trails
 - Communities

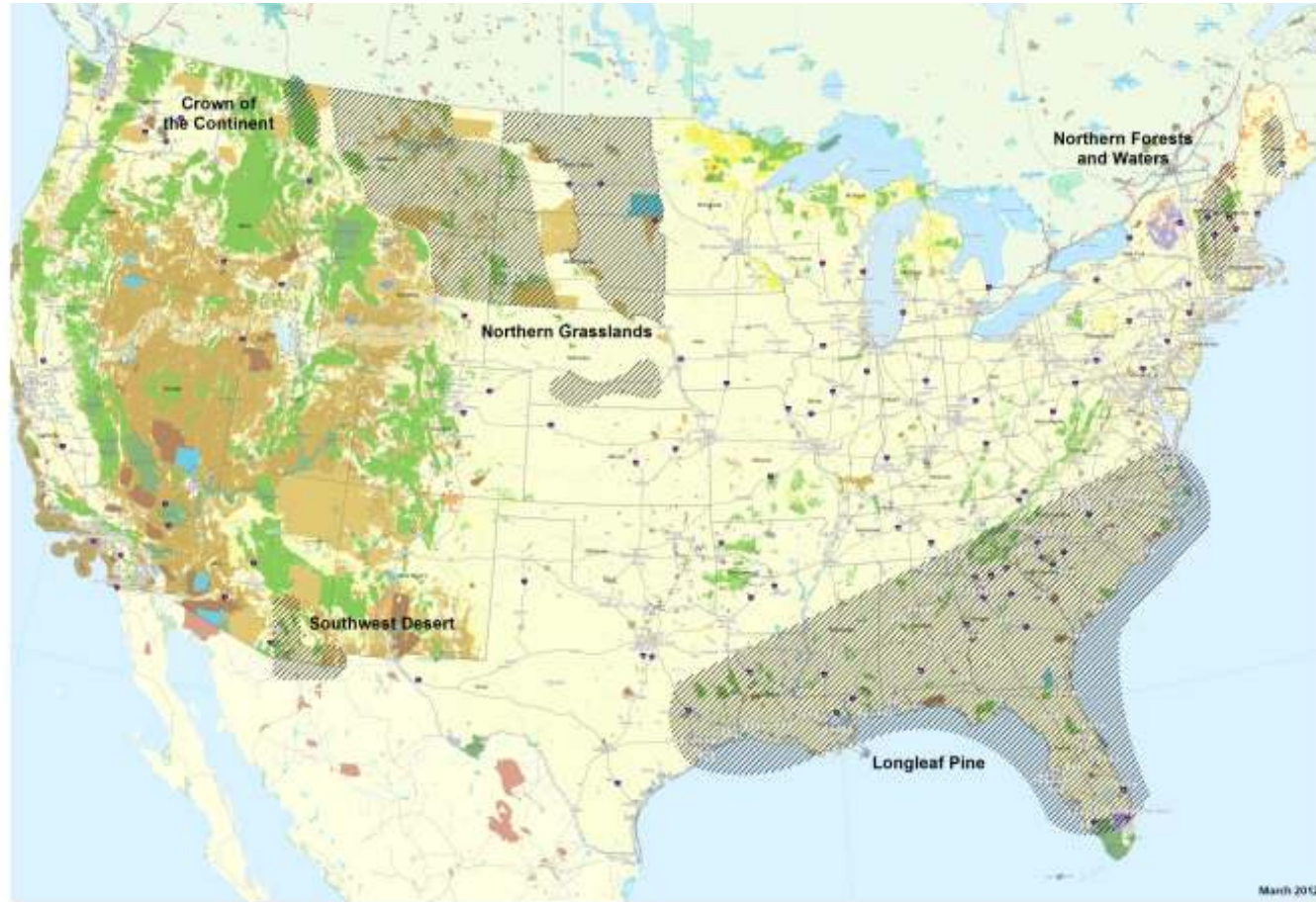




Locally Driven, Partner Supported, and Nationally Significant

- Local Initiatives
 - The Mahoosuc Initiative & The High Peaks Initiative
 - The Northern Forest Investment Zone: Androscoggin Valley-Mahoosuc Region Pilot
- Federal & State Partner Opportunities
 - National Park Service
 - U.S. Fish and Wildlife Service: Umbagog and North Atlantic LCC
 - USDA: Forest Service & White Mountain National Forest ; Natural Resources Conservation Service, Rural Development,
- New England Regional / International
 - Staying Connected
 - Two Countries One Forest
- Other private support for conservation
 - State, regional, national private foundations & Individuals

Leverage our Brand; America's Great Outdoors



Moving from Opportunistic to Intentional

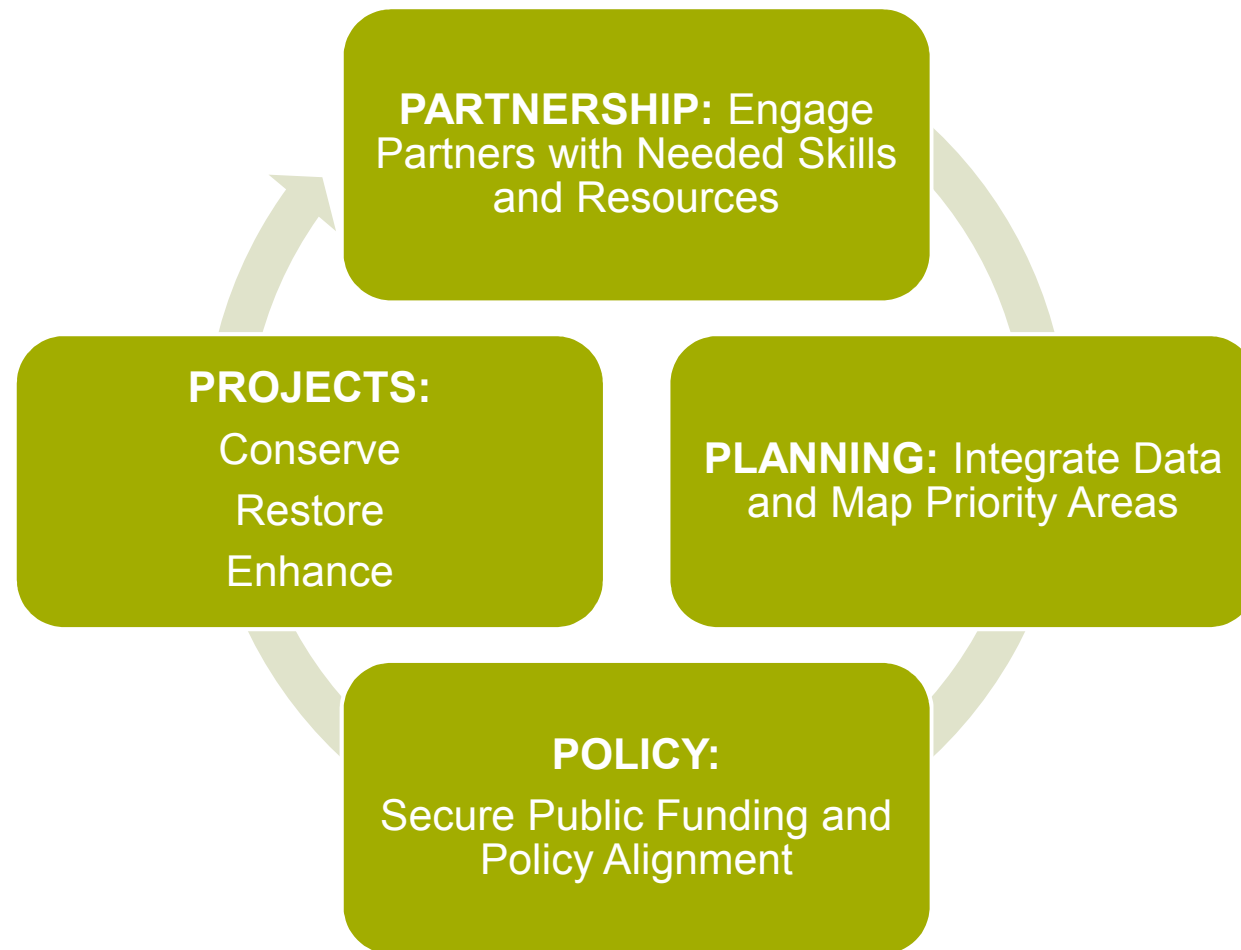
Project - Oriented	Programmatic
Individual Project Impact	Program Impact
Mapping Projects	Research and GIS Analysis
Mission Delivery	Mission Alignment
Bucks and Acres	Outcome Oriented
Accidental Overlap	Intentional Value-Added

White Moose: Moving from v1.0 to v2.0

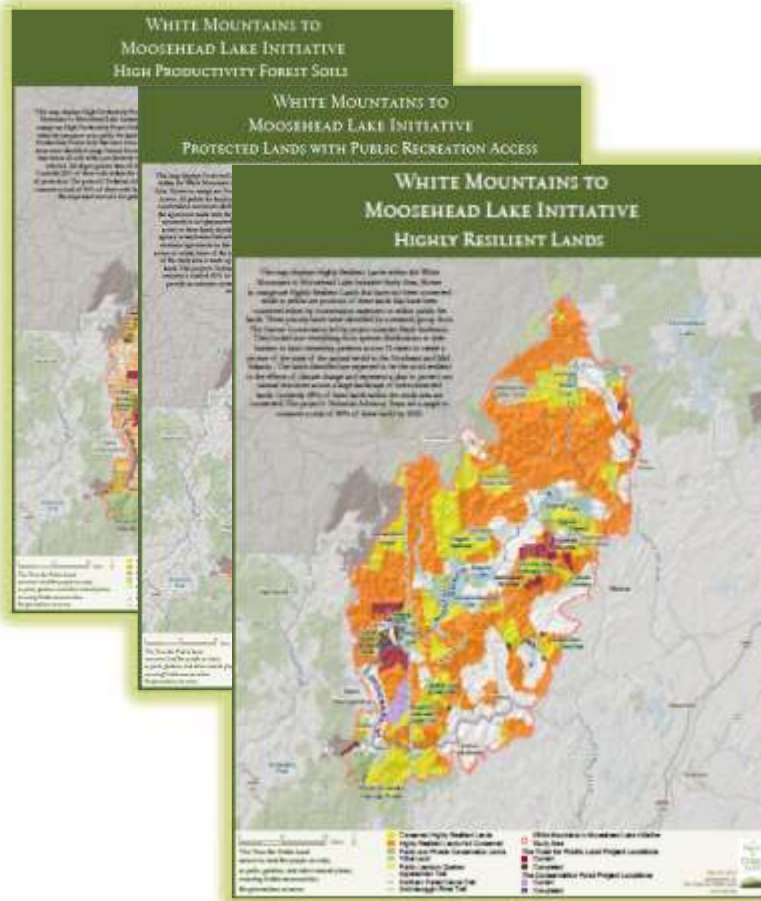


- Conserve **whole systems** that deliver our missions
- Tie **parcel-level** actions to **landscape-level** objectives
- Move the finish line from **acres** to **outcomes**

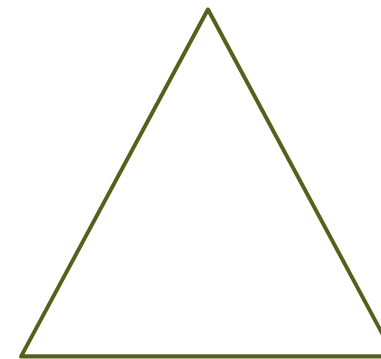
Impact at a Larger Scale: A “4-P” Template



Align Partnerships Along Outcomes



Intact Resilient
Forest Blocks



Rural
Community
Health

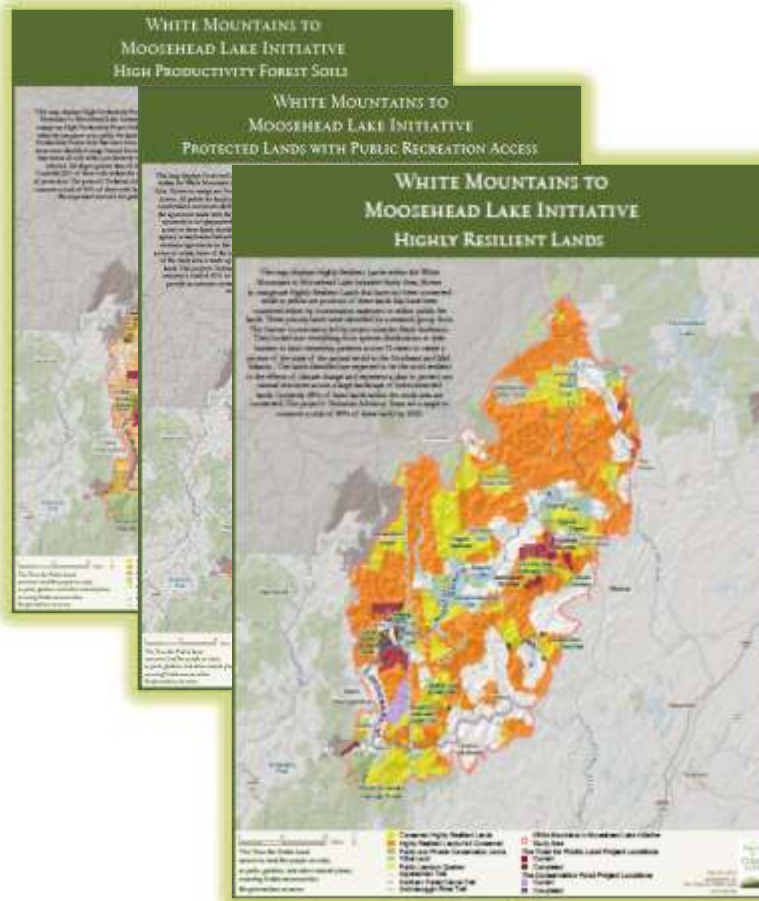
Signature
Recreation
Experience



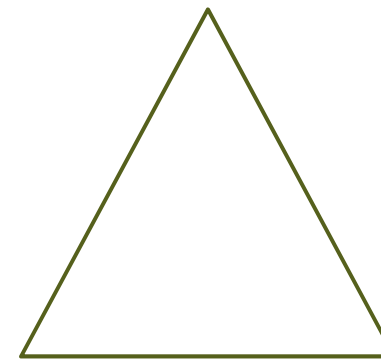
Outcome Oriented

- Keeping Intact Large Forest Blocks
 - Connectivity (North/South & Elevational)
 - Working Forests
 - Climate Resilient Landscape
 - Shaded Stream Corridors / Stream Water Temperature
- Protecting the Signature Recreation Experience
 - Trail Connectivity
 - Access – Connecting People to the Land
 - Diversity of Experience
- Preserving and Enhancing Rural Community “Health” (Communities, People, Local Economies)
 - Year-Round Jobs
 - Resident Retention and Growth

Align the Partnerships Along Outcomes



Intact Resilient
Forest Blocks



Rural
Community
Health

Signature
Recreation
Experience

Historical & Cultural

Align the Partnerships Along Expertise and Strengths



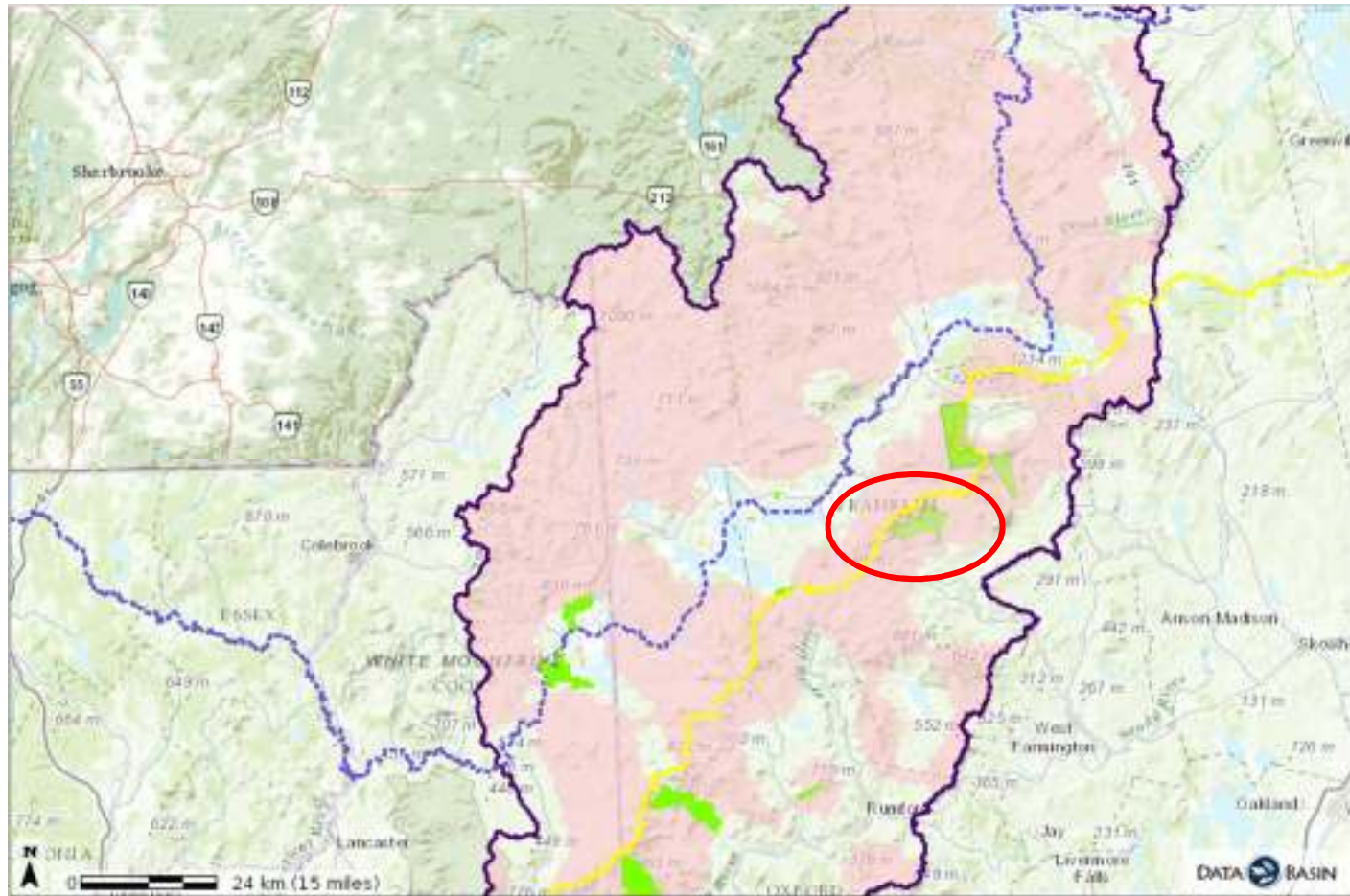
- Play to Respective Core Strengths
- Replace competition with collaboration
- Build long-term relationships with partners and funders
- Be Prepared for Opportunities – Seek Intentionality

Plan - Decision Support: DataBasin Portal

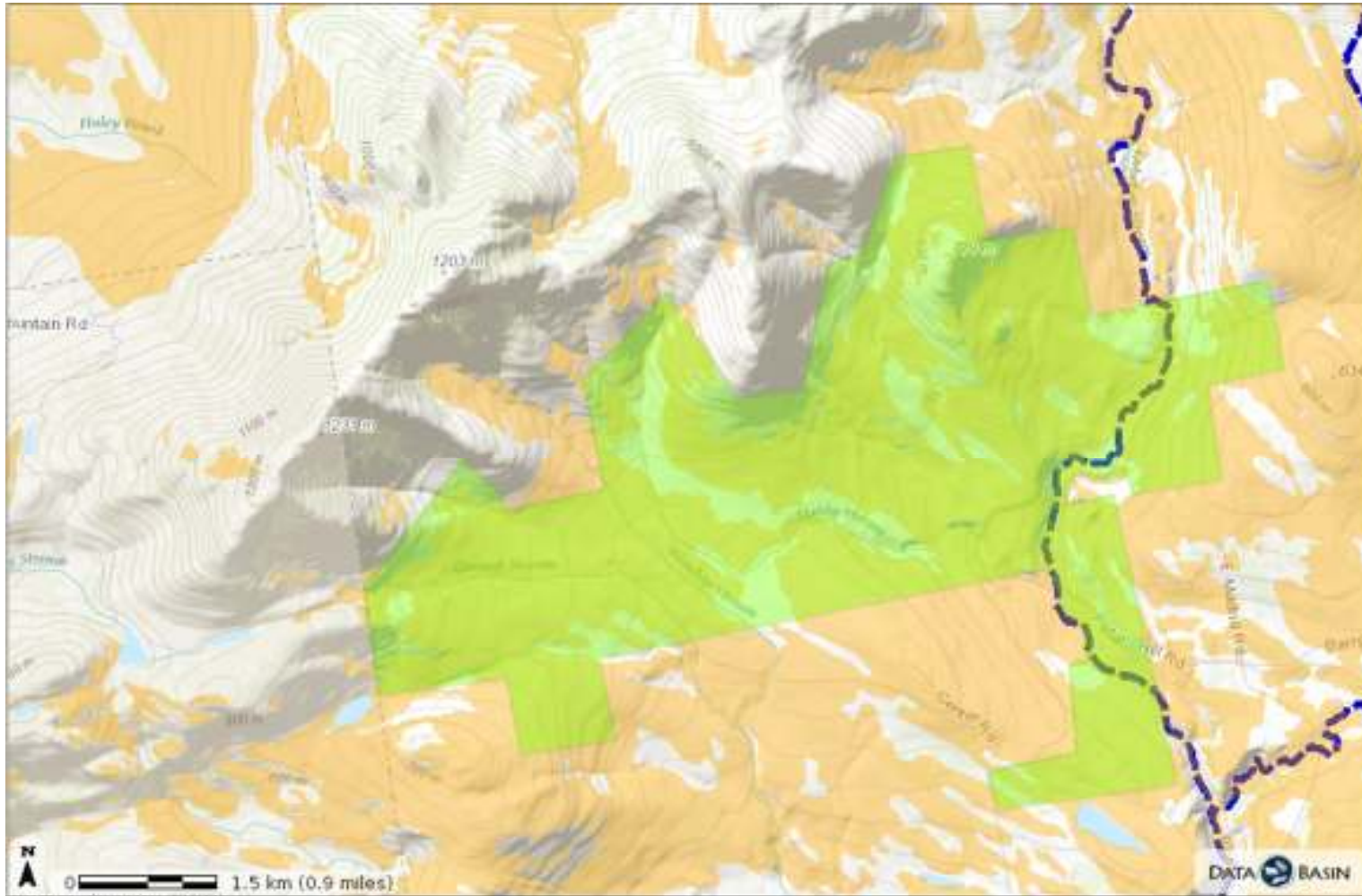
The screenshot displays the DataBasin portal interface. At the top, the 'DATA BASIN' logo is accompanied by navigation links: HOME | ABOUT | BLOG | HELP | DONATE | LANGUAGE: English | LOG OUT. Below the logo, a search bar and a 'Search This Group' button are visible. A horizontal menu contains tabs for 'My Workspace', 'Datasets', 'Maps', 'Galleries', 'People', and 'Groups'. A green banner at the top right says 'Welcome Brenda Faber'. On the left, a sidebar for the 'White Mountains to Moosehead Lake Initiative' group lists navigation options: Group Home, Profile, Bookmarks, Discussions, Members (8), Membership Requests (0), and Supporting Documents. Below this is a user profile for 'Brenda Faber' with a 'Messages' icon and a list of actions: 'Create a Map', 'Import a Dataset', 'Create a Group', and 'Create a Gallery'. The main content area shows the group's title and a 'Manage Group' button. A large text box contains a 'Welcome' message, a 'Partners Data Exchange' heading, and a list of site features: sharing data with partners, creating custom maps, and analyzing conservation projects. It also includes instructions for first-time visitors to check the 'Supporting Documents' menu and provides links for 'Measures of Progress' and 'Project Partners'. The background of the main content area features a scenic image of mountains.

Prioritize and Measure Actions Against Objectives

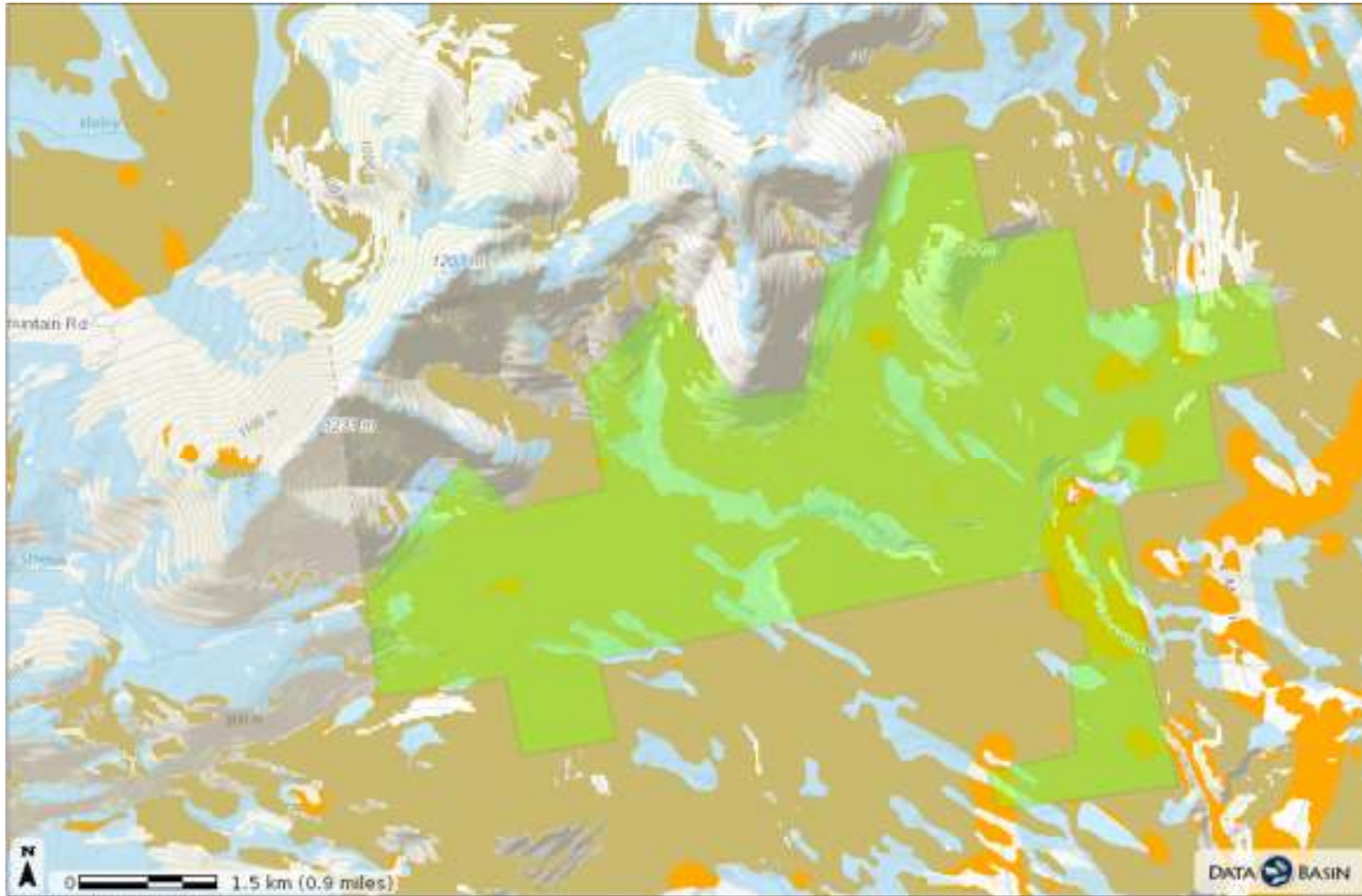
“Open-Source” GIS: To Prioritize, Integrate, Measure



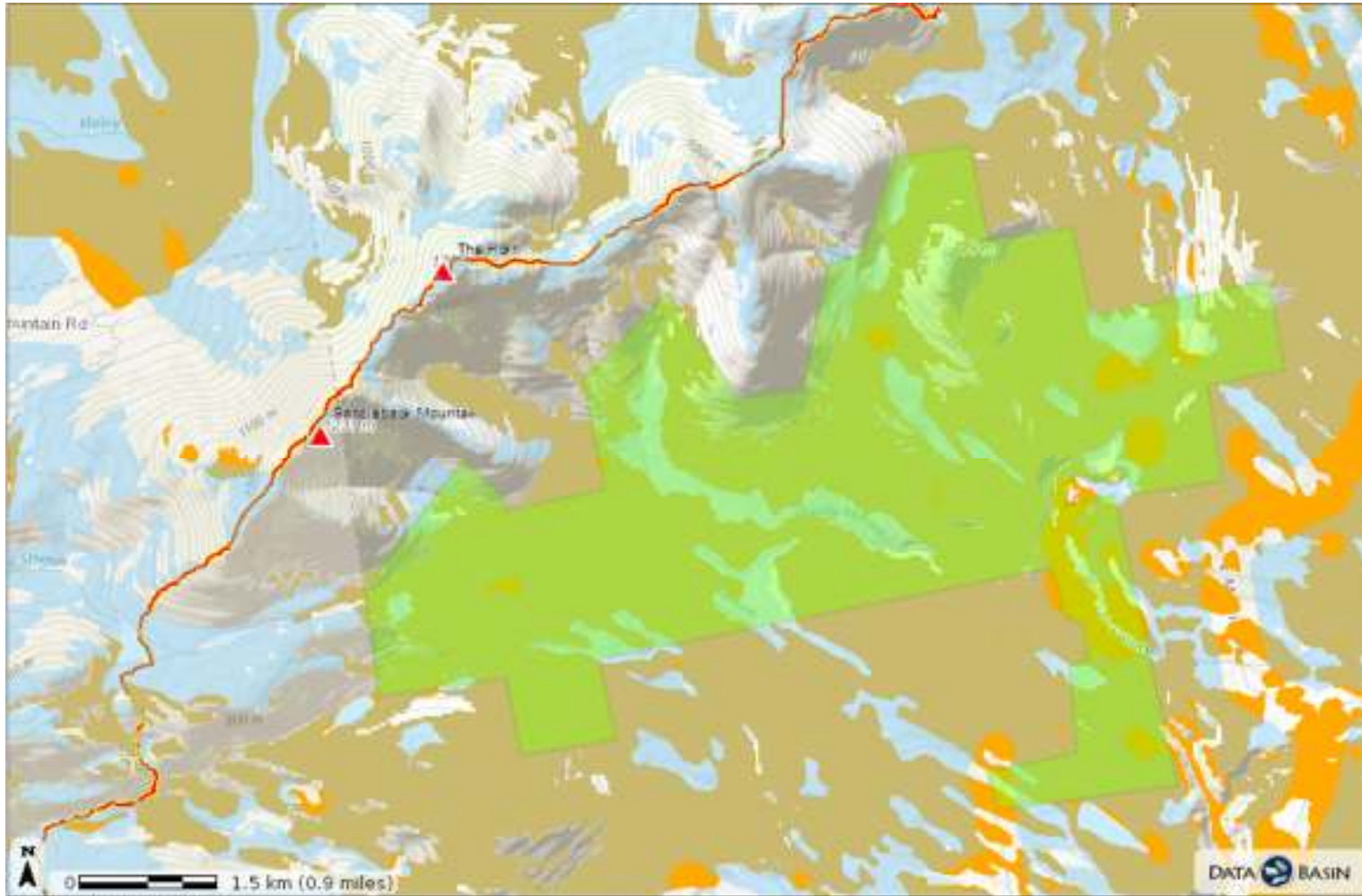
Orbeton Stream



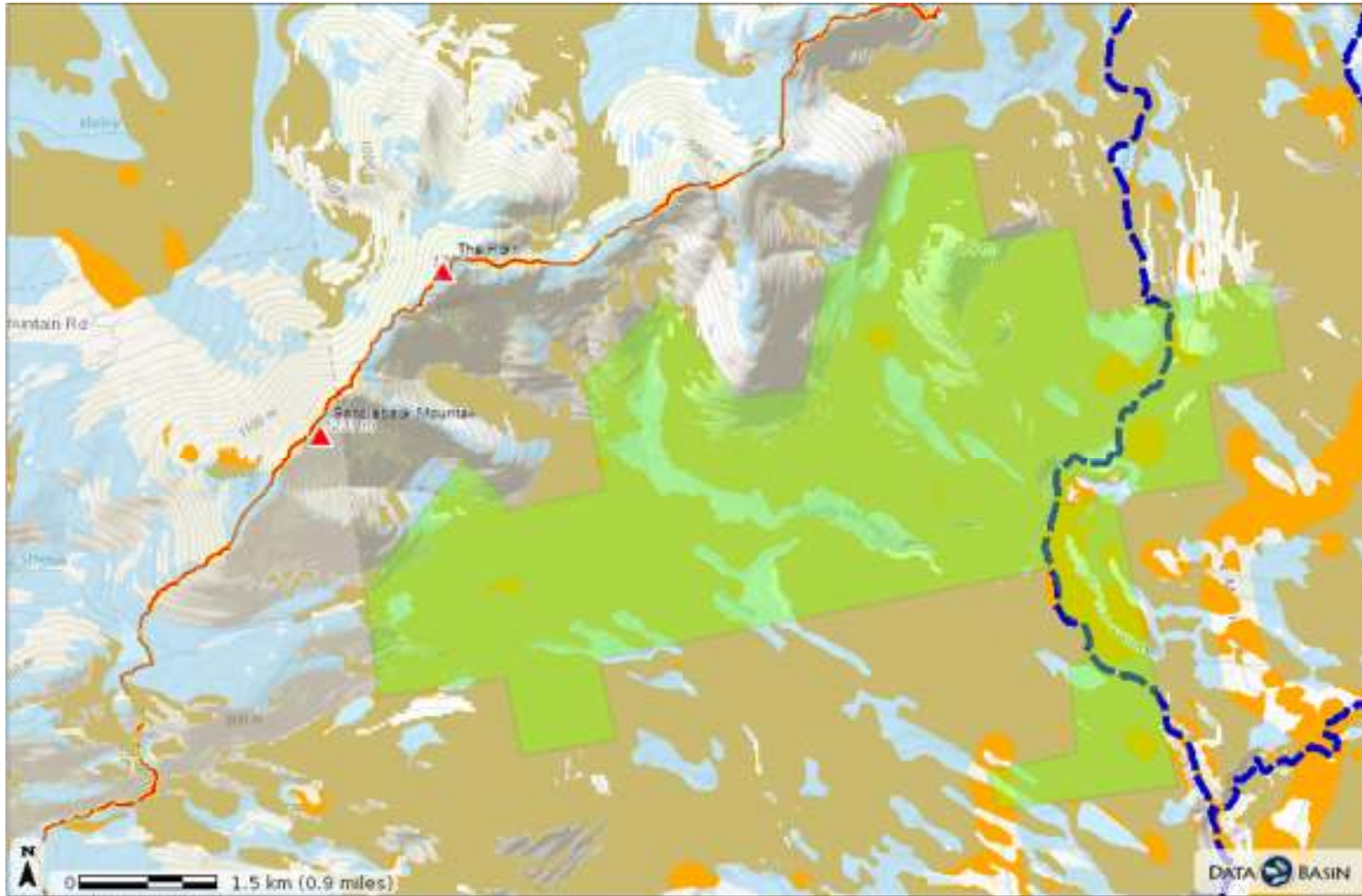
- High Productivity Forest Soils



- High Productivity Forest Soils
- Private Workable Forests



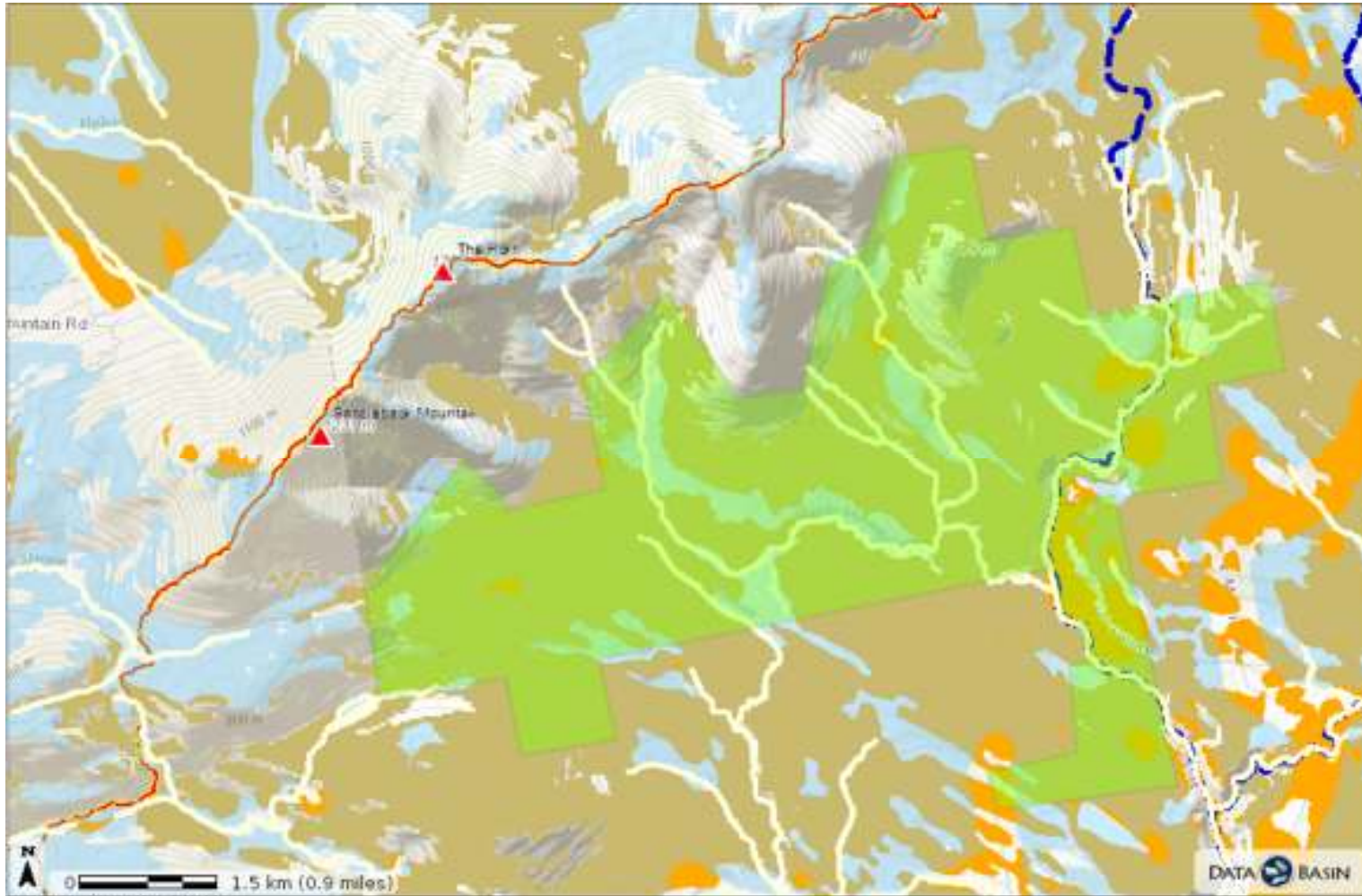
- High Productivity Forest Soils
- Private Workable Forests
- Appalachian Trail & 4,000 Ft Peaks



- High Productivity Forest Soils
- Private Workable Forests
- Appalachian Trail & 4,000 Ft Peaks
- Atlantic Salmon Habitat

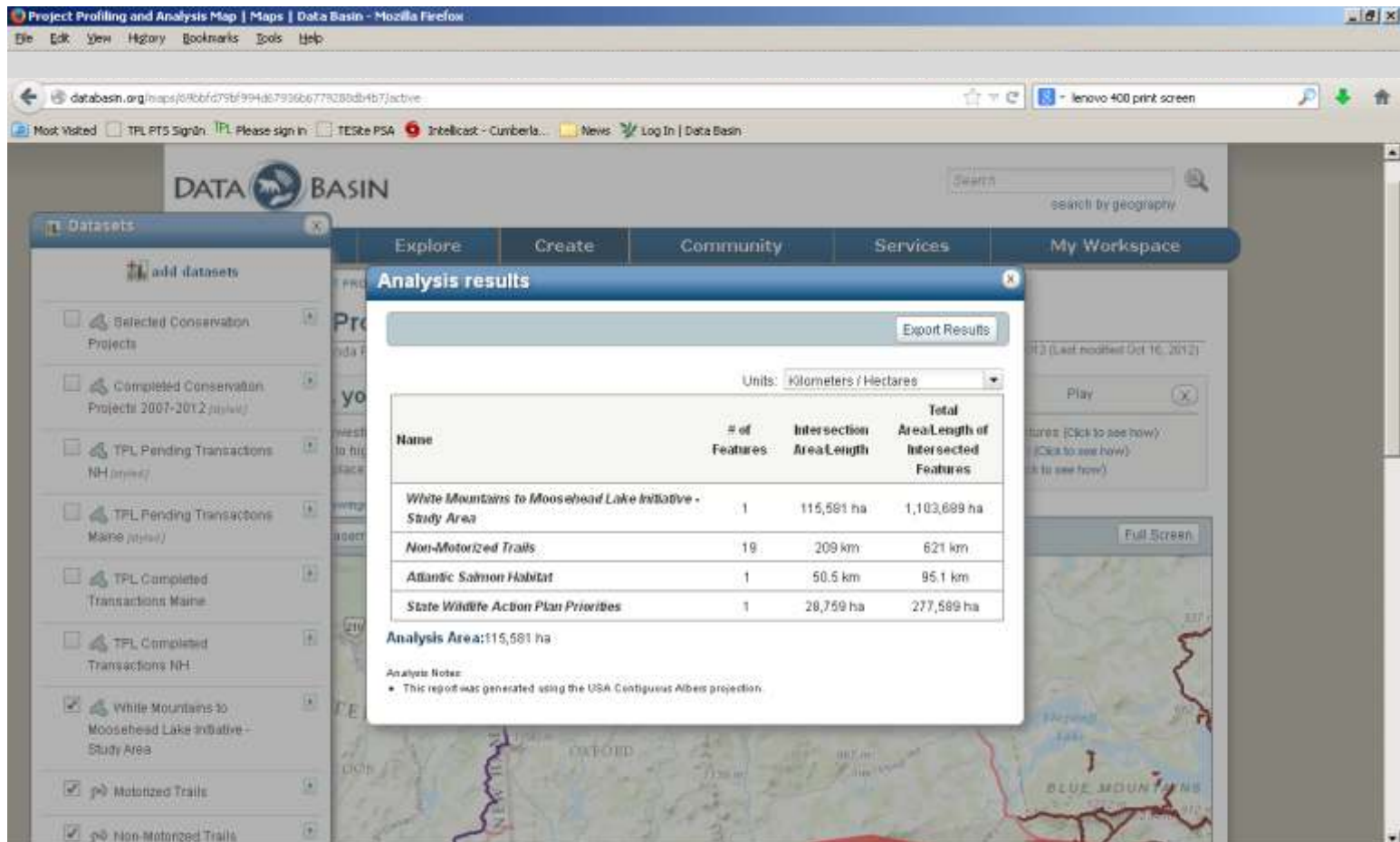


Atlantic Salmon – Orbeton Stream

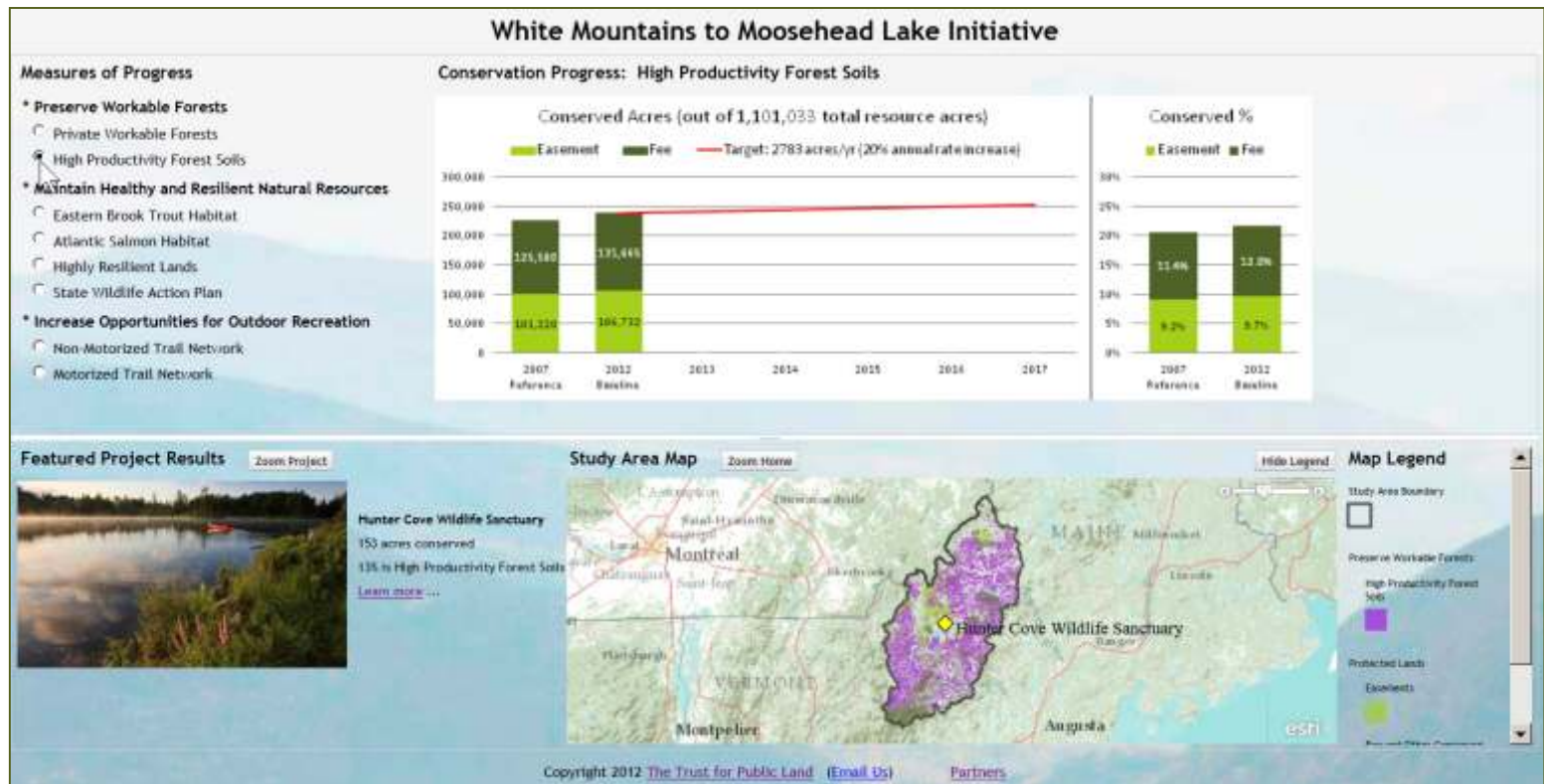


- High Productivity Forest Soils
- Private Workable Forests
- Appalachian Trail & 4,000 Ft Peaks
- Atlantic Salmon Habitat
- Eastern Brook Trout Habitat

Measures of Progress Linked to Outcomes



Measures of Progress Linked to Outcomes



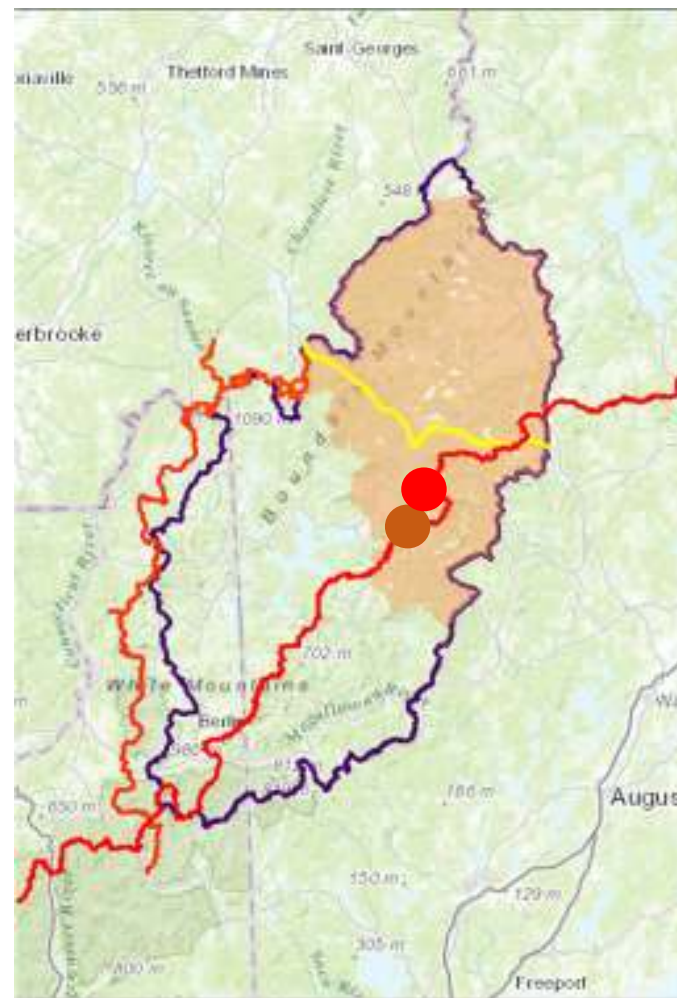
Current Projects Address Multiple Objectives



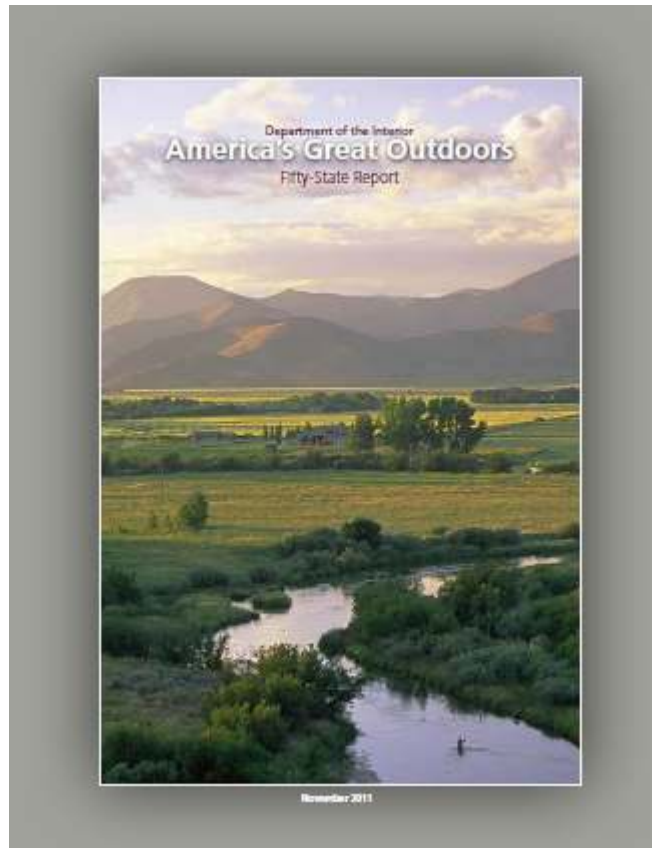
- ~50,000 Acres on Track to be Conserved in FY11 - 14
 - Extensive Bicknell's thrush habitat with numerous occupied sites
 - Highest elevation Atlantic salmon habitat in the Kennebec River drainage
- ~34,000 Acres Potentially for FY15/16
 - Brook Trout Habitat
 - Recreation
 - Working Forest

Current Projects Address Multiple Objectives

- North Atlantic Landscape Conservation Cooperative – Upper Kennebec River
- Maine Audubon – Wildlife Crossings and Fish Passage Assessment ●
- Appalachian Mountain Club & The Wilderness Society – High Elevation Habitat Resilience ●
- Kingfield-Coburn Gore – Benedict Arnold Expedition Trail



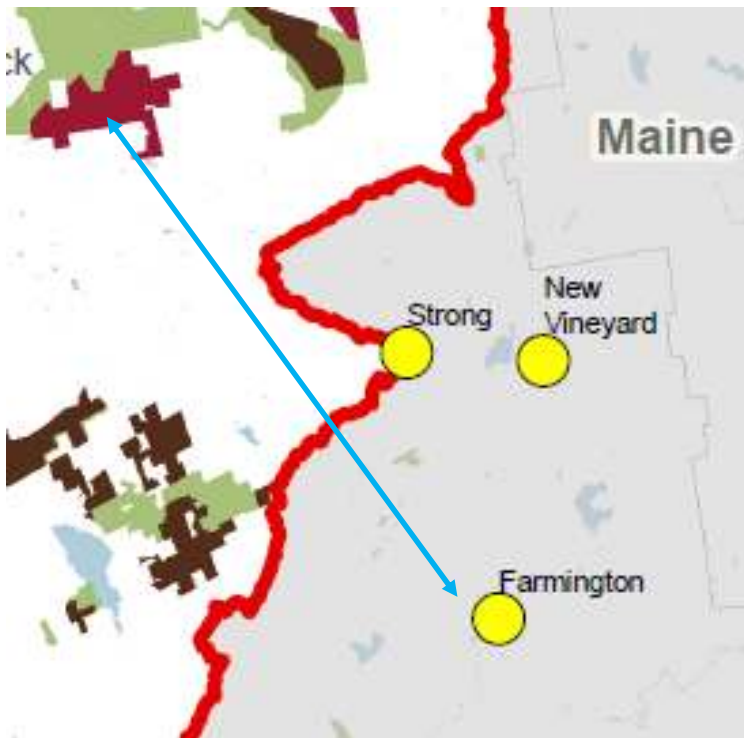
Shifting Federal Policy to the Benefit of the White Moose



AGO Helps White Moose:

- \$45.2M in Conservation Funding since 2009
- \$16M awarded to four FY12 projects totaling 35,000 acres
- USFWS has approved PPP for climate-oriented High Peaks NWR
- \$3M in new NRCS funding directed into the landscape
- Public and Private Grant Proposal Support

Delivering Outcomes with Intentionality: Wood Source – Pellet – Local Demand



- Orbeton Stream
 - Family-owned property
 - High value working forest that supplies family's pellet mill
 - Conservation easement proceeds fund mill modernization
- Northern Forest Center-led neighborhood scale pellet utilization pilot in Farmington
 - Create local demand
 - Model for wood energy success at systems level

Taking the Work to the Next Level, v1.0 to v2.0



Open Space Institute



- Use Program Integration as a Lever to do *Strategic Conservation*
- Northern Forest Investment Initiative
- Expand the Community Forest Program
- Broaden Landowner, State, and Municipal Participation
- Northern Tier Farm and Forest Jobs Accelerator
- Keeping Maine's Forests
- Private and Public Leverage Funding Opportunities



Recap

- Building on a rich legacy of work across many partners
- Bringing to bear research and GIS capacity to **prioritize and measure** our actions against strategic objectives at the landscape scale.
- Deeply **integrating investments at the project level** within and across sectors to leverage specific outcomes in climate resilience, recreation improvements, and economic development.
- **Tracking progress** across the landscape and through time.
- Positioning/seeing a **new wave of public and private funding** to the Northern Forest.



“I once more cast my line into the stream, and found the dream to be real and the fable true.”

Henry David Thoreau

Wolfe Tone
Maine State Director
wolfe.tone@tpl.org
(207) 772-7424

THE TRUST *for* PUBLIC LAND
CONSERVING LAND FOR PEOPLE