

Large Scale Conservation



Continental Connectivity

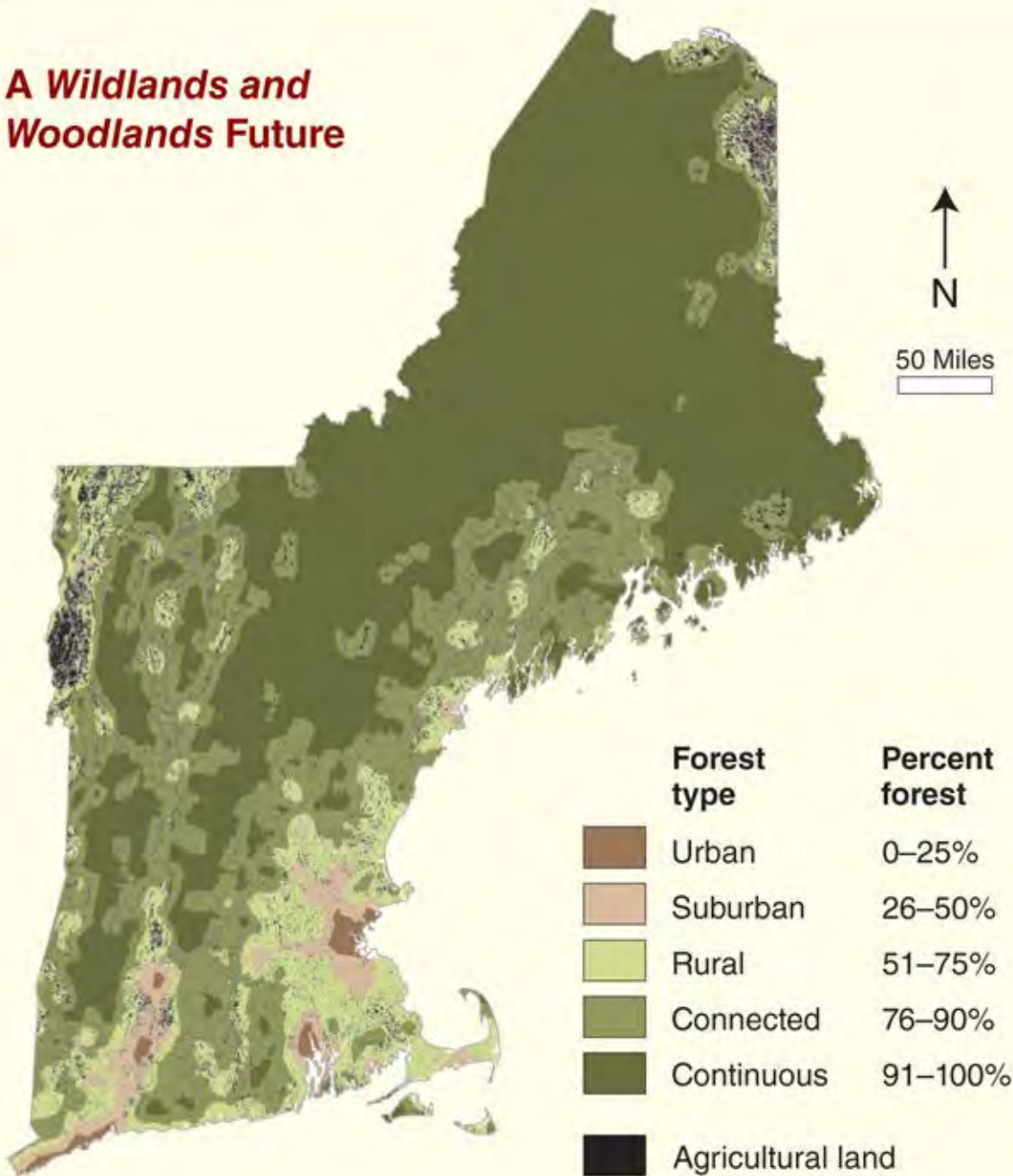
Yellowstone to Yukon

- Created to Conserve Connectivity
- 3200 km long
- 700 protected areas
- First National Parks in US and Canada
- First Peace Park
- First Natural World Heritage Site



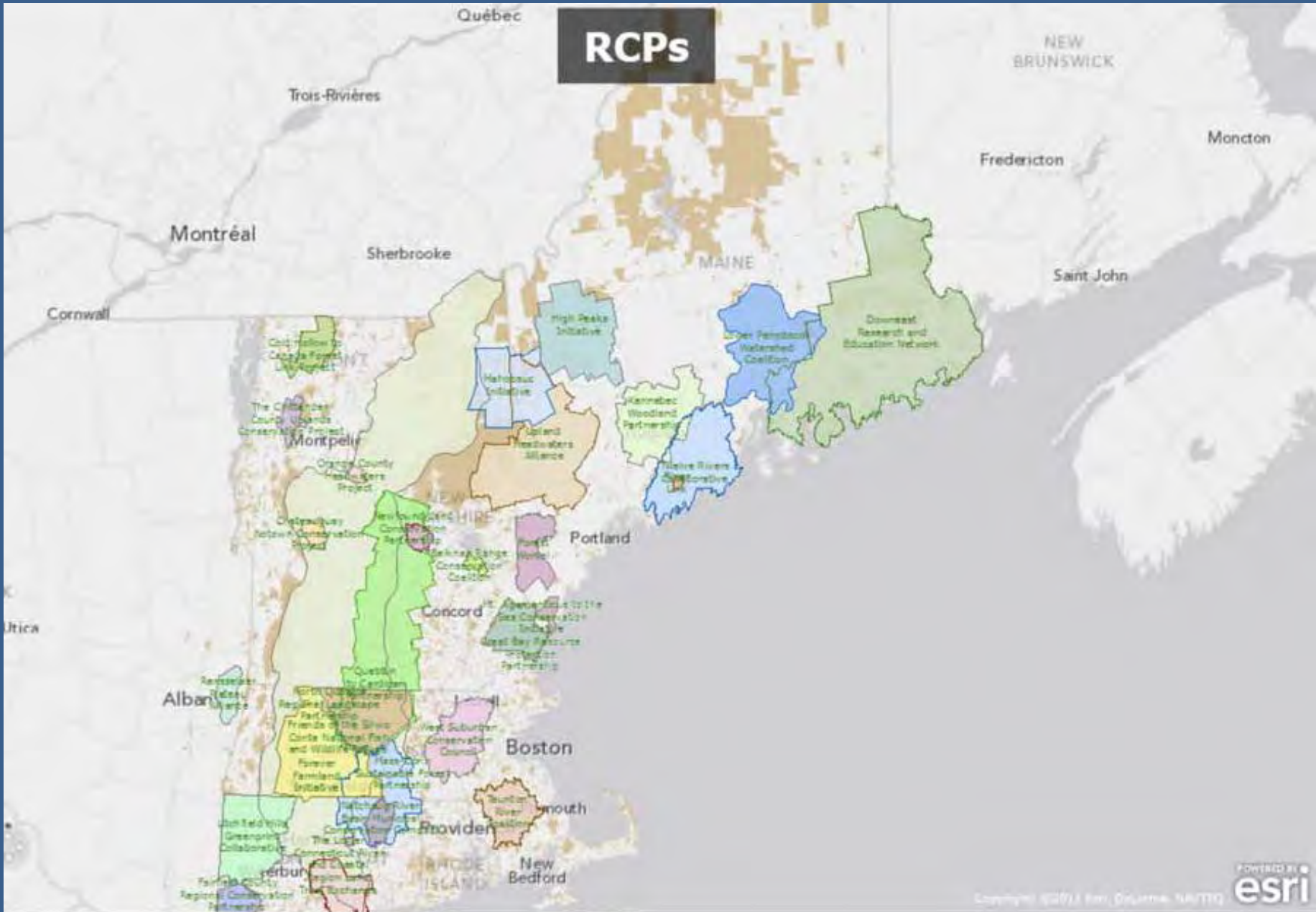
Yellowstone to Yukon
CONSERVATION INITIATIVE

A Wildlands and Woodlands Future



Conserving 70% of New England as forested and natural landscapes will require new local, state, and federal policies focused on permanent land conservation, as well as innovative new finance mechanisms and redoubled funding commitment.

RCPs





Connect the hotspots

From Alaska to Australia vast tracts of wild land are being pieced together to form conservation "megacorridors" linking existing wilderness reserves

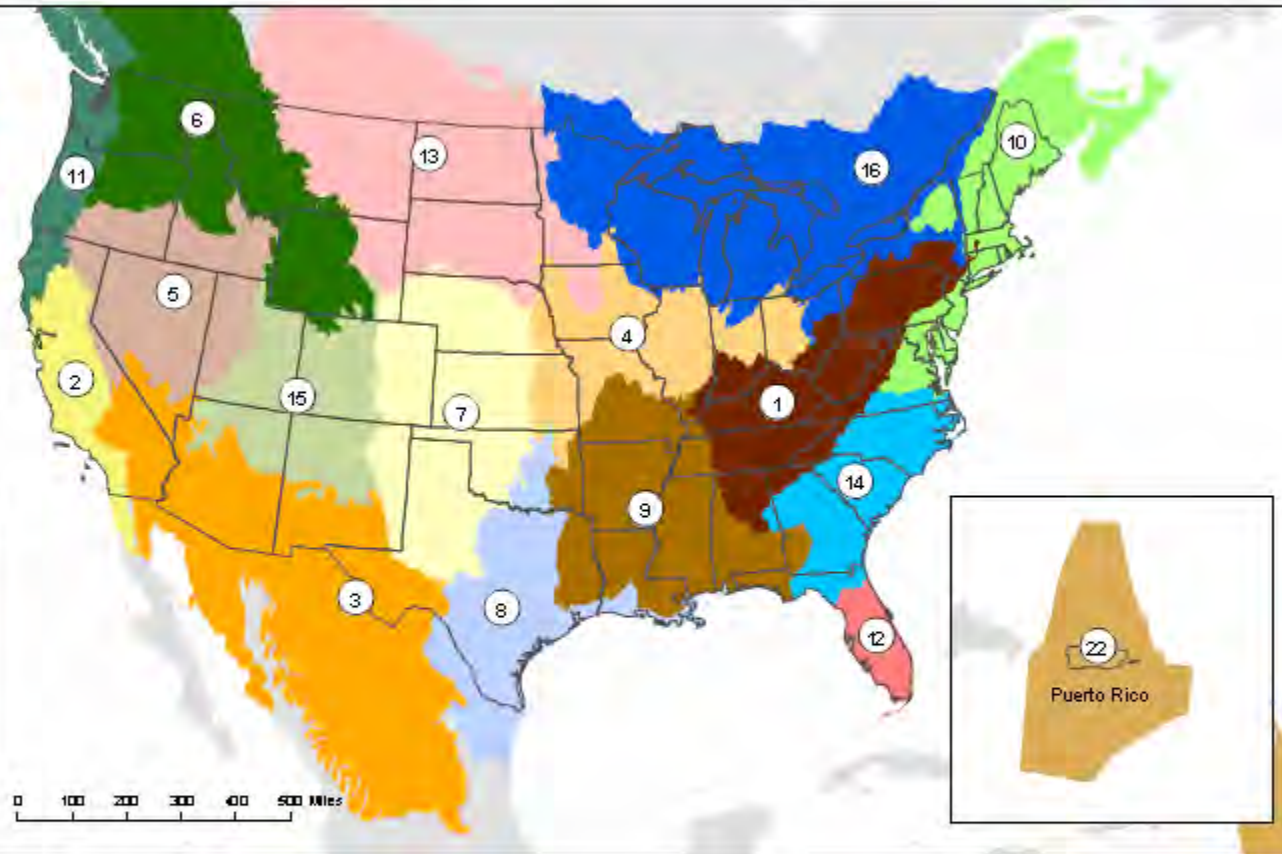
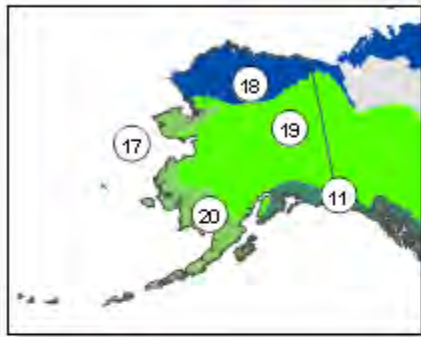


US Federal Large Landscape Initiatives

- White House - America's Great Outdoors
- White House - Climate Adaptation Strategy
- Dept of Interior – Landscape Conservation Cooperative
- Bureau Land Management – Healthy Lands Initiative
- National Parks Service - Consolidated Natural Resources Initiative
- Dept of Agriculture – All Lands Initiative
- Dept of Defense – Sentinel Landscapes
- Environmental Protection Agency – Ecological Networks



Landscape Conservation Cooperatives

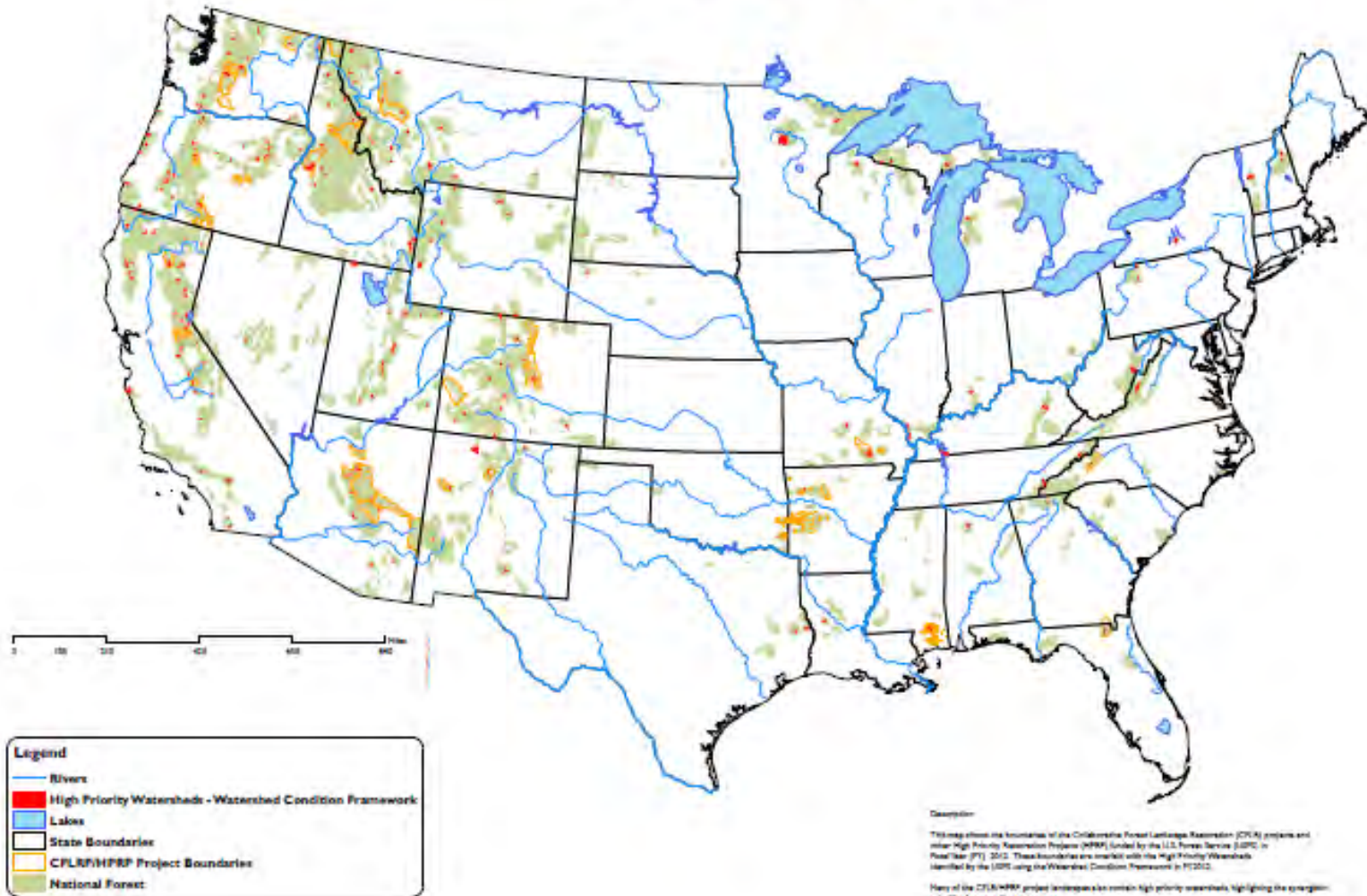


Landscape Conservation Cooperatives

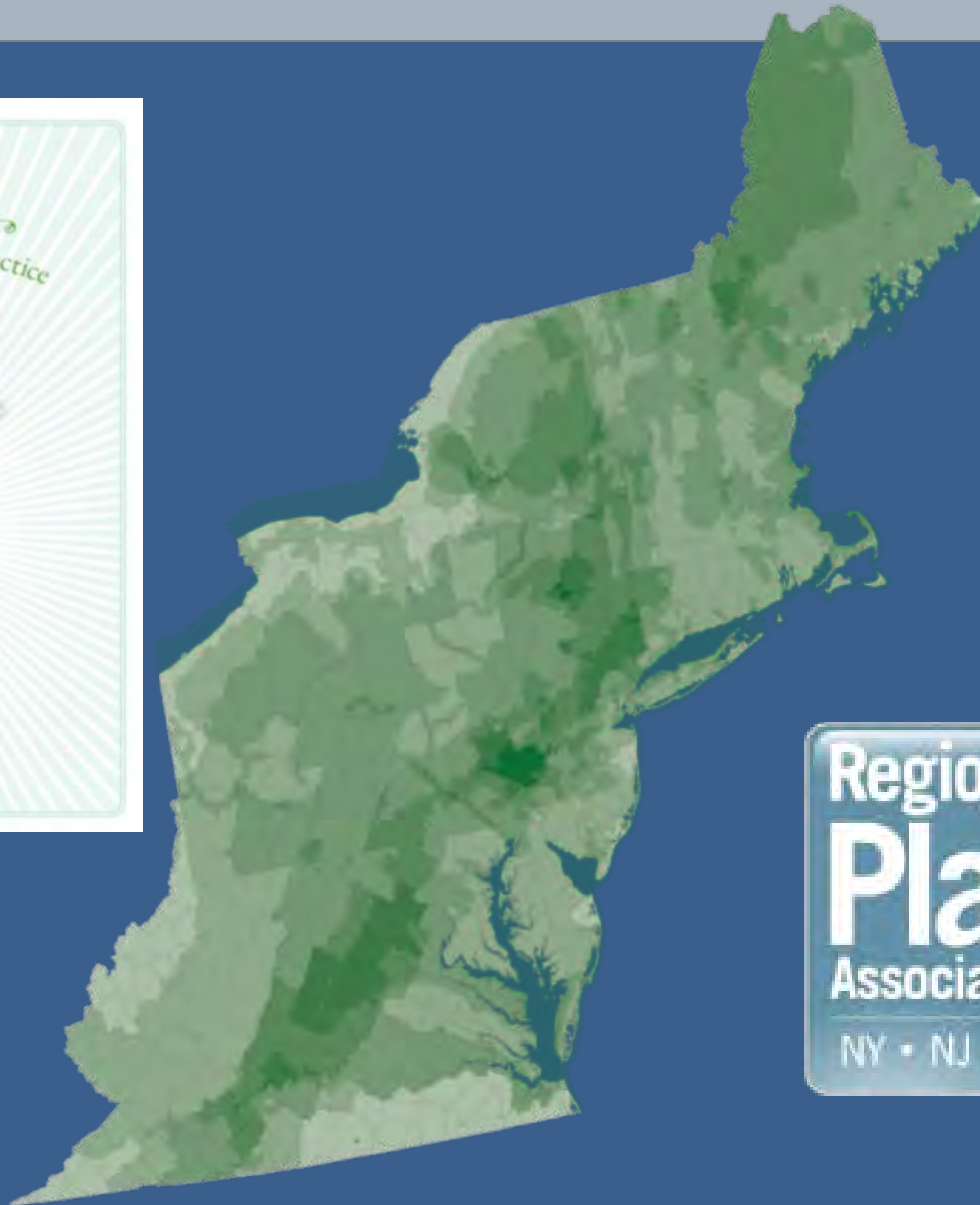
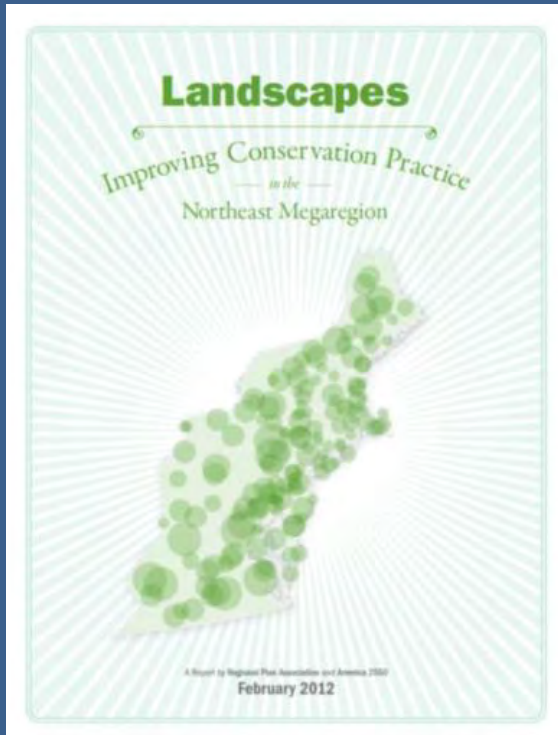
- | | | | |
|---|-----------------------------------|-------------------------------------|----------------------------------|
| 1. Appalachian | 7. Great Plains | 13. Plains and Prairie Potholes | 19. Northwestern Interior Forest |
| 2. California | 8. Gulf Coast Prairie | 14. South Atlantic | 20. Western Alaska |
| 3. Desert | 9. Gulf Coastal Plains and Ozarks | 15. Southern Rockies | 21. Pacific Islands |
| 4. Eastern Tallgrass Prairie and Big Rivers | 10. North Atlantic | 16. Upper Midwest and Great Lakes | 22. Caribbean |
| 5. Great Basin | 11. North Pacific | 17. Aleutian and Bering Sea Islands | Unclassified |
| 6. Great Northern | 12. Peninsular Florida | 18. Arctic | |

CFLRPs

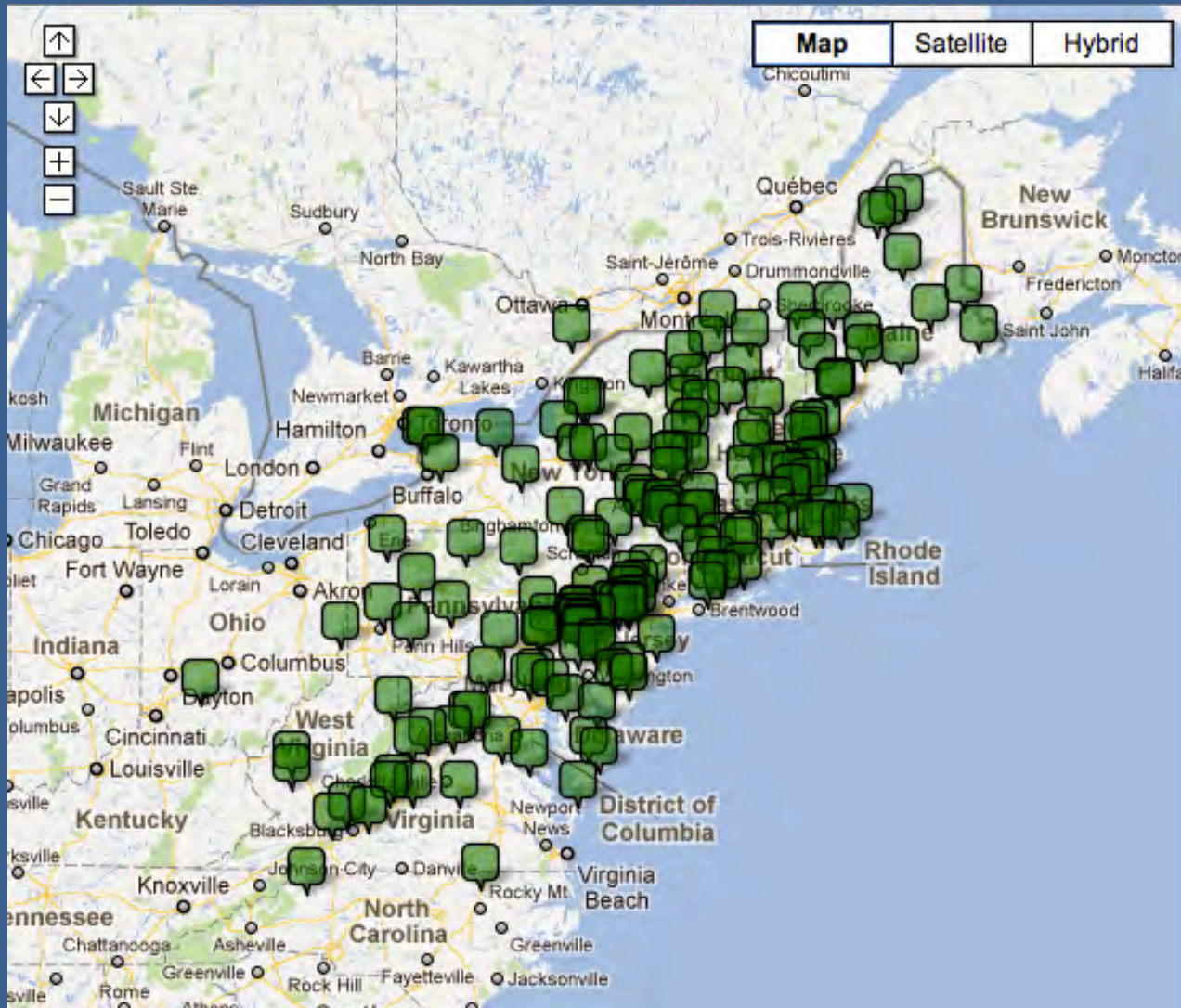
Collaborative Forest Landscape Restoration and High Priority Restoration Project Boundaries Overlaid with High Priority Watersheds



Where are they located?



Large Landscape Conservation in the 13 Northeast States



Source: *Regional Plan Association / America 2050*

Figure 10: **Large Landscape Conservation Initiatives in the Rocky Mountain West**
(locations are approximate)



Large Landscape Conservation in the Rocky Mountain West

AN INVENTORY AND STATUS REPORT

Prepared by
Matthew McKinney
Shawn Johnson

Center for Natural Resources
& Environmental Policy
The University of Montana

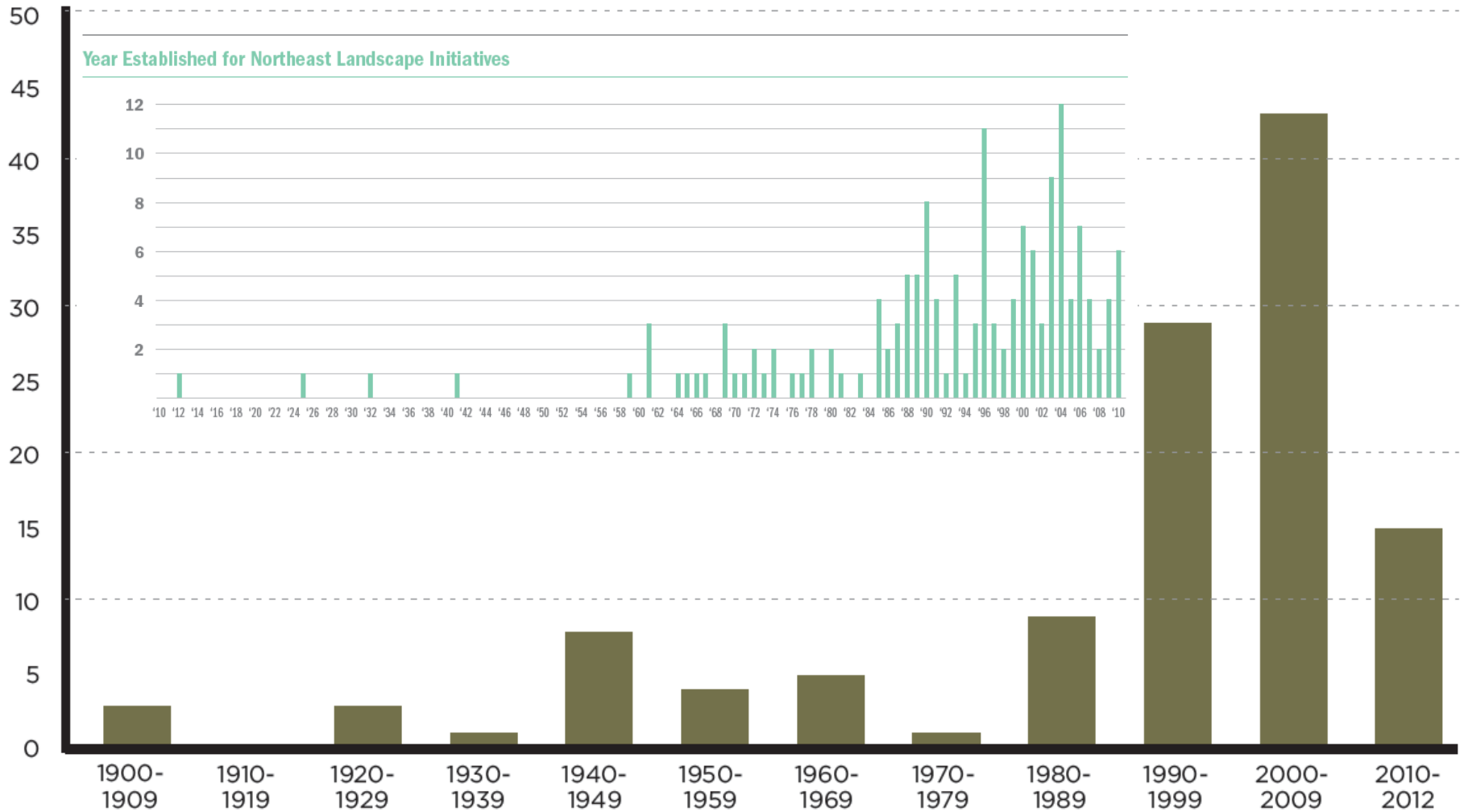
For The Practitioners' Network for
Large Landscape Conservation

The University of
Montana

Center for Natural Resources
and Environmental Policy

Source

Year Established



Source: Center for Natural Resources & Environmental Policy

Who is Leading?

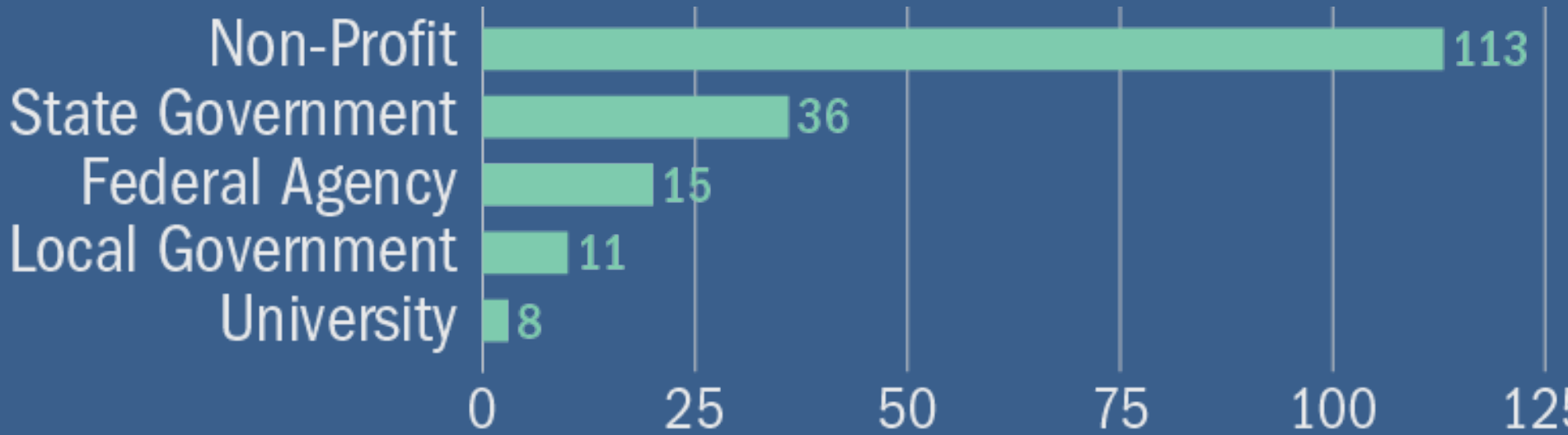
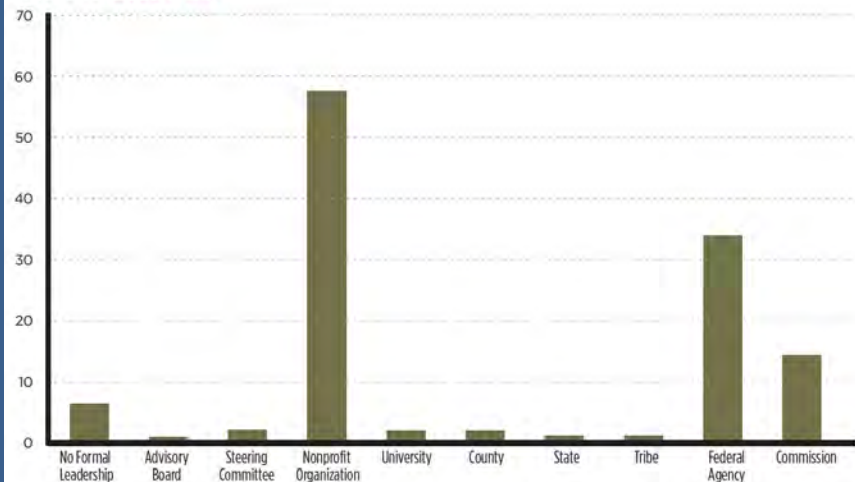
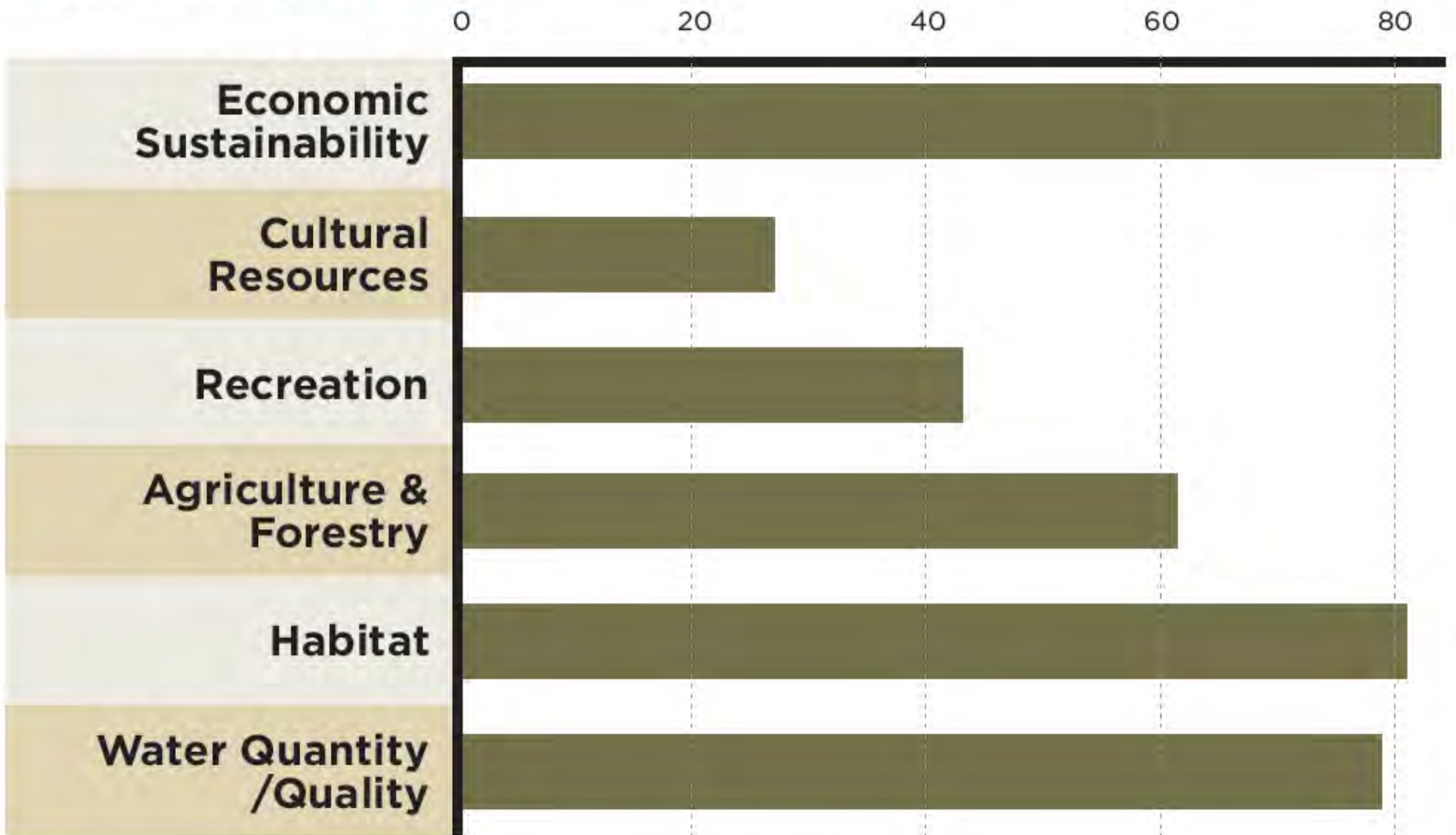


Figure 18: Leadership



Source: Center for Natural Resources & Environmental Policy

Figure 13: **Objectives**



Source: Center for Natural Resources & Environmental Policy

Figure 14: **Continuum of Governance Models**

Working Across Boundaries

Continuum of Governance Models

NETWORKS

PARTNERSHIPS

INSTITUTIONS



build relationships

exchange information

identify common interests

coordinate existing institutions

negotiate compacts

create intermediary organization¹

create regulatory agencies

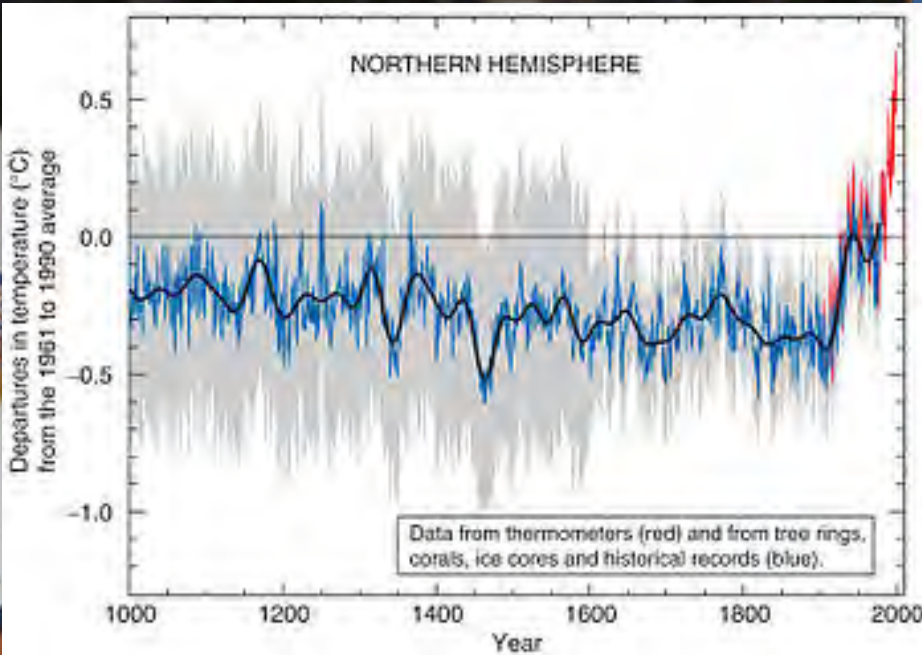
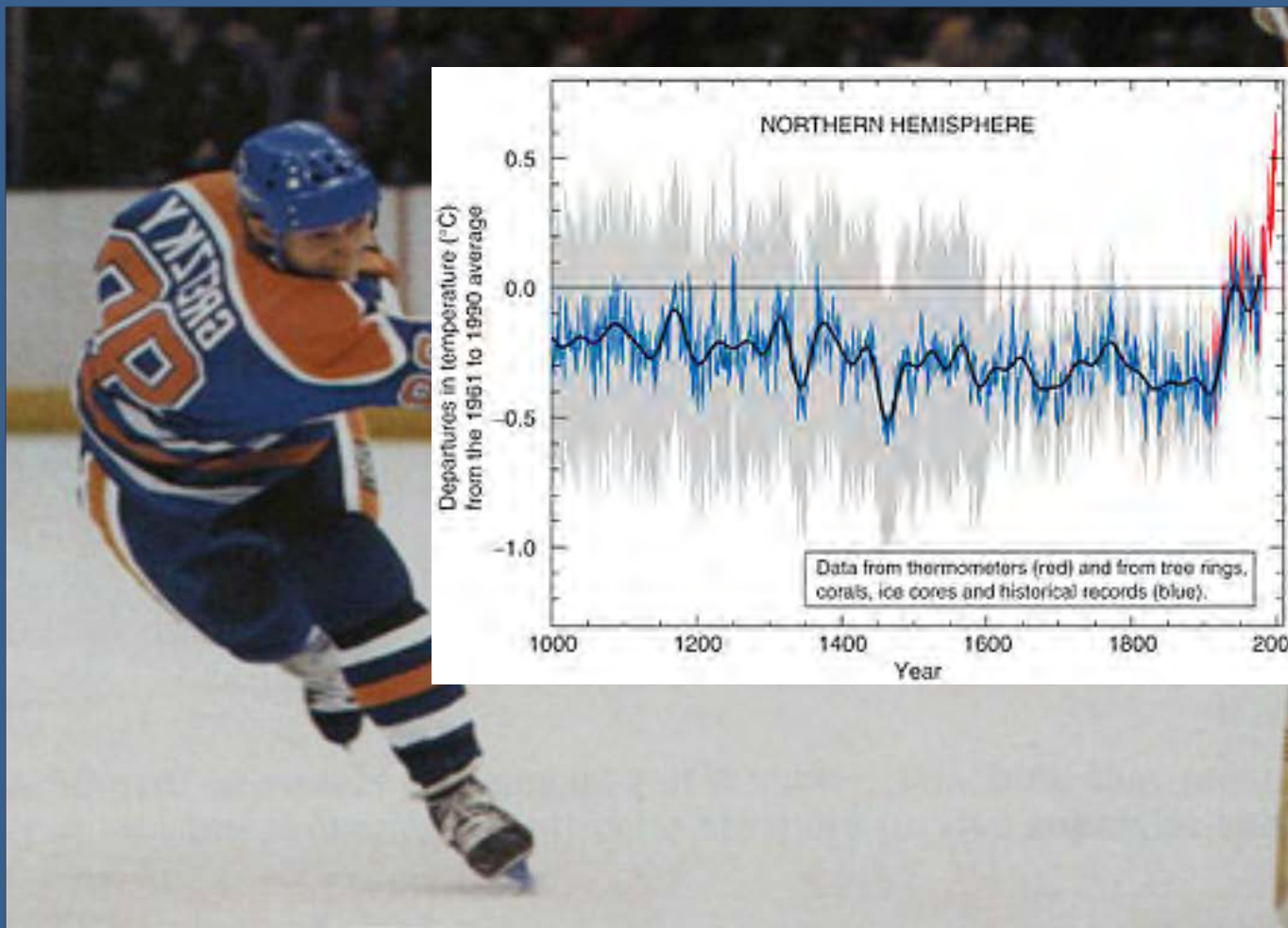
¹Intermediary organization: an agent who acts as a link between parties

©2012, Center for Natural Resources & Environmental Policy

The Great One's Response:
Some people skate to the puck, I *skate to
where the puck is going to be.*

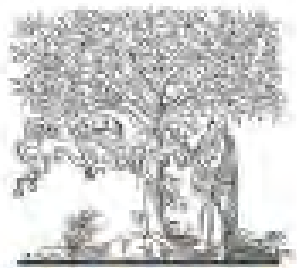
Wayne Gretzky





So how will species respond?





ELSEVIER

available at www.sciencedirect.com



journal homepage: www.elsevier.com/locate/biocon



Review

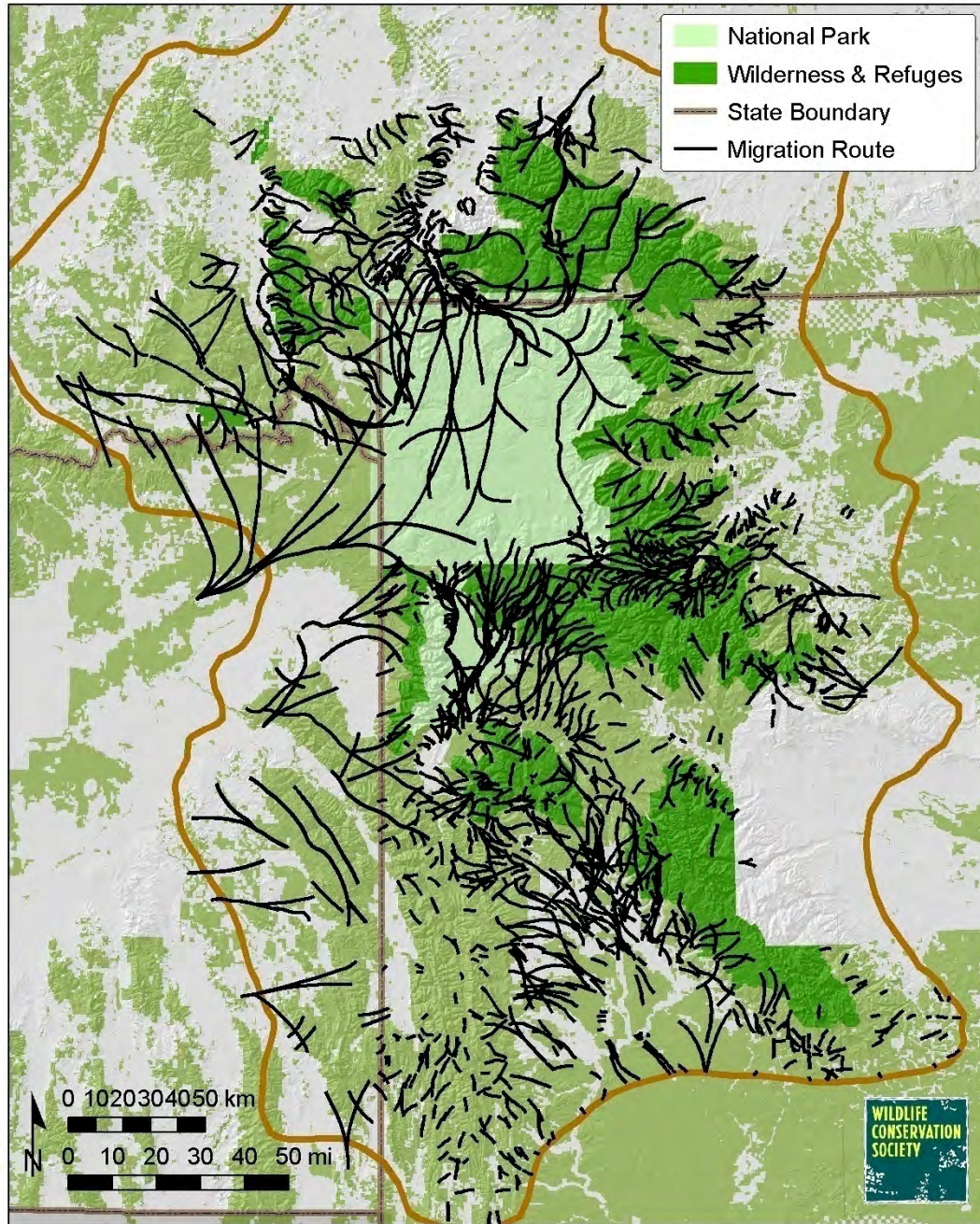
Biodiversity management in the face of climate change: A review of 22 years of recommendations

Nicole E. Heller^{*}, Erika S. Zavaleta

Environmental Studies Department, University of California, Santa Cruz, Santa Cruz, CA 95606, United States

#1 Recommendation: Increase Connectivity

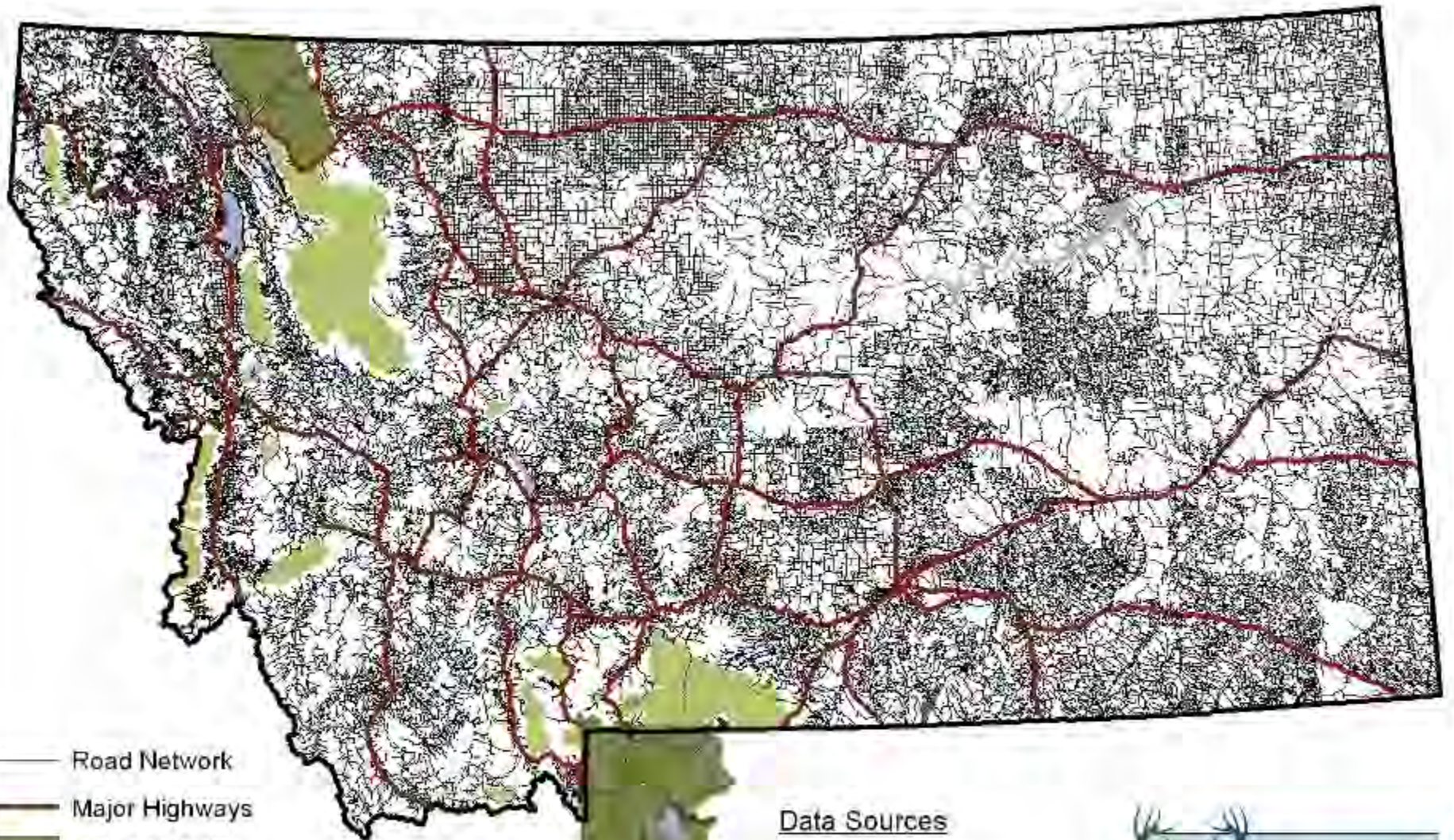
UNGULATE MIGRATION ROUTES IN GREATER YELLOWSTONE





Photos: G Tabor





- Road Network
- Major Highways
- National Parks
- Wilderness Areas
- Major Water Bodies

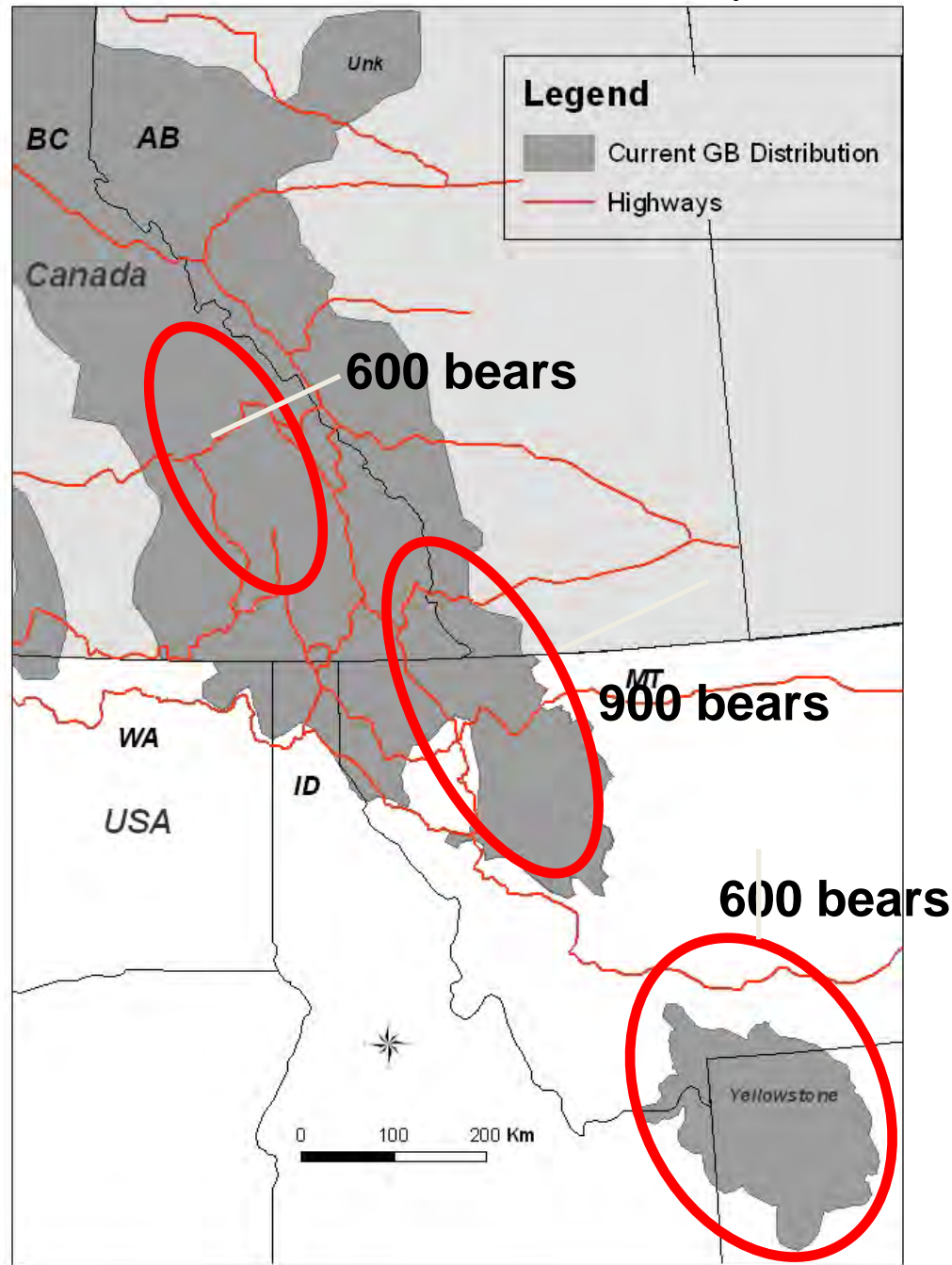
Data Sources

TIGER/Line data,
U.S. Census Bureau
Montana National
Heritage Program (MTNHP)



CENTER FOR LARGE LANDSCAPE OBSERVATION

One Road can have continental consequences



Courtesy
Michael Proctor





Photo: Joe Riis




Photo: Wendy Shattil & Bob Rozinski /SI



Three Mule deer approach a border fence in the San Pedro Riparian National Conservation Area southeast of Tucson.

Photo by Anonymous



“We spend \$8 Billion dollars a year running over wildlife. If we took that cost and quartered it, we could build 200 animal crossings a year, and the problem of roadkill would disappear within a generation.”

—Ted Zoli, structural engineer



Policy Approaches that Enable Conservation Action



Western Governors Association Wildlife Corridor Initiative

