

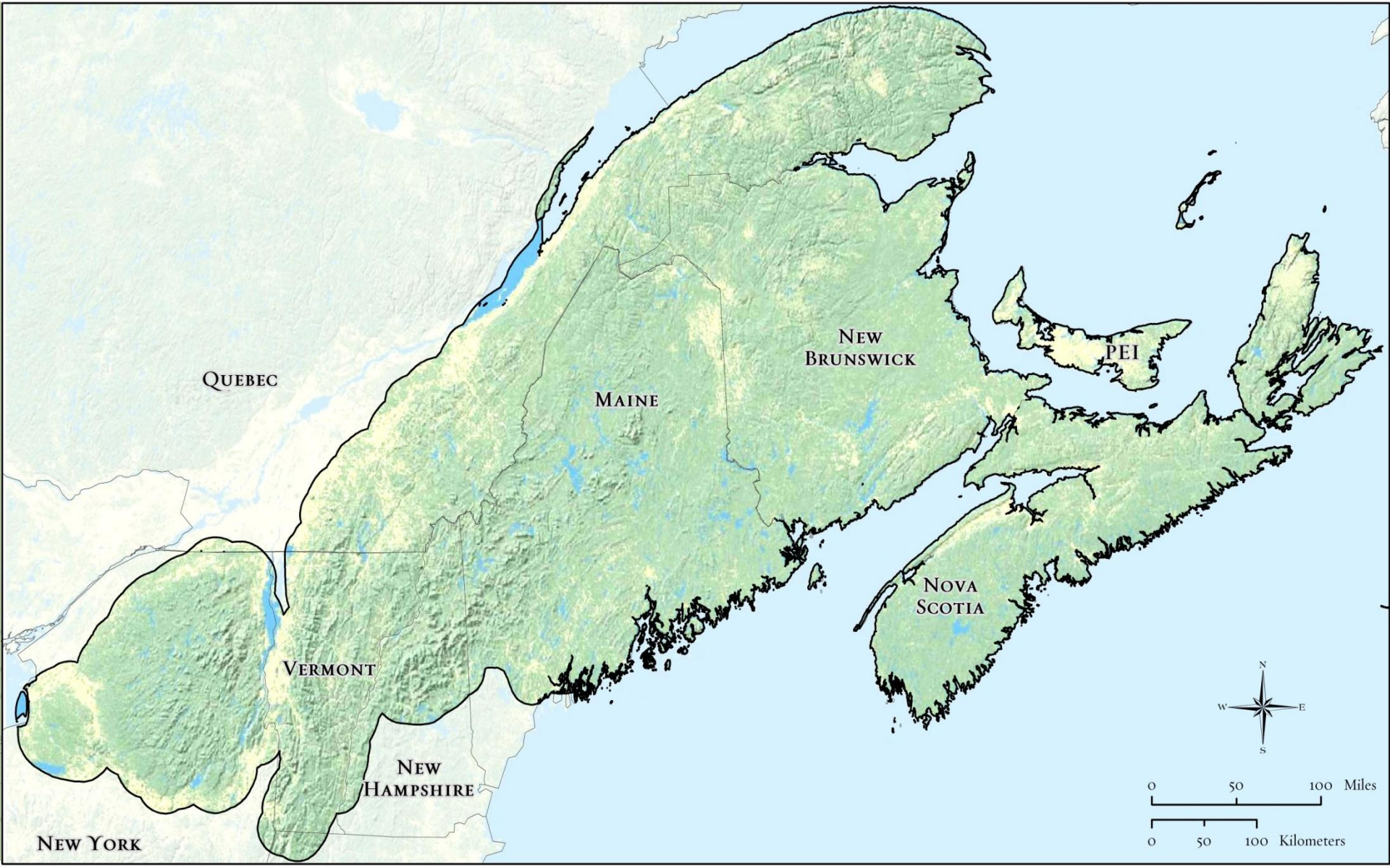


*A New Landscape-Scale Conservation Partnership
To Sustain Habitat Connections*



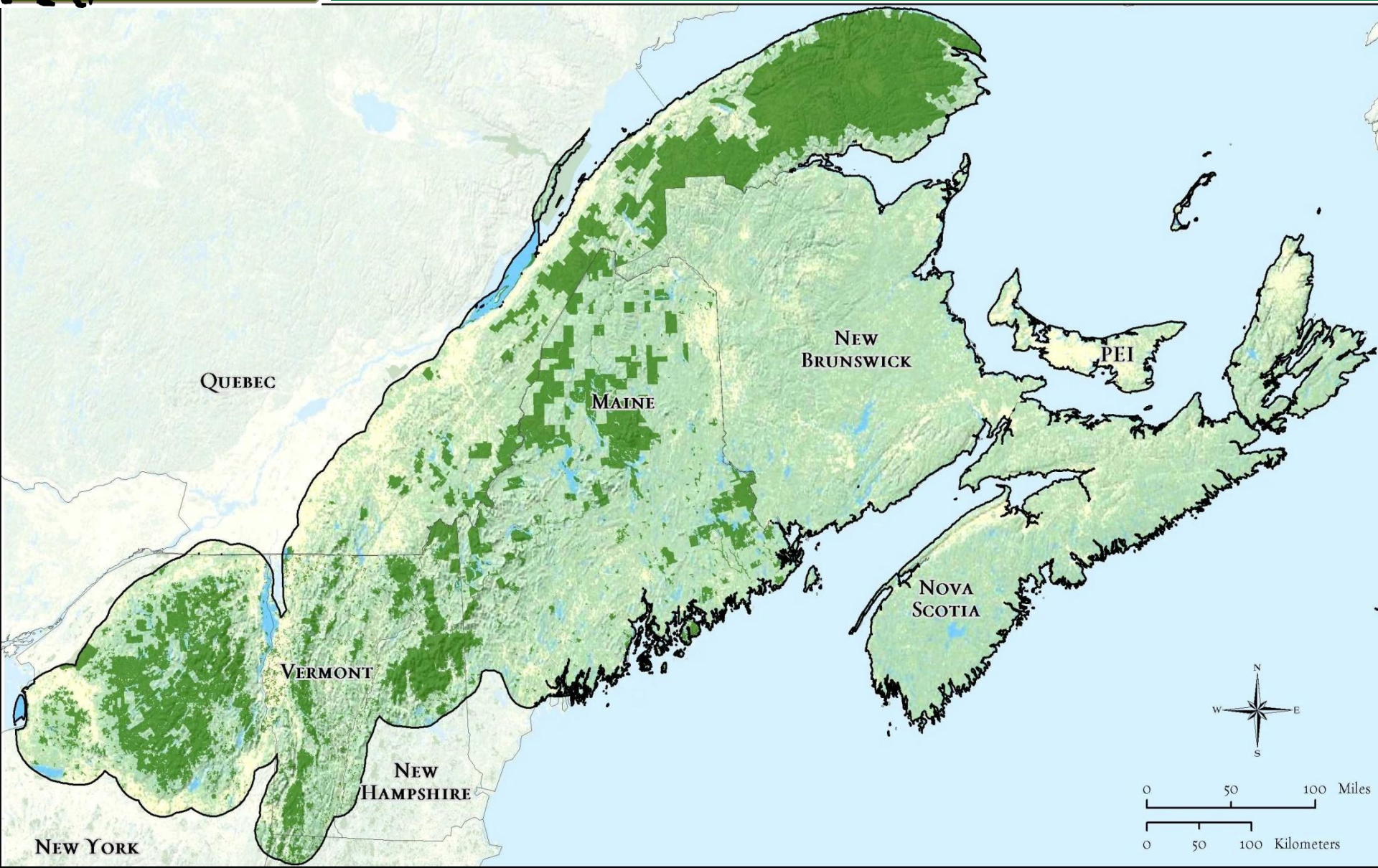


The Northern Appalachian Ecoregion





Conserved Lands in the Northern Apps





How to Tackle the Challenge of Landscape Connectivity at this Scale?

- Rely on partnerships and collaboration
- Identify priority areas to focus on
- Develop a multi-pronged, strategic approach
- Find funding to make it possible
- Learn and adapt





A Big Circle of Partners – Essential for Success at this Scale

Maine Audubon

**Maine Department of Inland
Fisheries & Wildlife**

**Maine Department of
Transportation**

National Wildlife Federation

New Hampshire Audubon

**New Hampshire Department
of Transportation**

**New Hampshire Fish & Game
Department**

**New York Department of
Environmental Conservation**

**New York Department of
Transportation**

Northeast Wilderness Trust

**The Nature Conservancy
(ME, NH, NY/ADK, VT)**

Trust for Public Land

Tug Hill Commission

Tug Hill Tomorrow

Two Countries, One Forest

**Vermont Agency of
Transportation**

**Vermont Department of Fish
& Wildlife**

Vermont Land Trust

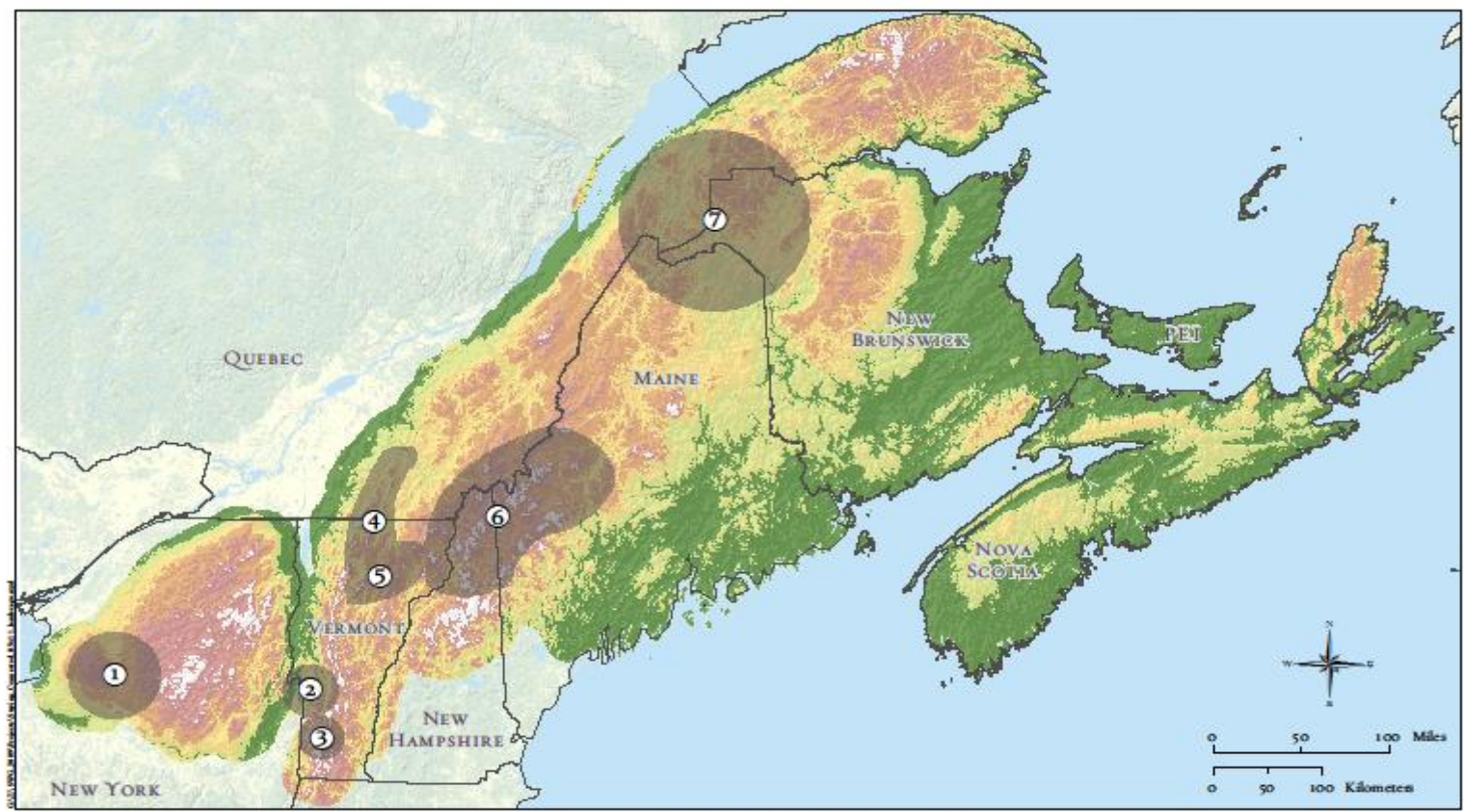
**Vermont Natural Resources
Council**

Wildlands Network



Wildlife Conservation Society

Identifying Key Focal Areas







STAYING CONNECTED IN THE NORTHERN APPALACHIANS HIGH PRIORITY LINKAGE AREAS



LEGEND

-  High Priority Linkage
-  State/Province Boundary

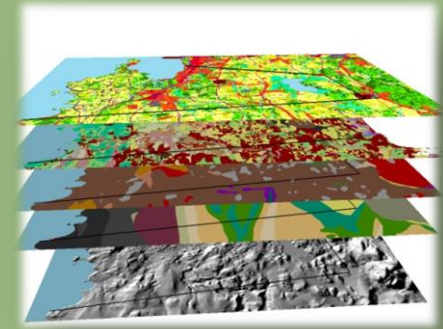
Elevation Class (feet)

-  0 - 400
-  400 - 700
-  700 - 1,100
-  1,100 - 1,600
-  1,600 - 2,400
-  2,400 - 6,296

- HIGH PRIORITY LINKAGES**
- ① TUG HILL PLATEAU ↔ ADIRONDACK MOUNTAINS (NY)
 - ② ADIRONDACK MOUNTAINS ↔ GREEN MOUNTAINS (NY/VT)
 - ③ TACONIC MOUNTAINS ↔ SOUTHERN GREEN MOUNTAINS (NY/VT)
 - ④ NORTHERN GREEN MOUNTAINS (VT/CANADA)
 - ⑤ WORCESTER RANGE ↔ NORTHEAST KINGDOM (VT)
 - ⑥ NORTHEAST KINGDOM ↔ NORTHERN NH ↔ WESTERN ME MOUNTAINS (VT/NH/ME)
 - ⑦ MAINE'S NORTH WOODS ↔ QUEBEC'S GASPE PENINSULA (ME/CANADA)

Within-Linkage Strategies:

- Conservation science
- Targeted land protection
- Technical assistance to local communities and organizations
- Increase the permeability of key roads



Cross-Cutting Strategies:

- Model easement standards and language
- Technical assistance materials, tools, and support systems
- Road ecology guidelines and BMPs
- Measures framework for connectivity
- Landscape connectivity conference





Conservation Science – Green Mountains to Adirondacks Linkage

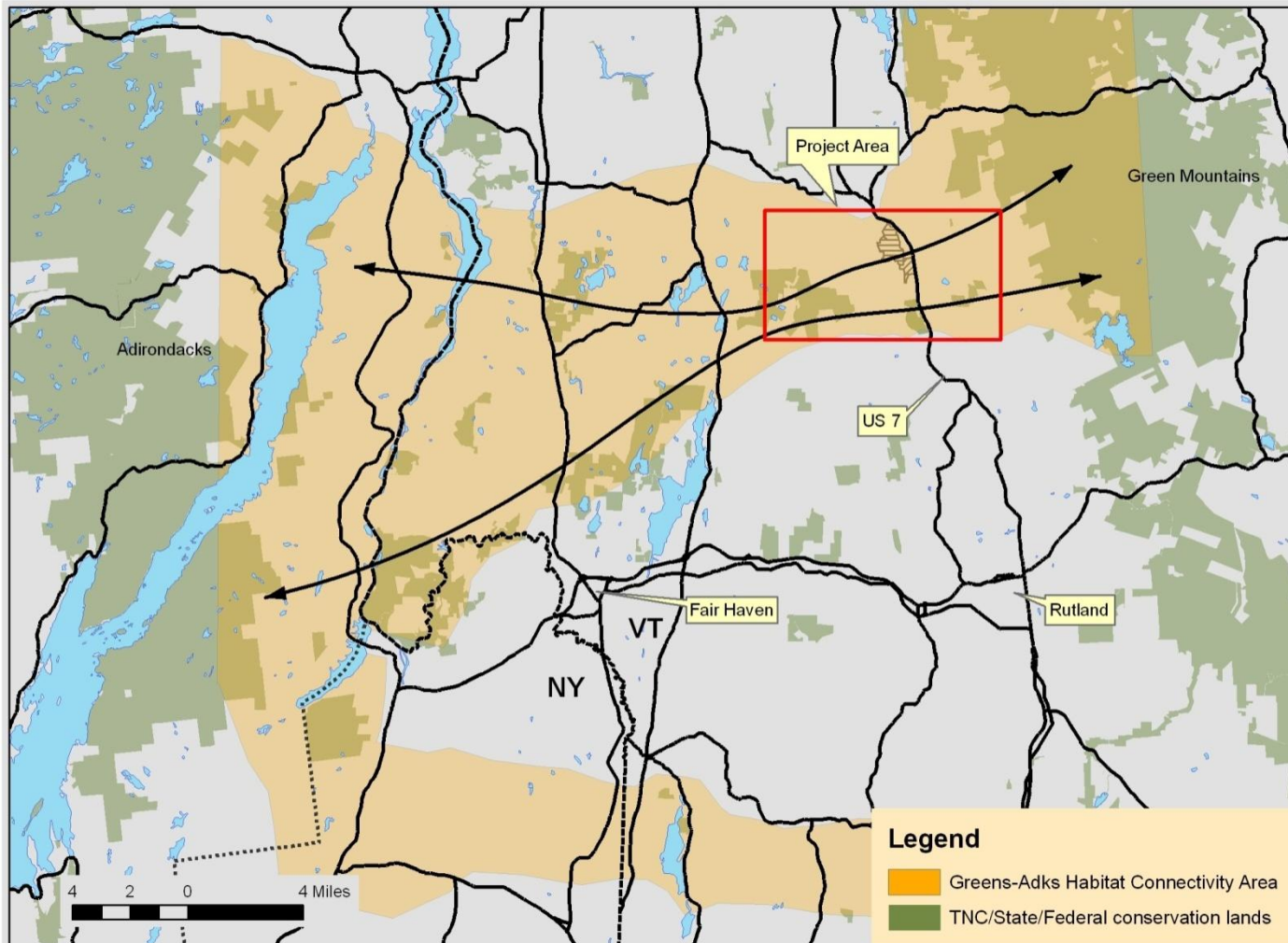
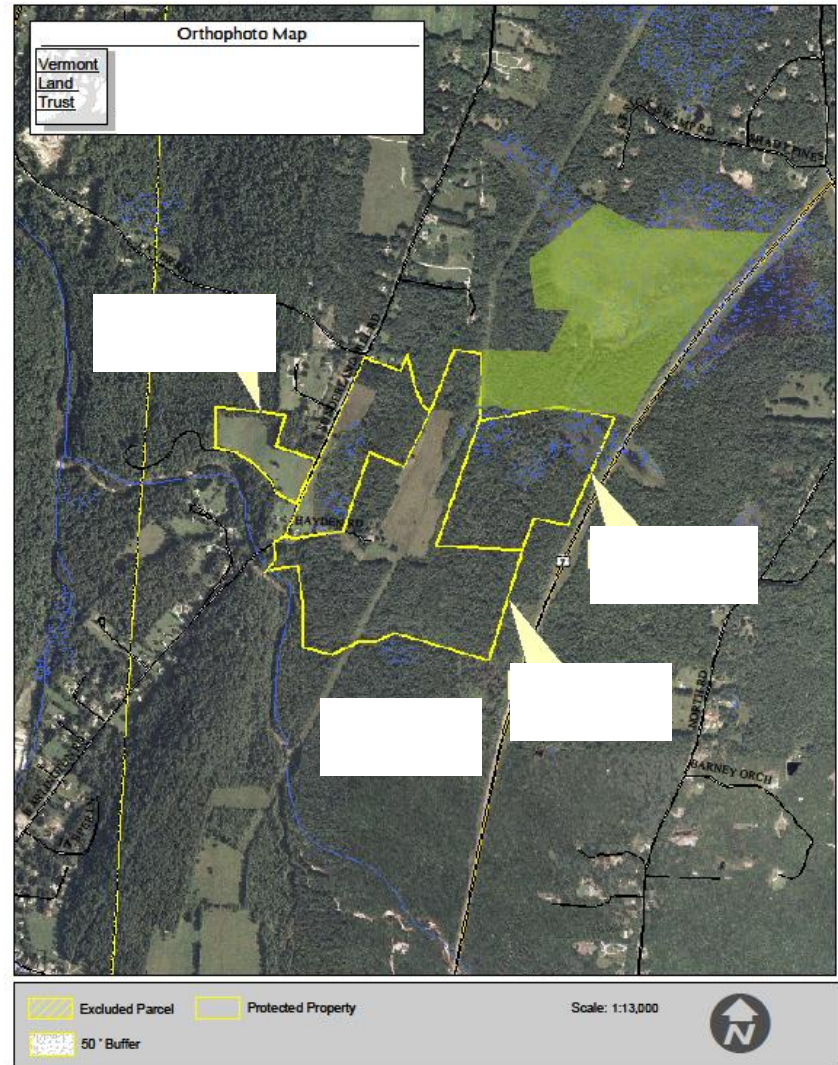
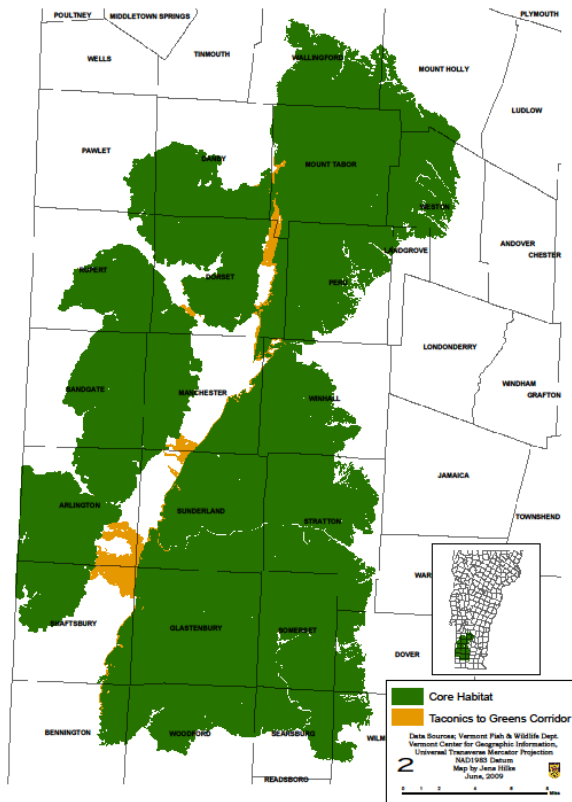


Figure 1: Depiction of the project area within the Green Mountains to Adirondacks habitat linkage, as derived from GIS habitat connectivity modeling.



Strategic Land Protection – Taconics to Green Mountains Linkage

TACONIC MTNS TO SOUTHERN GREEN MTNS WILDLIFE CORRIDOR





Building Local Engagement – Northern Green Mountains Linkage



Connections

The newsletter of Cold Hollow to Canada Forest Link Fall 2010

Connectivity—One Town at a Time

Greetings friends. In this second edition of our quarterly newsletter we're happy to report a new partner in our work to keep our region's forests healthy. Vermont Natural Resources Council (VNRC), in partnership with Cold Hollow to Canada (CHC) and the Staying

with different opportunities and challenges in their own community—to discuss town values related to wildlife. VNRC can then provide the technical assistance skills necessary to identify and draft land use and zoning strategies and non-regulatory approaches that will help



Photo by Corinne Reising

Connected Initiative, will utilize a grant from the Davis Conservation Foundation to lend their town planning expertise to our region. VNRC will work with interested towns in our seven-town project area to help shape planning and zoning strategies to maintain habitat connectivity and honor each town's unique values. The CHC region is recognized as a critical linkage of wildlife habitat within the larger Northern Appalachian Ecoregion that stretches from New York to Maine and Canada.

protect the resources the town identifies as important. These may be enhancements to town zoning and subdivision regulations, such as wildlife overlay districts and specific development review standards. CHC also hopes to use our experiences gained through this collaboration to develop a land use planning manual for the communities in our area.

This is an exciting opportunity to forge new ground in community-based planning for conservation, and we're pleased to have VNRC on board as a partner.

Over the next year, CHC and VNRC plan to meet with local planning commissions or other municipal groups—each faced

Enjoy our newsletter.

Charlie Hancock, CHC chair

Inside this issue:

- Teaming Up for 2
the Forest
- Slow Down & 3
See the Moss
- Conservation 4
in Fairbough
- Habitat Rec- 5
ommendations
- Upcoming 6
Events

Special points of interest:

- If you'd like to be more involved with CHC, consider representing your town on our Steering Committee
- If you'd like more information or to be added to our email list, please email us at info@coldhollowto-canada.org

Edits by Dorothy Allard
Edits and layout by Corrie Miller

COME EXPLORE MAMMAL PELTS, SKULLS, and MOUNTS

TUESDAY, OCTOBER 19th @ 6:30 PM

Join Us in the International Room at Jay Peak Resort

Featuring: Sue Morse of Keeping Track, a nationally-renowned tracker and photographer

FREE ADMISSION!

Photo © Susan C. Morse

THE NIGHT WILL FEATURE:

- Extensive Wildlife Exhibits including mammal mounts, track-molds, pelts, skulls and more!
- A Slide Show with stunning wildlife photography by Sue Morse
- The Opportunity to sign up to learn tracking skills and form a Northern Greens Tracking Team.

“ Sue is a wonderful storyteller, and the way she is able to transport you into her world of bobcats, bear, coyote, and other friends is nothing short of magic...”

-Stephen J. Holmes

Sponsored by *Cold Hollow to Canada* and the *Staying Connected Initiative*

For more information, contact Bob Hawk (Robert.L.Hawk@gmail.com; 802-533-9803) or visit www.coldhollowtoCanada.org

- Special thanks to Jay Peak Resort for graciously hosting this event -



The People Part – Strengthening community connections to the land and celebrating PLACE





Assistance to Local Communities

Education & Outreach

Incentive Programs

Town Plan

Conservation Easements

Open Space Plan

SEQR

Local land-use laws

Subdivision

Non-Regulatory

Regulatory

A range of options - no single tool is right for every situation





Increasing Road Permeability





What's Making It All Possible?

- Competitive SWG from USFWS – 1 of only 12 nationally in 1st round (2009)
- Matching grant from WCS – Wildlife Action Opportunities Fund (Doris Duke Charitable Foundation)
- Additional small grants – e.g., Davis Foundation
- \$500K+ match from Staying Connected partners





Thanks!

Questions?

Contacts:

Phil Huffman
TNC – VT
phuffman@tnc.org

Mark Zankel
TNC – NH
mzankel@tnc.org

Conrad Reining
Wildlands Network
conrad@wildlandsnetwork.org

Stayingconnectedinitiative.org