

MAINE FUTURES COMMUNITY MAPPER



- Forestry and Conservation
- Agriculture and Conservation
- Development Without Conflicts

Scenarios

- 2006 Conditions (Reference)
- Continued Current Conditions

Adjust layer transparency

Summarize Download Compare

- A1
- A2
- B1
- B2

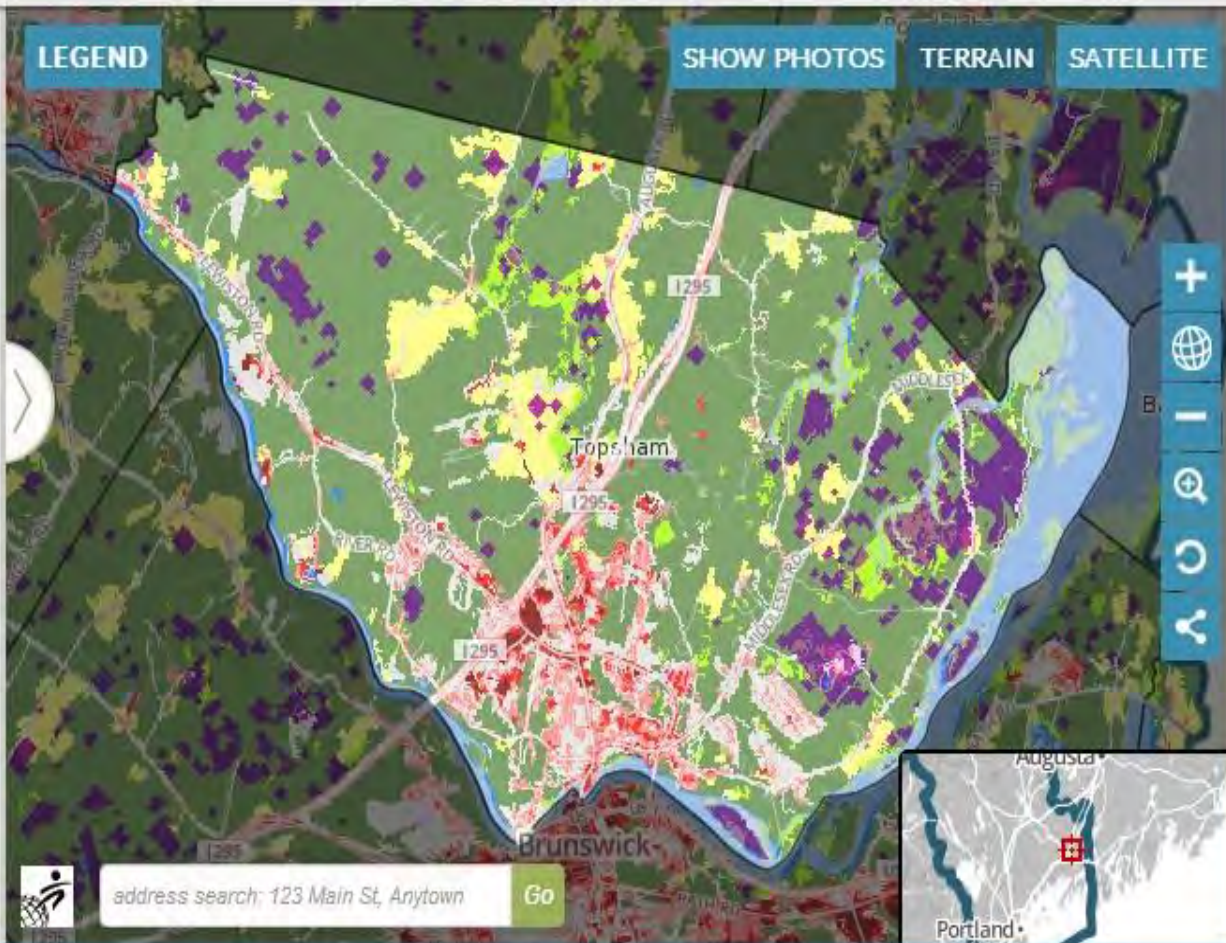
Compare and Display Data Layers

Suggested Comparisons to Explore

(select)

LEGEND

SHOW PHOTOS TERRAIN SATELLITE



address search: 123 Main St, Anytown Go

MAINE FUTURES COMMUNITY MAPPER



- Forestry and Conservation
- Agriculture and Conservation
- Development Without Conflicts

Scenarios

- 2006 Conditions (Reference)
- Continued Current Conditions
- A1
- A2
- B1
- B2

Adjust layer transparency

Summarize Download Compare

Compare and Display Data Layers

Suggested Comparisons to Explore

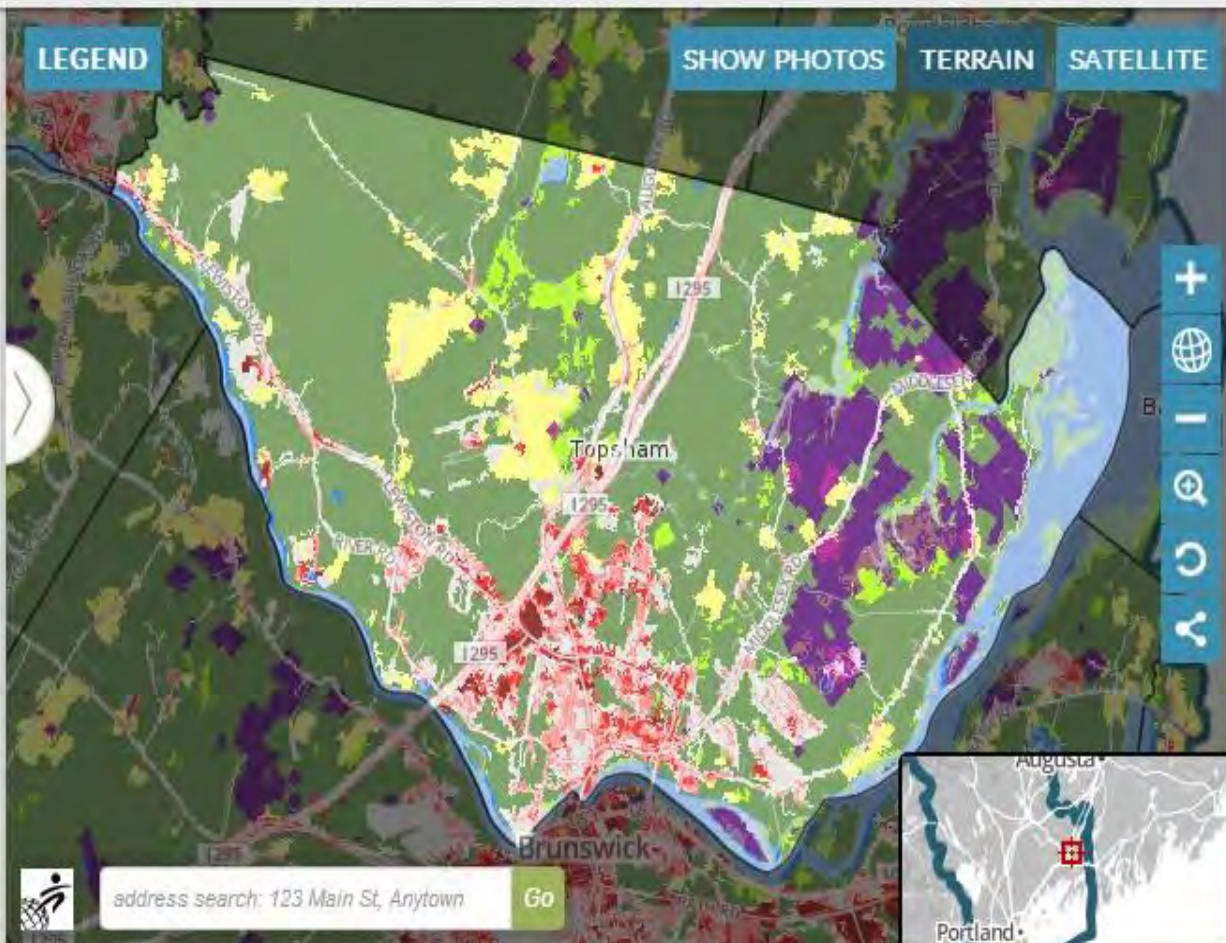
(select)

LEGEND

SHOW PHOTOS

TERRAIN

SATELLITE



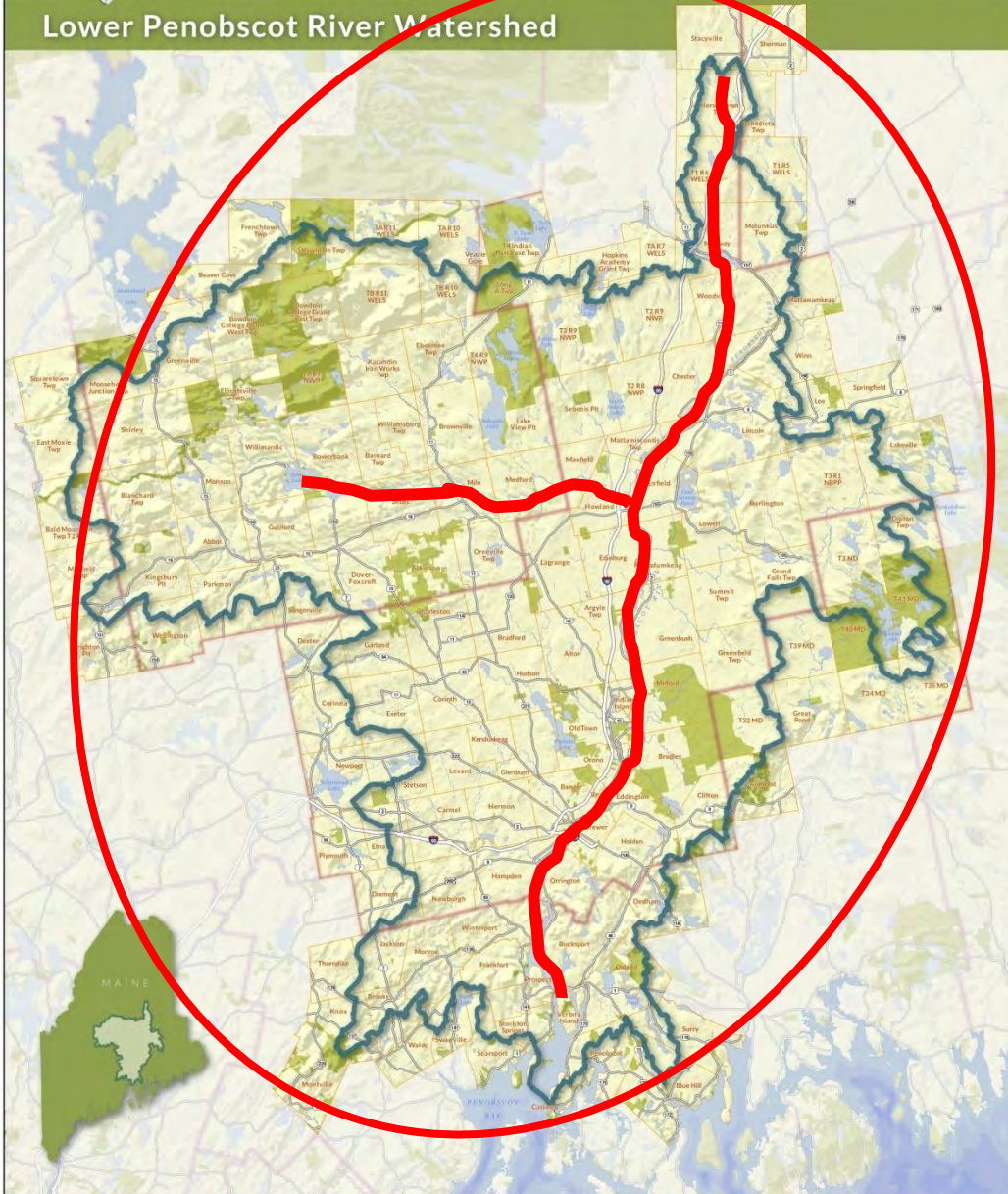
address search: 123 Main St, Anytown Go

Students as Conservation Catalysts





Lower Penobscot River Watershed

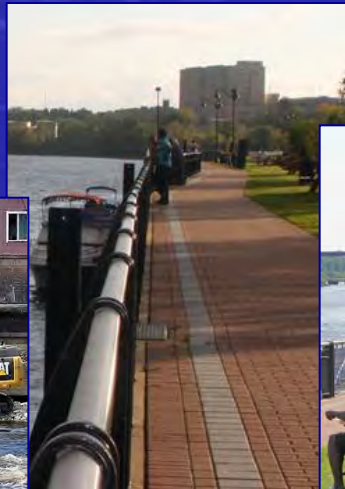


SSI Alternative Futures team was studying land use & the terrestrial landscape...

PRRT has been restoring the river & its tributaries...

The Penobscot River Greenway "Bay-to-Baxter" Initiative...

- Link Maine's vibrant coastal tourism with key recreational assets located in the interior...
 - *Penobscot River Restoration & Dam Removal*
 - *Baxter State Park & the Appalachian Trail*
 - *Katahdin Gateway National Park*
- **Dual Mission...**
 - *Economic development*
 - *Leverage quality-of-place*



Upward Bound & Bay-to-Baxter...

- Place-based research
- Service learning
- Citizen science

- 1: MFCM App
- 2: Penobscot Oral Histories
- 3: Tourism Marketing



Lessons Learned

- Academia represents a huge & largely untapped resource that can link research, students, communities & RCPs in efforts to meet shared goals:
 - *Conserving natural resources & quality-of-place*
 - *Fostering student & community engagement*
 - *Service learning, place-based research, citizen science*
- *Institutional Capacity*
(*faculty, students, funding, alumni*)
 - *150-year-old Land Grant mission*
 - *Wildlands & Woodlands as a model*
 - *Scenarios, Society & Services*

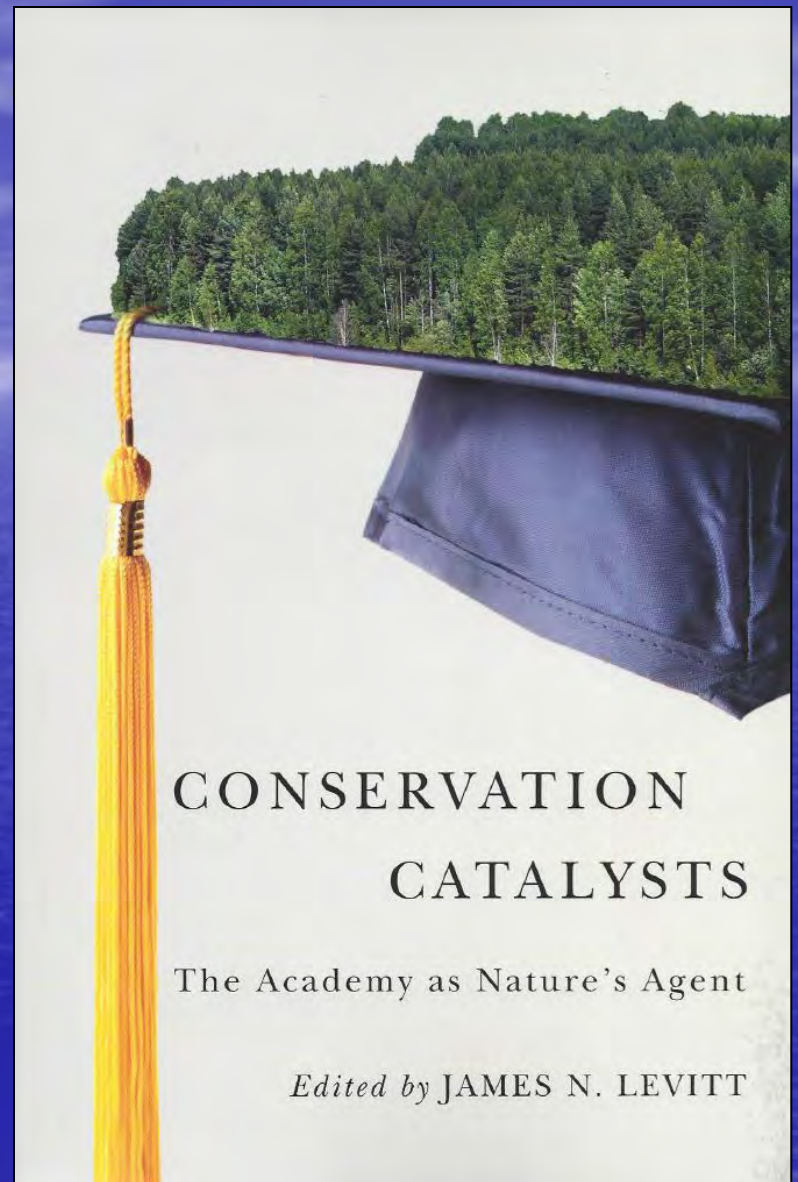


ALPiNE's Next Steps

- Task 1: Inventory & map conservation assets and activities across New England
- Task 2: Connect educators & students to RCPs
- Task 3: Institutionalize conservation on-campus
- Task 4: Foster RCP-related student organizations
- Task 5: Establish metrics to track impacts & outcomes
- Task 6: Foster the creation of additional networks in the U.S. & abroad...



Conservation Catalysts...



Your Homework Assignment

- Task 1: Assess academic institutions in your area
- Task 2: Identify key personnel & programs
- Task 3: Connect, collaborate & conserve!



OUR TEAM

The Maine Futures Community Mapper was developed by a partnership between the University of Maine, the Center for Community GIS, and over 75 Maine citizens, planners, conservationists, business leaders, foresters, farmers, and scientists.

Research Team



[Spencer Meyer](#), (Project Leader) University of Maine, Center for Research on Sustainable Forests

[Christopher Cronan](#), University of Maine, School of Biology and Ecology

[Michelle Johnson](#), University of Maine, School of Economics

[Rob Lilieholm](#), University of Maine, School of Forest Resources

[David Owen](#), University of Maine, School of Law

[Thomas Parr](#), University of Maine, School of Biology and Ecology



Aerial photos by Pam Wells

Site Development



[Stephen Engle](#), (Development Lead) Center for Community GIS

[Jennifer Strahan](#), GreenInfo Network

[Greg Allensworth](#), GreenInfo Network

[Jean-Luc Theriault](#), Center for Community GIS

[Alison DeGraff](#), Center for Community GIS



www.MaineLandUseFutures.org

Thank You!

