

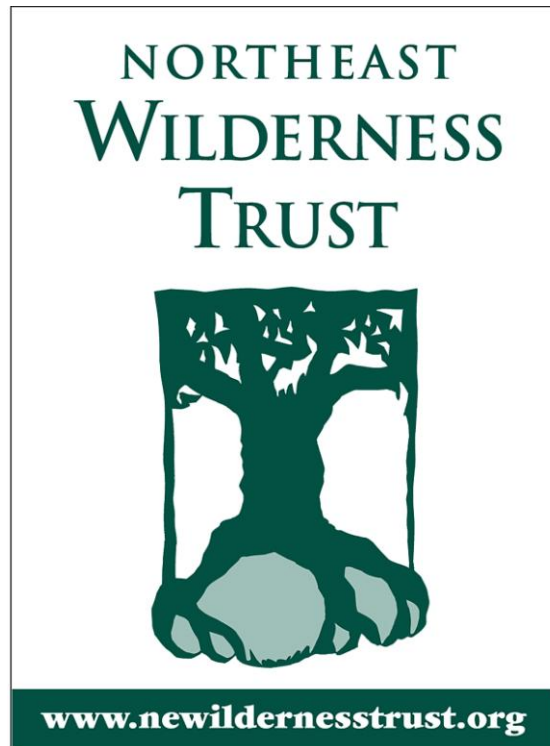






# Thank you

contact: [daryl@newildernesstrust.org](mailto:daryl@newildernesstrust.org)







Great Bay Resource Protection Partnership

***Partners in Coastal Watershed Conservation***



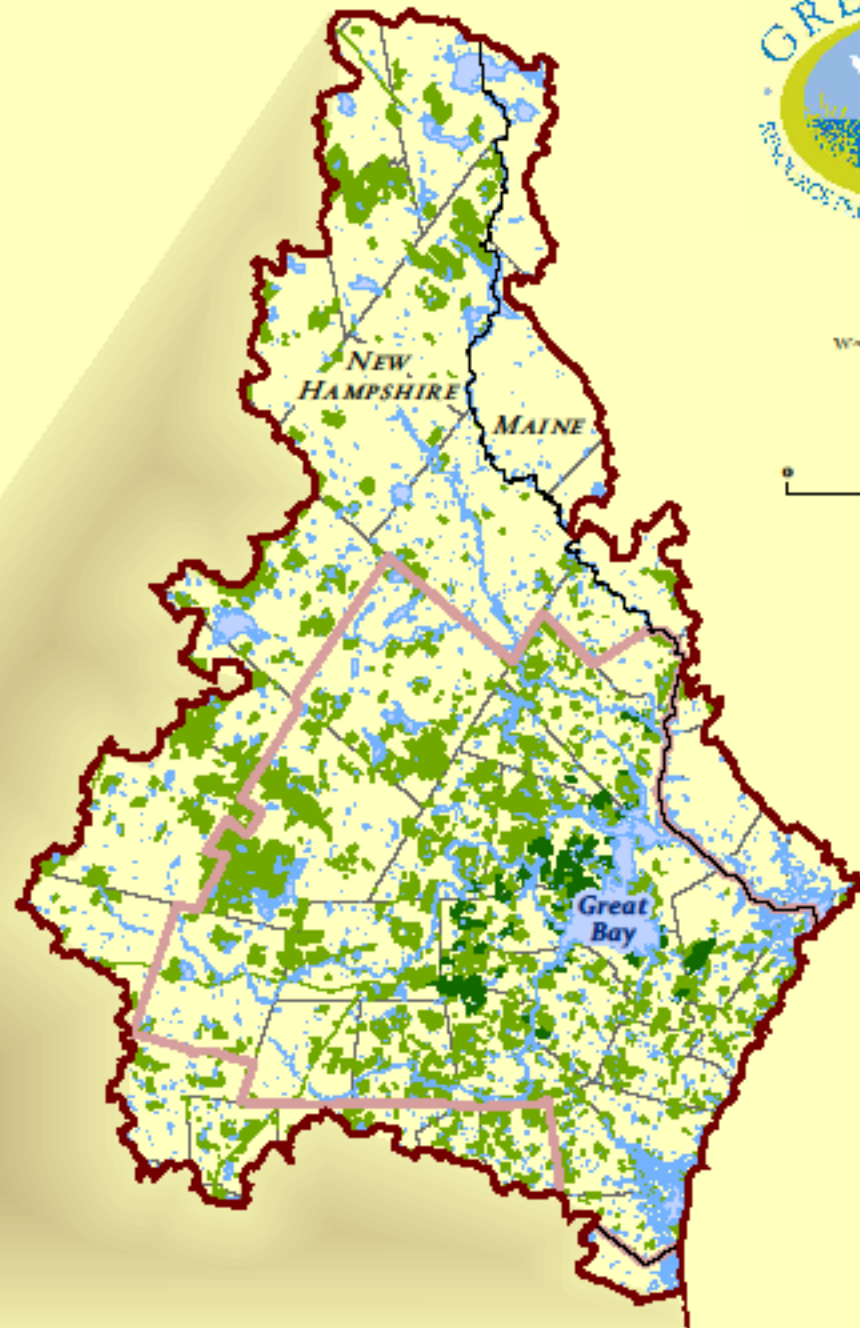
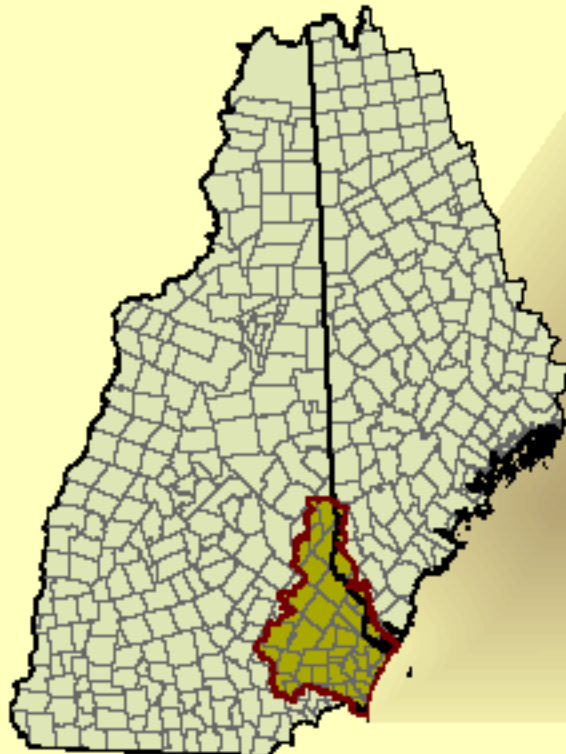
The Great Bay Resource Protection Partnership is a collaboration of conservation organizations in the coastal region that promotes landscape-scale land conservation and stewardship.

# Great Bay Resource Protection Partnership



## Legend

-  Coastal Watershed
-  Great Bay Focus Area
-  GBRPP Protected Land
-  Other Conservation and Public Lands
-  Surface Water
-  Municipal Boundary



## ***Great Bay - At the Heart of the Watershed***

- The coastal watershed of NH & Maine supports significant natural, recreational, scenic and cultural resources.
- Coastal watershed consists of 1,023 square miles, and includes nine major rivers, 12 sub-watersheds, and two estuaries of national significance.
- Great Bay a recognized estuarine ecosystem of local, regional, state and national significance.
- The estuary's rich aquatic wildlife habitats and unusual biodiversity supports more than 150 rare species and 55 exemplary natural communities and ecosystems.
- Great Bay provides waterfowl breeding, migration and wintering habitat for more than 20 species of migratory waterfowl species, winters 83% of all coastal waterfowl in the state.



Since 1994, the Partnership has operated as a collaborative to promote shared conservation goals and advance conservation programs. Comprehensive, landscape-scale approach to conservation and habitat protection.

*Primary activities of the Partnership include:*

**Conservation Planning:** Science & Research – Foundations for Decision Making.

**Land Conservation:** Steady Progress, Long Term Accomplishments.

**Stewardship:** Collaborative Resource Management.

**Education and Recreation:** Providing education and outreach, technical assistance, and public access - connecting people to land and water.

# The Partners

The Great Bay Partnership includes state and regional private non-profit conservation organizations and land trusts, federal and state public agencies, and municipalities.

- ❑ Operates as a voluntary collaborative under the facilitative direction of the Great Bay Coordinator.
- ❑ The Nature Conservancy & Society for the Protection of New Hampshire Forests serve as fiscal agents.
- ❑ Partner organizations provide expertise to accomplish conservation projects.

## ***Principal Partners***

- ❑ Ducks Unlimited, Inc.
- ❑ Great Bay National Estuarine Research Reserve
- ❑ New Hampshire Audubon Society
- ❑ New Hampshire Fish and Game Department





## **Land Conservation and Stewardship Goals**

The Partnership's comprehensive approach to conservation is guided by land conservation and stewardship goals that seek to conserve and/or enhance:

- 1. Wetland Ecosystems and Significant Habitats**
- 2. Migratory Bird Populations**
- 3. Exemplary Natural Communities and Habitats**
- 4. Working Landscape**
- 5. Landscape Stewardship and Management**
- 6. Water Quality**
- 7. Recreational and Educational Opportunities**



## CONSERVATION PLANNING

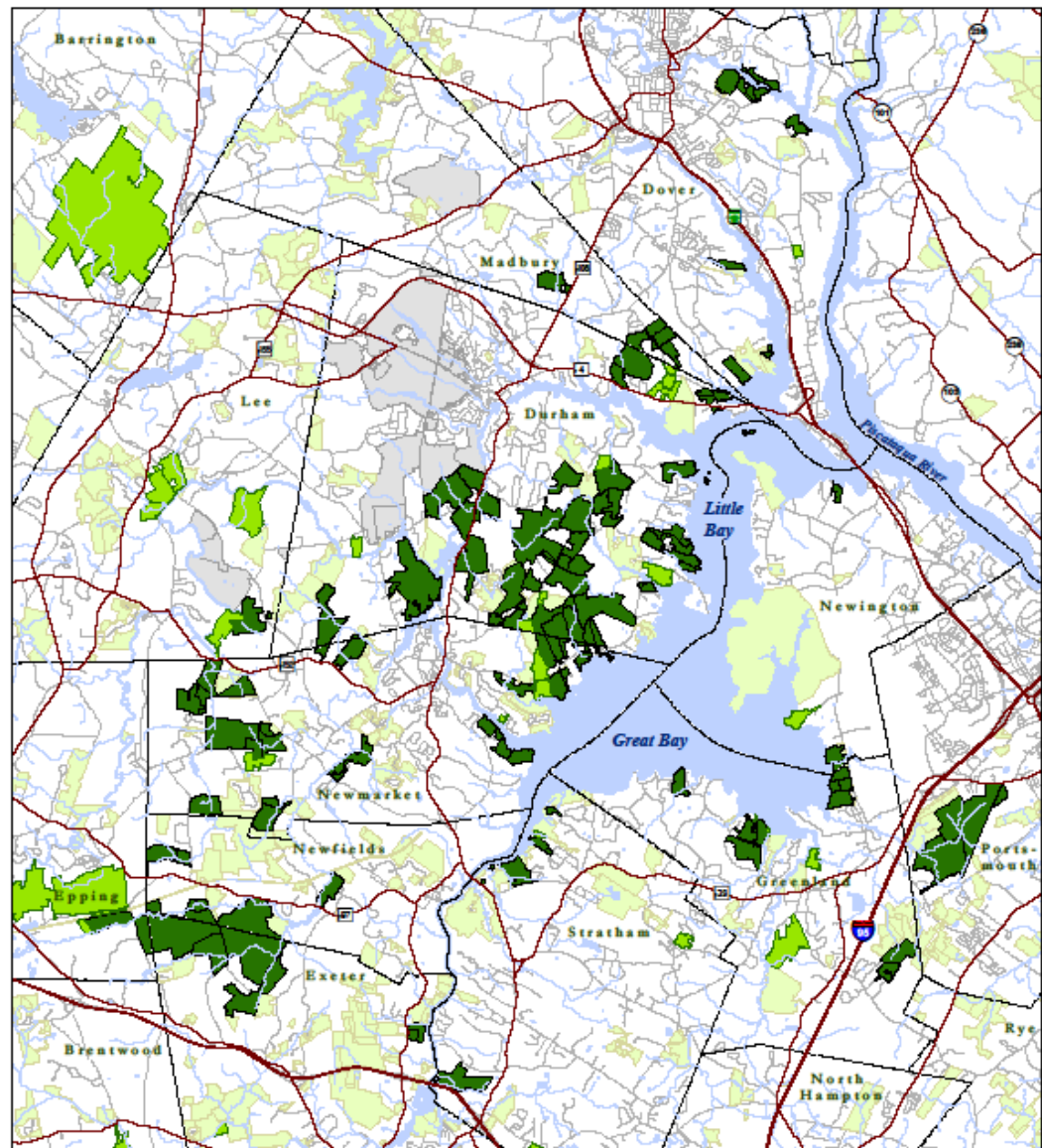
- Watershed habitat studies
- On-site field analysis
- Research projects
- Landscape scale management plans
- Foundation for selecting land conservation priorities & advising management decisions.
- Science-based process provides critical information about the ecosystem, wildlife habitats, and water quality resources.
- Collaboration among Partners builds a consensus process for decision-making on land conservation projects and stewardship programs.



# LAND CONSERVATION 1994 – 2013

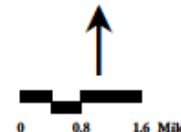
6,016 acres GBRPP protected  
107 Properties

11 communities  
12 Conservation Areas



## Great Bay Resource Protection Partnership Protected Lands

- GBRPP Lands
- GBRPP Match or Assist Lands
- UNH Owned Land
- Other Conservation and Public Land



Data Sources  
Hydrology: GRANIT  
Municipal Boundaries: GRANIT  
Conservation and Public Lands:  
GRANIT + TNC  
Roads: NH DOT

All other data and map production:  
The Nature Conservancy  
New Hampshire Field Office  
February, 2013



## STEWARDSHIP

- Collaborative management of conserved properties from a landscape scale perspective that respects the integrity of the entire ecosystem.
- Partner organizations collaborate on stewardship activities such as resource management, public access and restoration on conserved lands.



## RECREATION & EDUCATION

- Public recreational & educational opportunities compatible with natural resource protection and management.
- Pedestrian public access
- Website: Public Access & Hunting maps for conservation properties
- Sweet Trail 4 mile trail, Durham to Great Bay
- Partner organizations promote and manage recreational activities, coordinate volunteers.





A **collaborative effort** is key to the Partnership's successful conservation activities.

- Promote creative solutions for land conservation and stewardship projects.
- Build upon the conservation efforts of already protected and restored lands.
- Coordinate resources, and identify and pursue a variety of funding opportunities.
- Promote communication and cooperation between partnering entities.

**[www.greatbaypartnership.org](http://www.greatbaypartnership.org)**



## Crommet Creek

### Protecting and managing a diverse landscape with multiple conservation owners

- Conservation Plans (1997, 2000)
- Landscape Scale Stewardship Plan (2012)





# Crommet Creek

## Crommet Creek Conservation Area:

Total Acres: 4,902

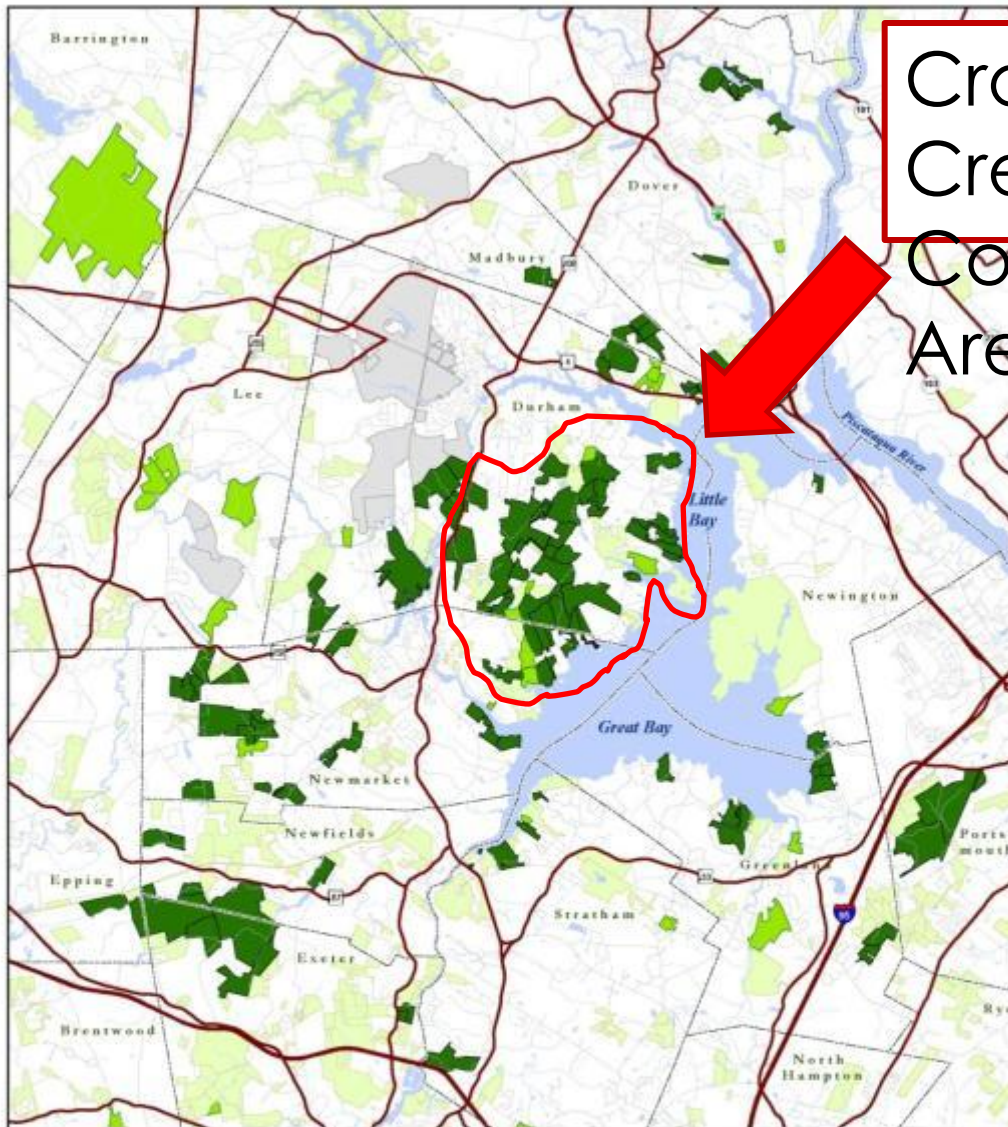
Total Protected: 2,425

- 53 Parcels
- 50% of Conservation Area

## Great Bay Partnership:

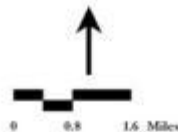
Protected Acres: 1,787

- 36 Parcels
- 74% of Protected Lands



### Great Bay Resource Protection Partnership Protected Lands

- GBRPP Lands
- GBRPP Match or Assist Lands
- UNH Owned Land
- Other Conservation and Public Land

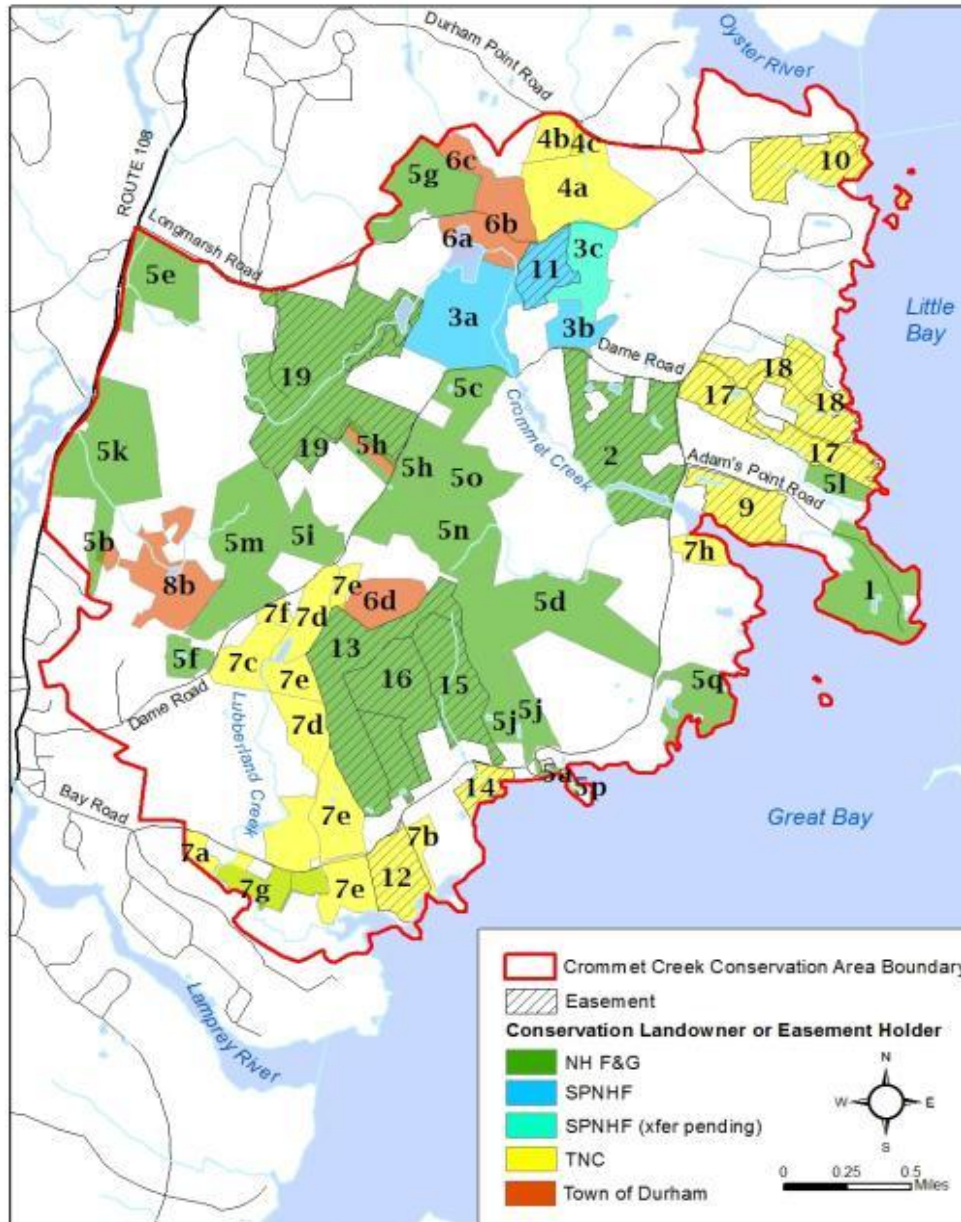


Data Sources  
Hydrology: GRANIT  
Municipal Boundaries: GRANIT  
Conservation and Public Lands:  
GRANIT + TNC  
Roads: NH DOT

All other data and map production:  
The Nature Conservancy  
New Hampshire Field Office  
February, 2012

©2012 The Nature Conservancy. All rights reserved. Photo: Steve Delaney, 2012

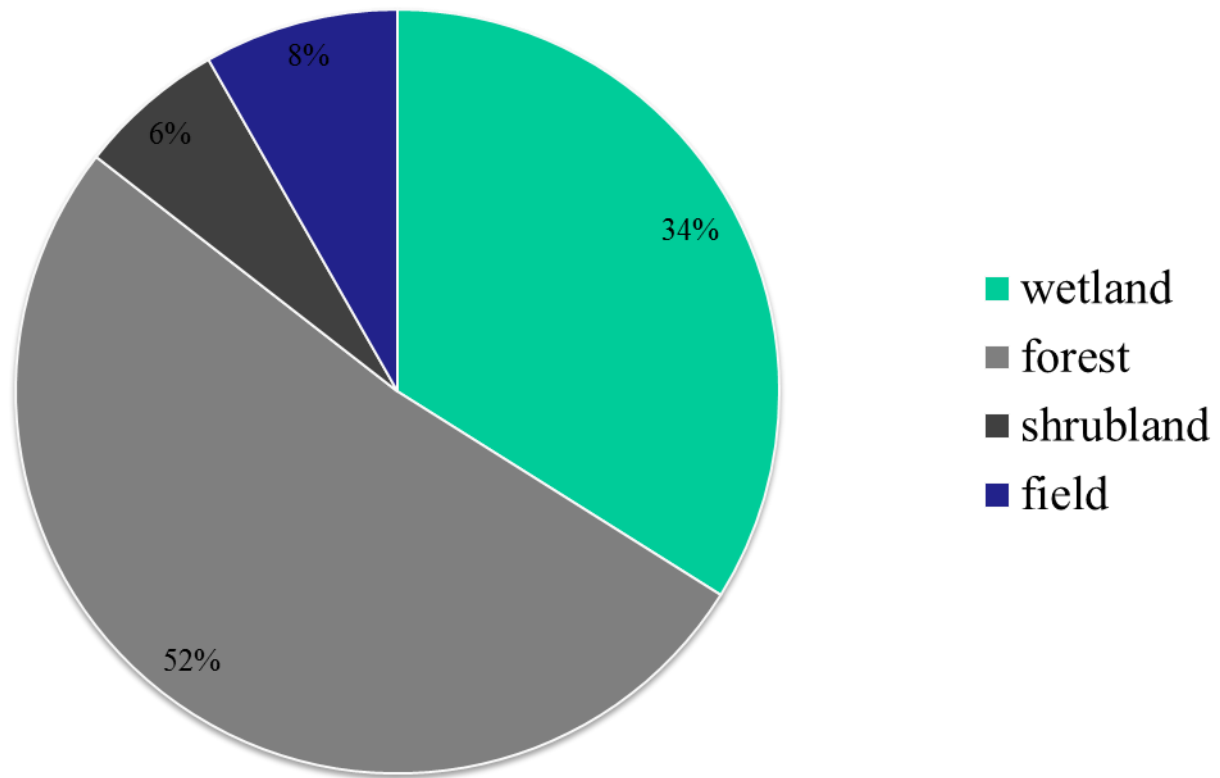
# Crommet Creek Map



- 6 nonprofit / public entities
- 13 Conservation Easement landowners

# About Crommet Creek

## Conservation Land Habitat Types





# Landscape Overview

Diversity of natural communities and wildlife habitats:

- ▣ soils
- ▣ topography
- ▣ water salinities
- ▣ land use history



*Beaver chewed tree. NHFG (Willey, 5n)*

In addition to:

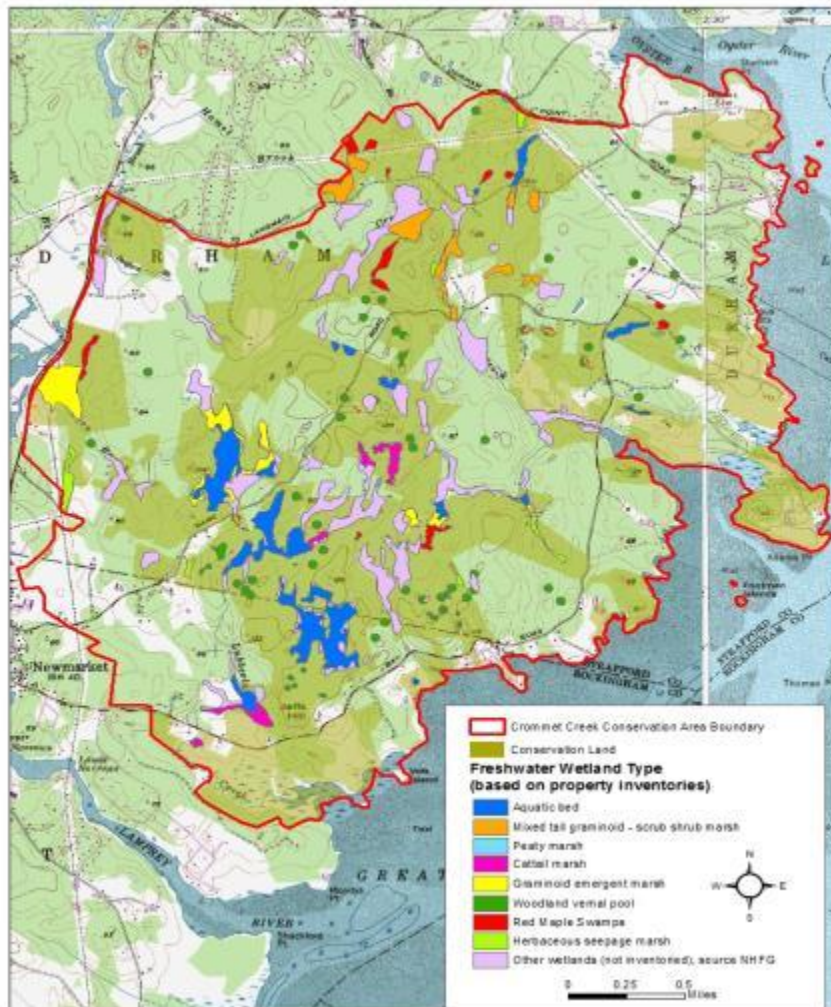
- ▣ influence of beaver activity in streams and wetlands
- ▣ moderate coastal climate allows for many southern species of plants to reach their northern limits

# Conservation Features / “Targets”

1. Wildlife Species
2. Freshwater wetlands
3. Early successional habitat
4. Grasslands
5. Salt marsh
6. Exemplary natural communities
7. Rare plants

# Conservation Feature/Target

## Freshwater Wetland Complexes



Wetlands	Acres within Crommet CA	% Protected
Priority wetlands	433	91

### Why it's a Conservation Target?

- 1 of the 5 primary conservation goals of the GBRPP
- habitat for many priority wildlife species

### Priority wetlands

- Identified by NHFG Wildlife Action Plan
- Field data from property resource inventories
- Vernal Pool survey by NH Audubon



# “CAMP” = Conservation Area Management Plan

1. Generate a Management Plan intended to be used as a reference guide for conservation landowners while making resource based decisions.
2. The Partnership will convene annual voluntary meetings of the conservation landowners in the Crommet Creek Conservation Area.

*CAMP meetings provide an opportunity for conservation landowners to discuss completed and proposed stewardship issues on their properties including:*

- *management activities*
- *research activities*
- *research information*
- *technical assistance*
- *funding sources*
- *opportunities for collaboration*
- *etc.*

# Landscape Scale Management Opportunities

- Large-scale challenges extending beyond property boundaries
- Suggested topics for Crommet Creek CAMP meetings
  1. Forest & Wildlife Habitat Management
  2. Research & Monitoring
  3. Invasive Species Management
  4. Water Quality
  5. Public Access & Recreation
  6. Eco-Reserves
  7. Climate Change Impacts

# Landscape Scale Management Opportunities

## Public Access & Recreation



### **THE SWEET TRAIL:**

An example of cooperative land/recreation management within the Crommet Creek Conservation Area



# Hunting Access

## Crommet and Lubberland Creeks

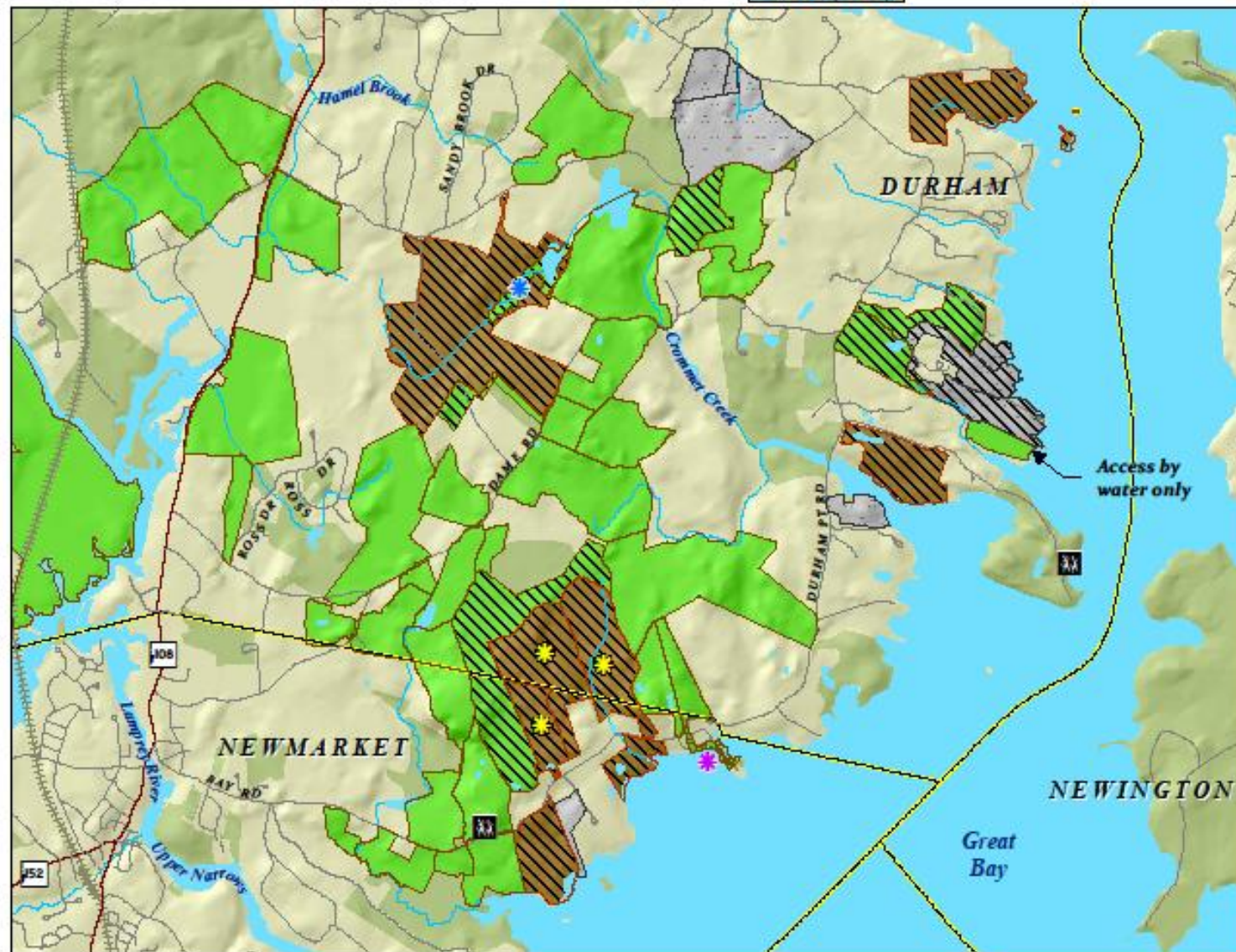
Great Bay Resource Protection Partnership

Location Map



SEE WEBSITE  
FOR ADDITIONAL  
HUNTING INFORMATION

[www.greatbaypartnership.org](http://www.greatbaypartnership.org)

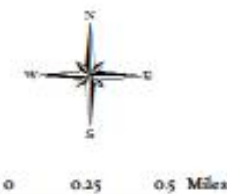


### Great Bay Partnership Tracts

#### Hunting Access Categories

- Hunting allowed
- Hunting at Discretion of Landowner
- Hunting not allowed
- Waterfowl hunting from water only
- Waterfowl hunting only (land or water)
- Waterfowl and upland game bird hunting only
- Easement
- Other Conservation and Public Lands
- Parking
- Trailhead with Parking
- Major Road
- Minor Road
- Railroads
- Streams
- Surface Water
- Municipal Boundaries

Access by water only



Map production by:  
The Nature Conservancy  
New Hampshire Field Office  
March 31, 2011



# Public Access and Use

## Crommet and Lubberland Creeks

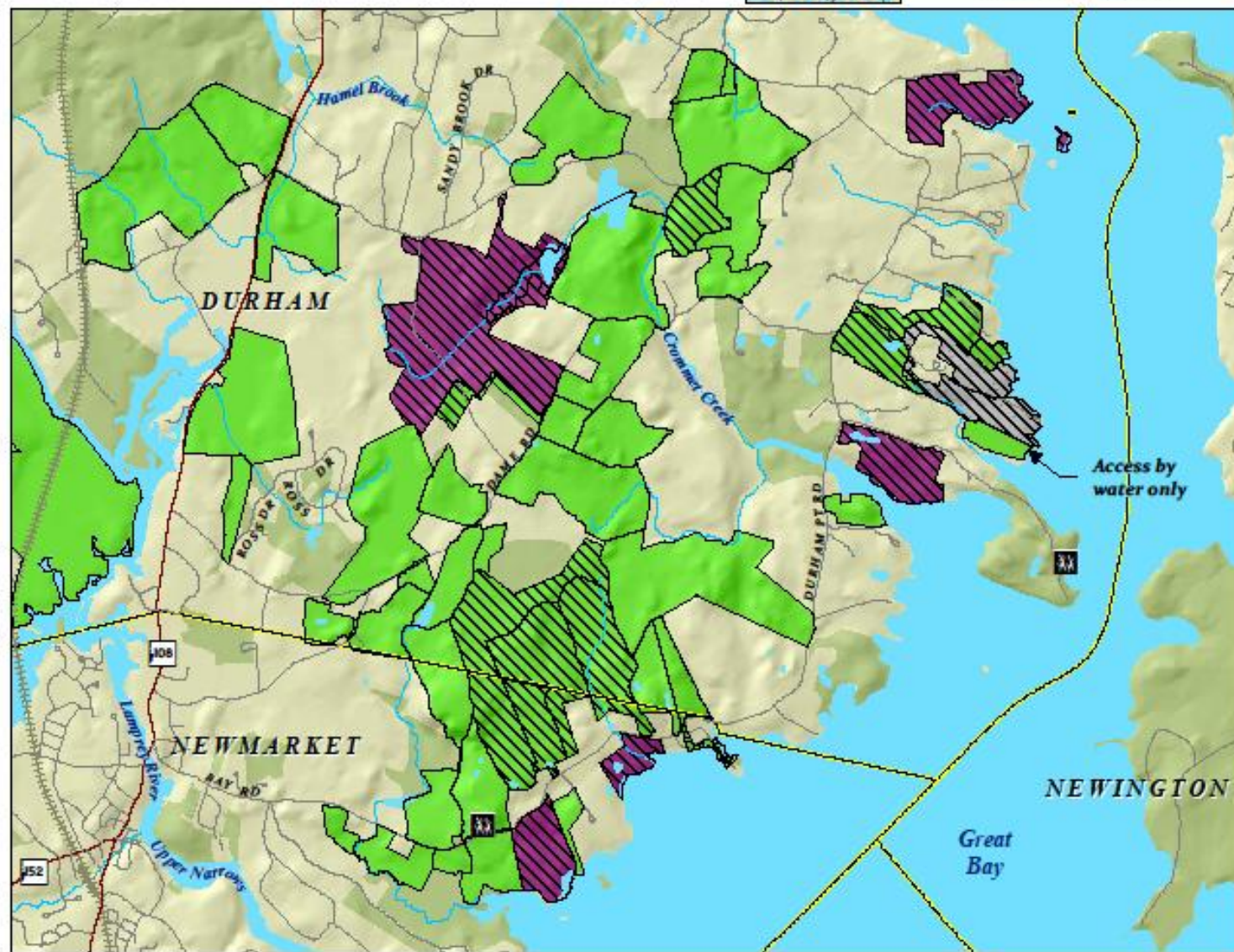
Great Bay Resource Protection Partnership

Location Map



**PARTNERSHIP PERMITTED PEDESTRIAN USES INCLUDE:**

- hiking •
- cross-country skiing •
- snowshoeing •
- fishing •
- canoeing/kayaking •
- see website for complete list •

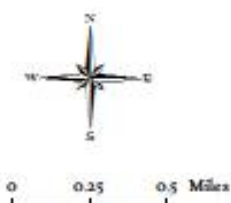


**Great Bay Partnership Tracts**

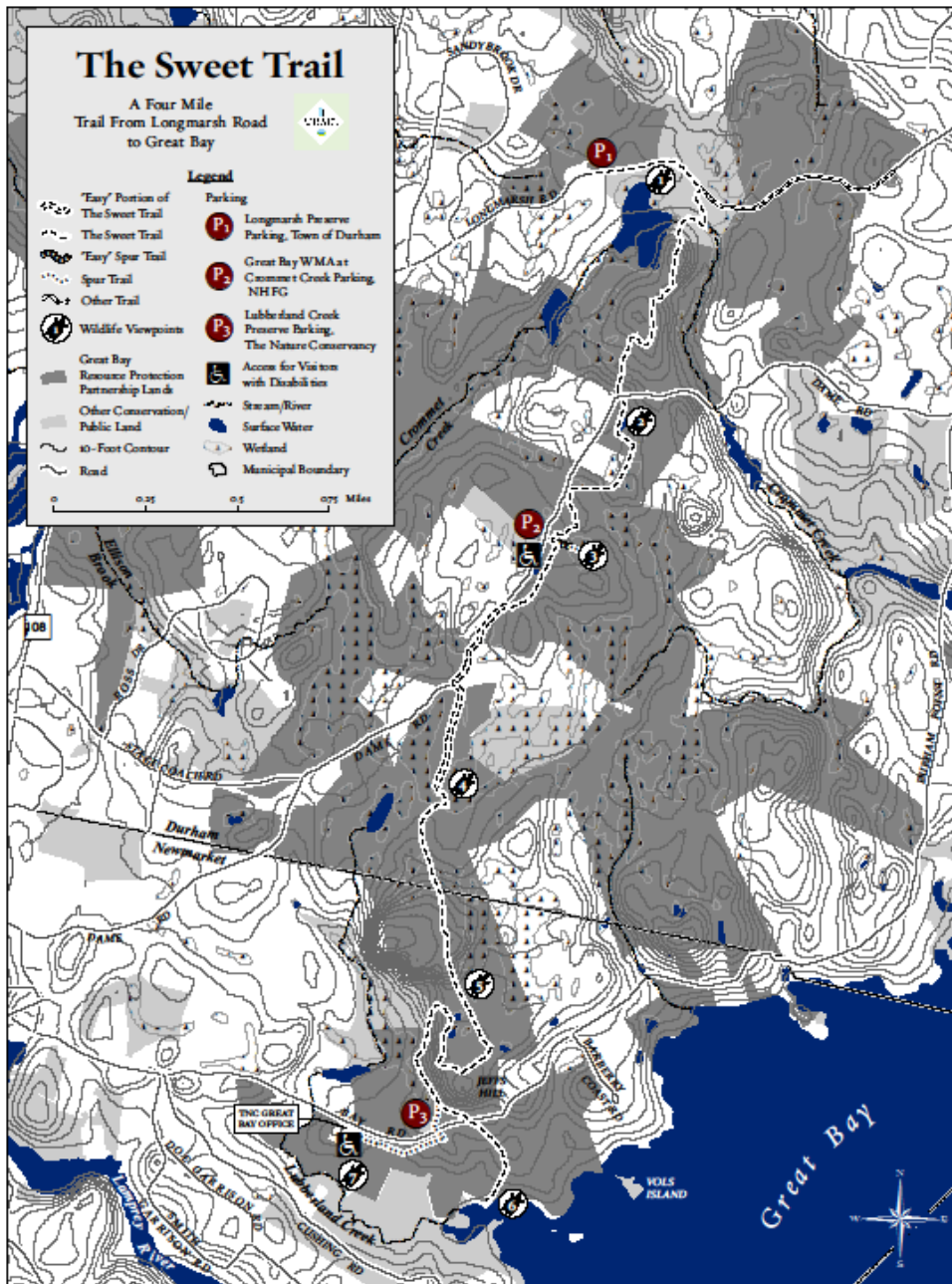
**Public Access Categories**

- No public access
- Pedestrian public access at discretion of landowner
- Pedestrian public access allowed
- Easement
- Other Conservation and Public Lands
- Parking
- Trailhead with Parking
- Major Road
- Minor Road
- Railroads
- Streams
- Surface Water
- Municipal Boundaries

Access by water only



Map production by  
 The Nature Conservancy  
 New Hampshire Field Office  
 March 31, 2011





# Landscape Scale Management Opportunities

## Public Access Management Recommendations

- The allowable public access and recreational uses on the conservation land should correspond to the management goals, and thus have minimal impact on water quality, wildlife habitat, rare species, and natural communities.
- Promote low impact recreation with limited infrastructure
- Motorized vehicles are not allowed on any GBRPP protected lands, except for management purposes. It is recommended that other lands within the Conservation Area consider the impacts of motorized vehicles before allowing use on their lands.

# Landscape-Scale Conservation Collaboration

## Conservation Work that Supports Habitat Diversity

- Common Land Conservation & Stewardship Goals
- Conservation Planning – Foundation for decision-making for land conservation action & stewardship.
- Ecosystem Stewardship: Individual property owner decision making supported in a watershed context.
- Communication & Participation





[www.greatbaypartnership.org](http://www.greatbaypartnership.org)