



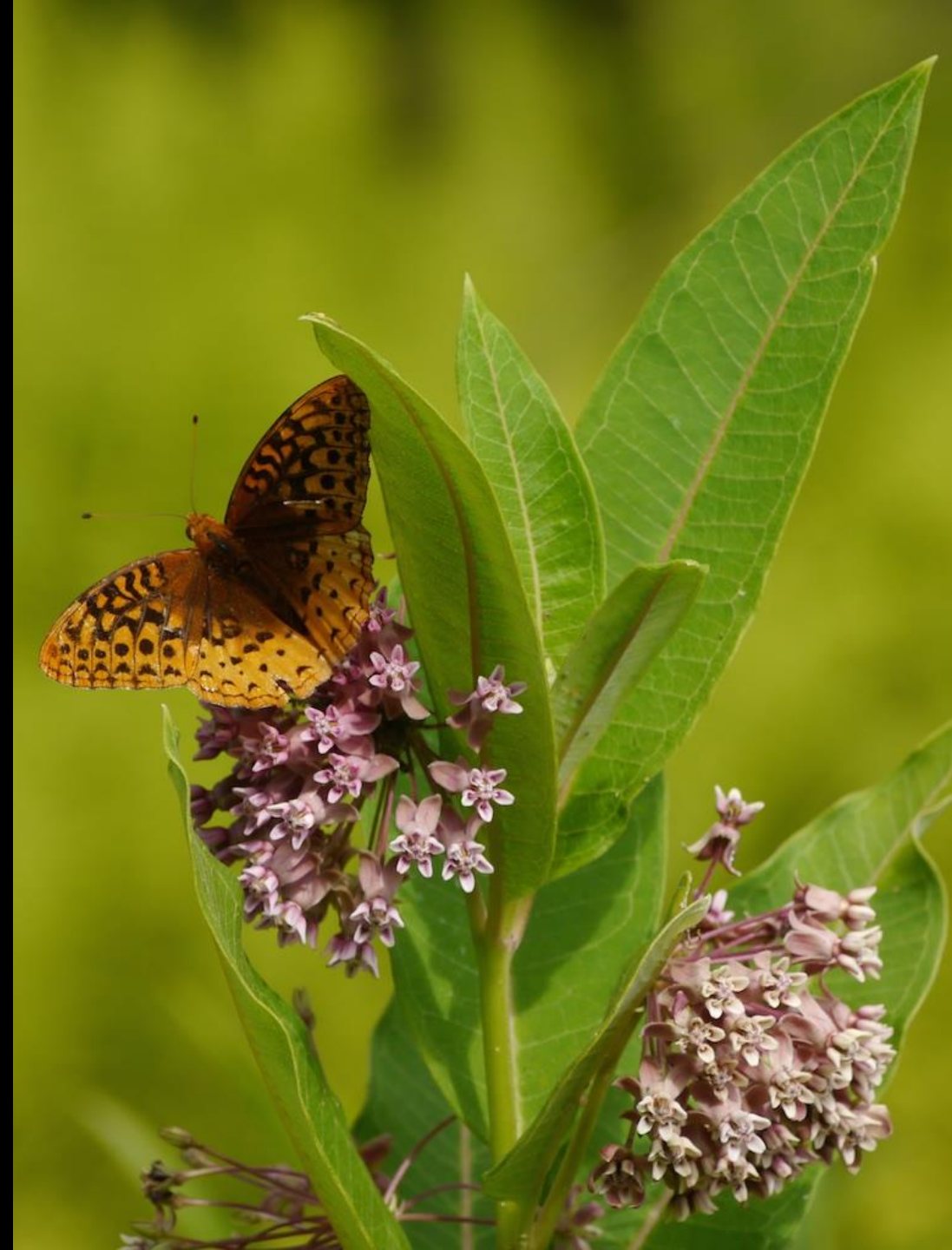
# Introduction to Pollinator Pathways

RCP Network Gathering. UMASS Amherst

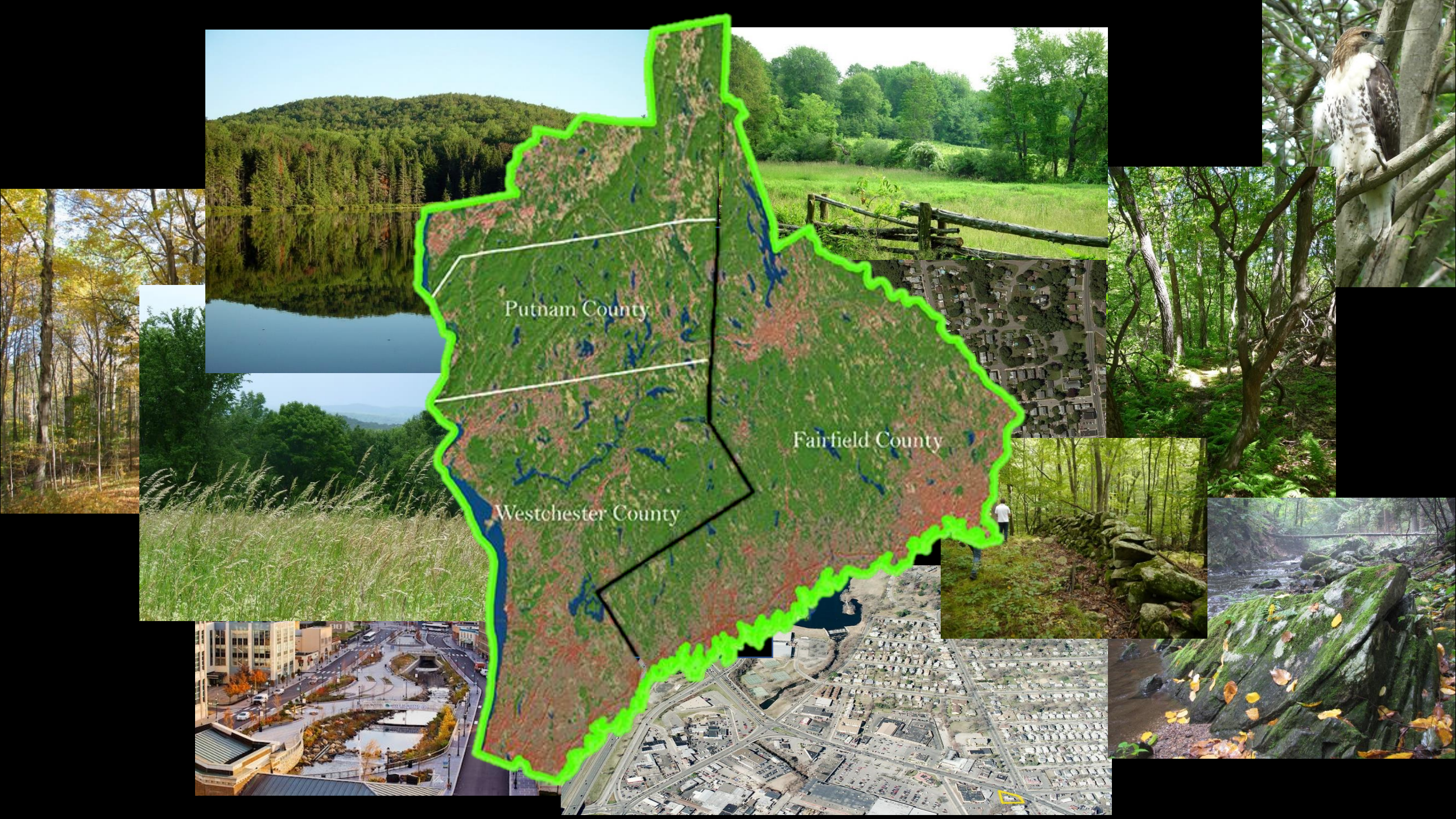
November 15, 2018

Mary Ellen Lemay

H2H Facilitator



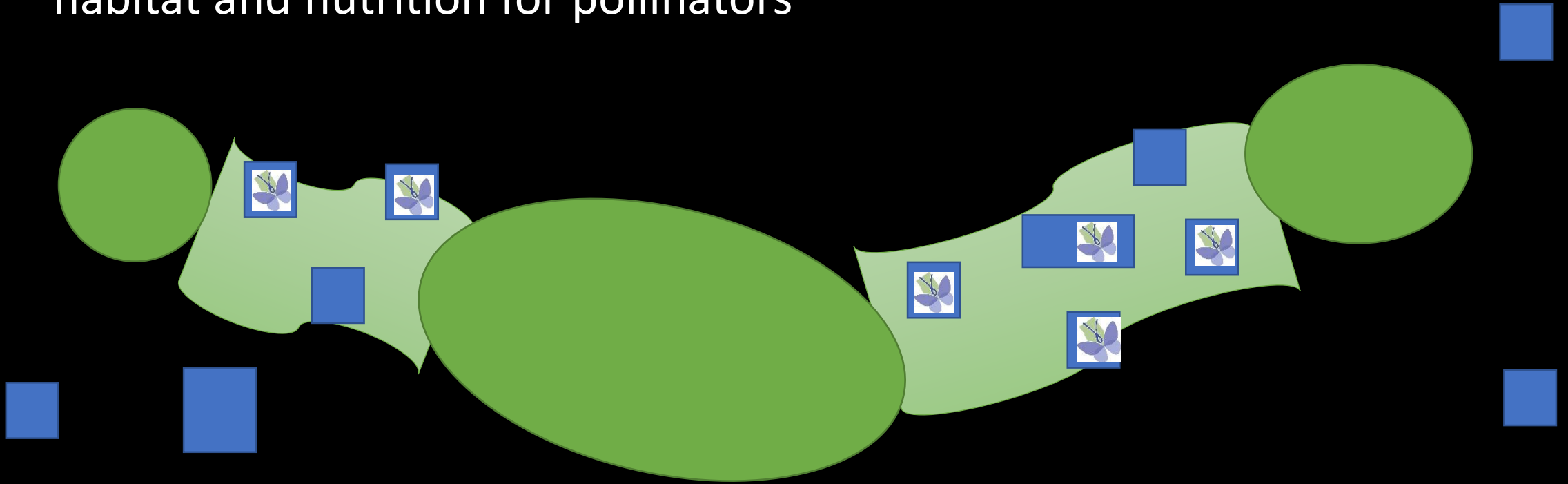






# What is a Pollinator Pathway?

Corridors of public and private properties that provide native plant habitat and nutrition for pollinators



Municipalities and property owners create healthy yards and public spaces for pollinators, pets & families

# A Scalable Model

## Demonstration Sites



Land Trusts, Nature  
Centers, Municipalities,  
Homeowners

## Pollinator Gardens



Land Trusts, Schools,  
Municipalities



Homeowners,  
Municipalities, Libraries,  
Schools, Businesses

## Container Gardens



Homeowners, Businesses

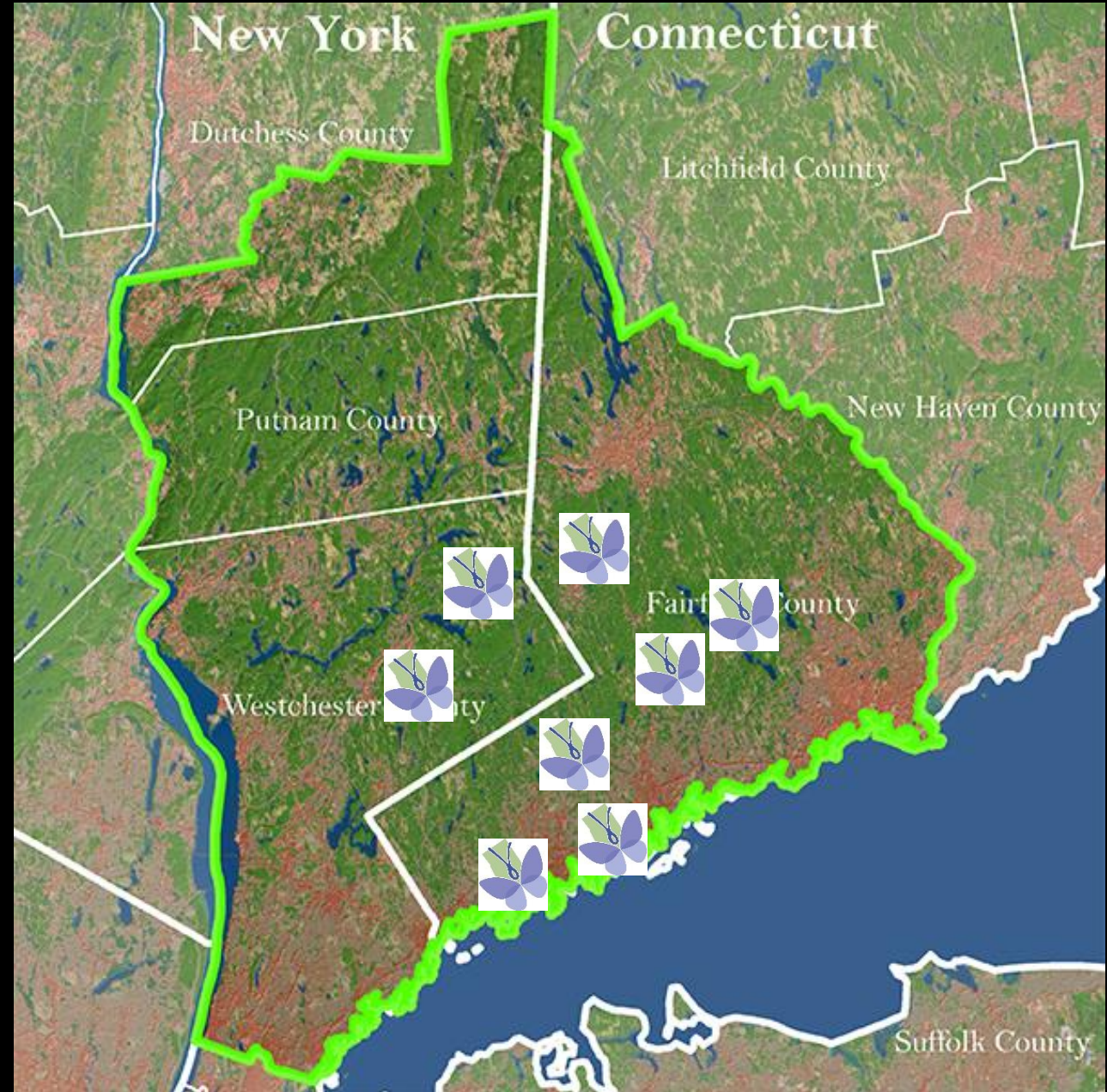
**Planning, Complexity, Cost**



# Pathway Progression



**H2H Conservation Initiative 2016**  
Attended Educational Events 130+  
Followed up with land trust or took  
stewardship action 40+  
Trees Planted 81+  
**2017** (launch in Wilton)  
16 Programs, 1048 people engaged  
**2018** (1<sup>st</sup> quarter only) (6 towns)  
19 Programs, 940 people engaged



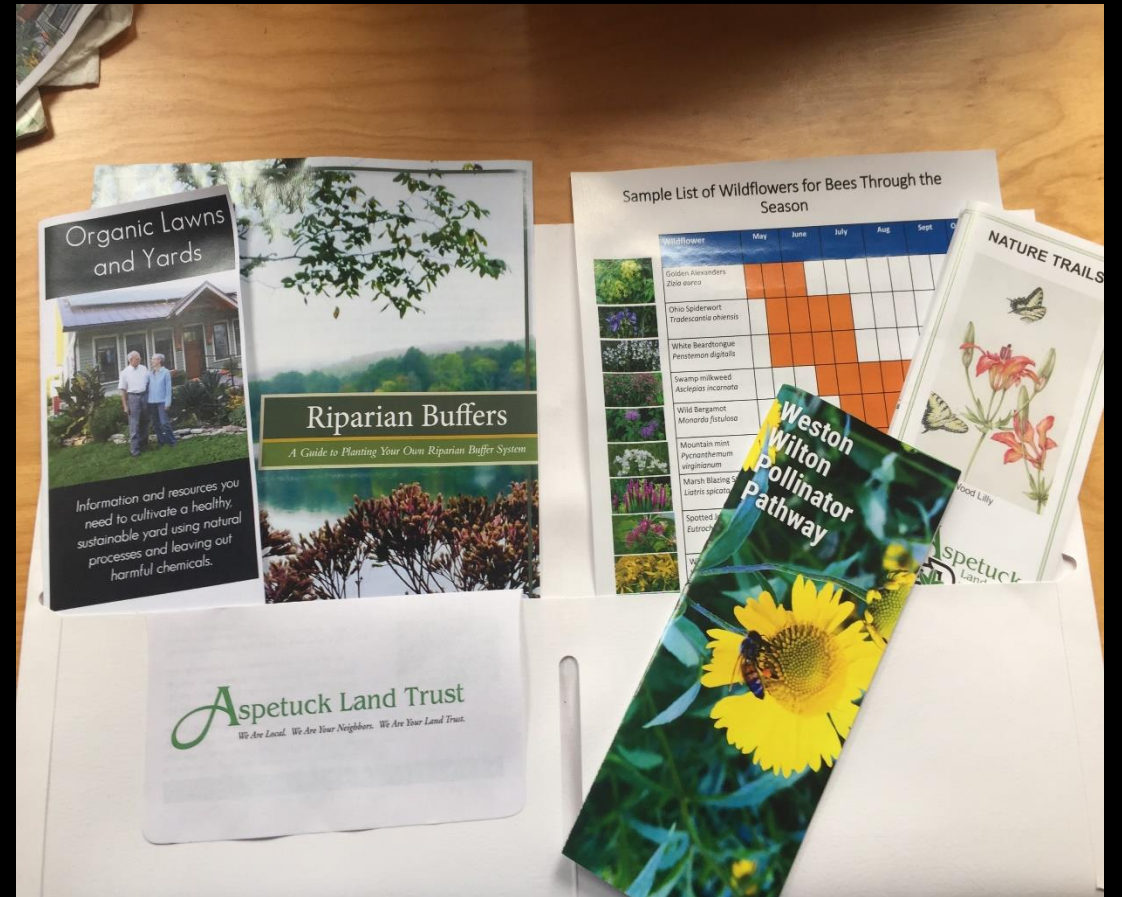
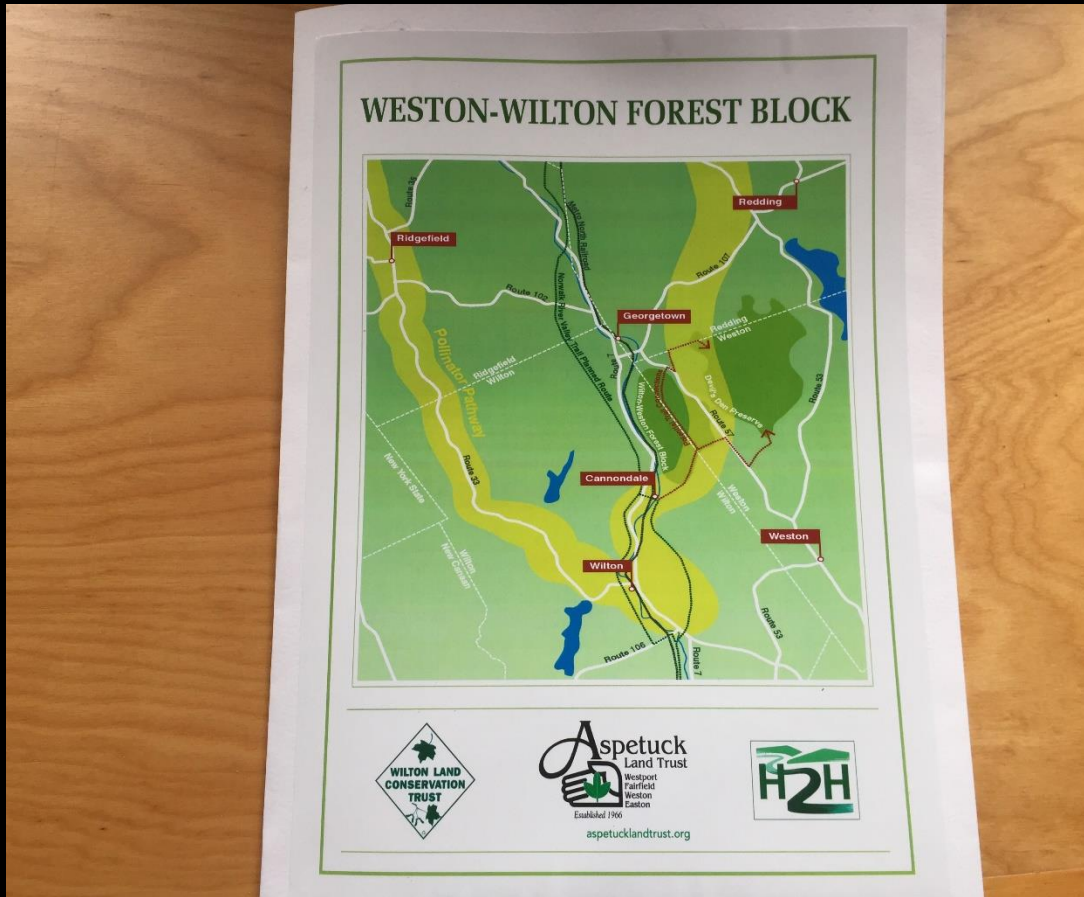
# Starting a Pollinator Pathway in Your Town

1. Convene Your Team
2. Plan Your Route
3. Hold a Kickoff Event
4. Engage Community Members
5. Spread the Word with Branding
6. Stay Connected





# Create Customized Pollinator Information Packets



# Convene Your Team

- Land Trusts
- Nature Centers
- Conservation Commissions or Advisory Boards
- Garden Clubs
- Master Gardeners
- Watershed Associations



Wilton Land  
Conservation Trust



WOODCOCK

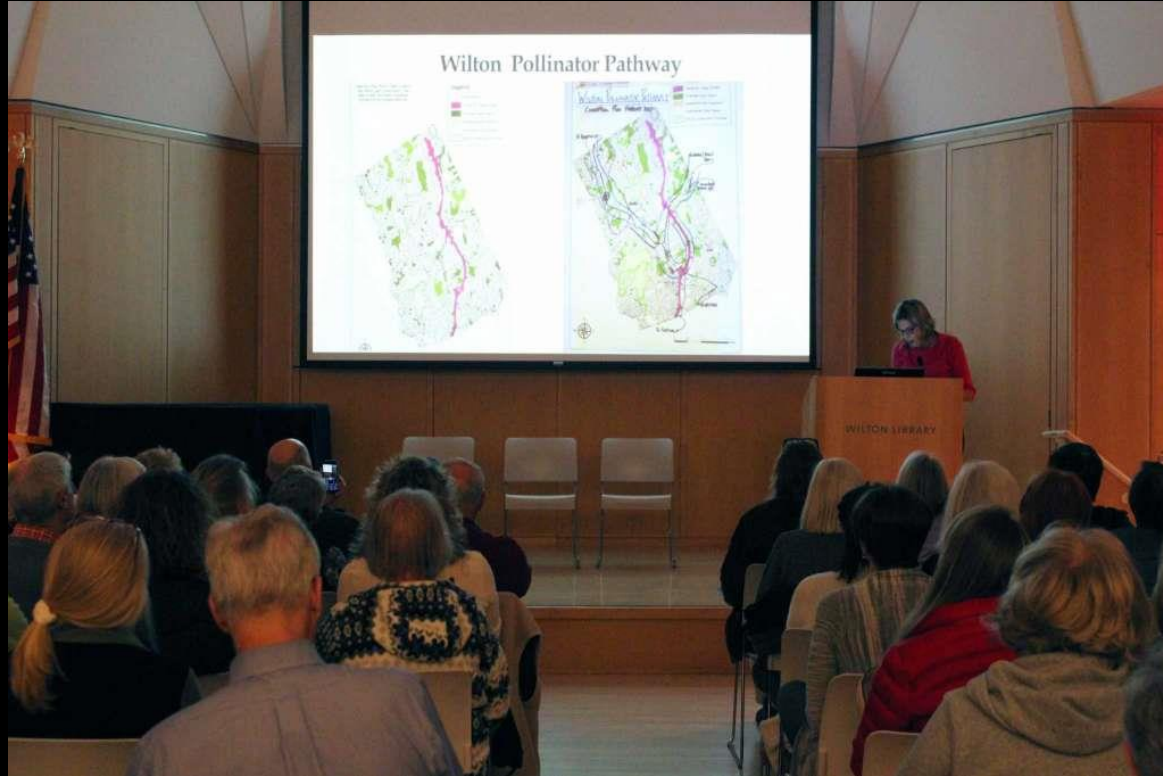


NATURE CENTER





# Hold a Kickoff Event with national, state, or local speaker



# Plan Your Route with RCP support





# Engage Community Members





# Spread the Word:

using local newspapers, social media,  
town events





Wilton  
Weston  
Ridgefield  
Norwalk  
Greenwich  
Pound Ridge  
Darien  
Yorktown





# Norwalk River Watershed Association: Doorknob hangers Strong corporate support



**Help Us Build  
a Pollinator  
Pathway!**

Bring bees, birds and butterflies  
to your corner of the Norwalk River Valley. ➔  
Find out how

**NRWA**  
Norwalk River Watershed Association, Inc.





# Stay Connected with Websites



[About H2H](#) [News](#) [Resources](#) [Events](#) [Contact Us](#) [Get Updates](#)

## About H2H



Who We Are



What We Do



Where We Work

[h2hrpc.org](http://h2hrpc.org)

## Pollinator Pathways

*Establishing pollinator-friendly habitats and food sources for bees, butterflies, hummingbirds and other pollinating insects and wildlife*

[Log In](#)

[Home](#) [About](#) [Pollinator Pathways](#) [Your Backyard](#) [Resources](#) [Get Involved](#) [Contact](#)



Photos courtesy of Dana Cronin

[pollinator-pathway.org](http://pollinator-pathway.org)



