

Multi-parcel Campaigns: Tools, Techniques, and Best Practices

Jim Bonesteel

Rensselaer Plateau Alliance

Charlie Hancock

Cold Hollow to Canada

Sarah Wells

North Quabbin Regional Landscape Partnership

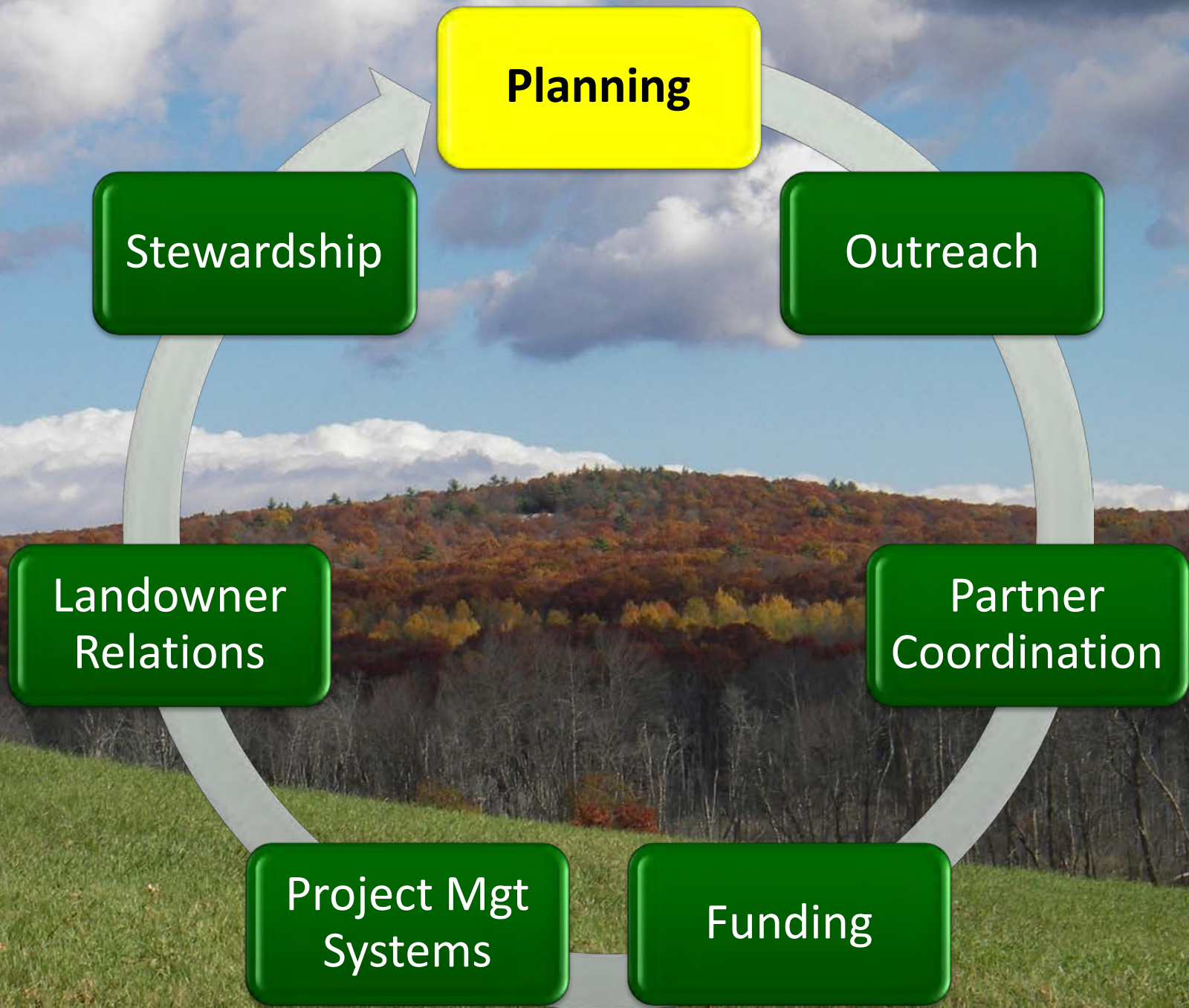


Aggregation Chronology

20 years

\$30 million

~220 tracts of land

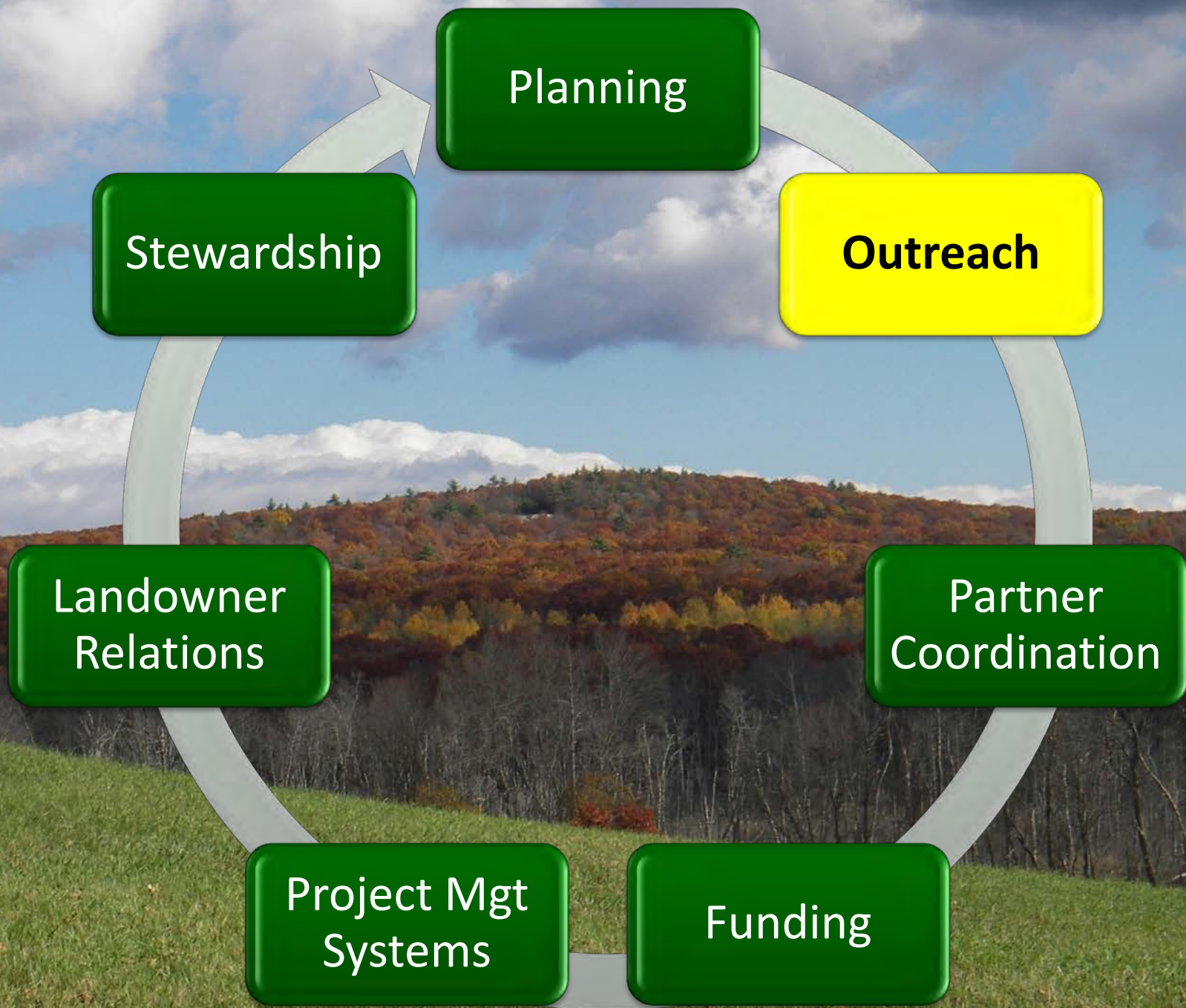




Planning

Tools: In-person meetings, maps

Best Practice: Build a planning team and use it



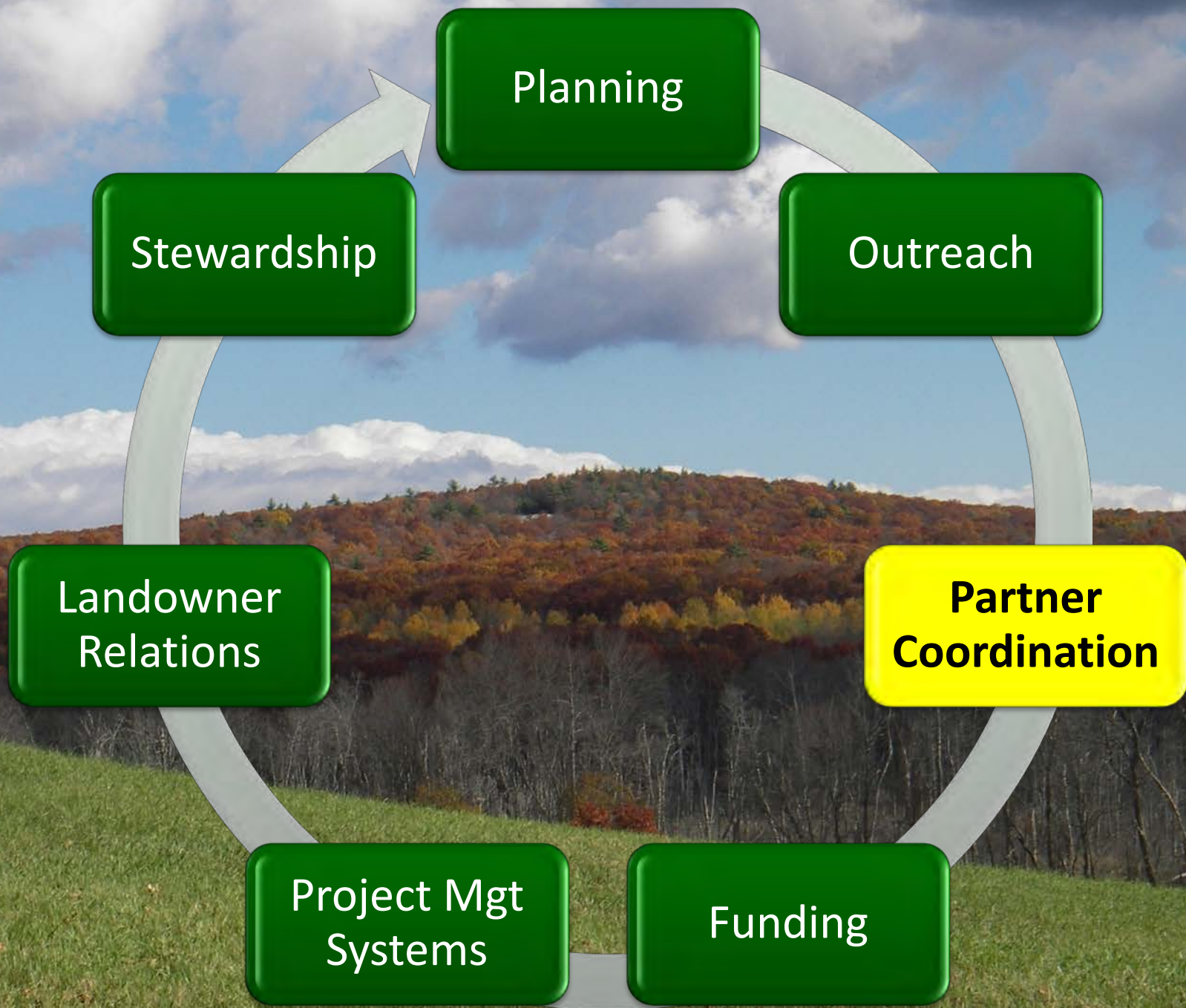


Outreach

Tools: Maps, meetings, events, handouts, mailings, phone calls

Technique: Share resources

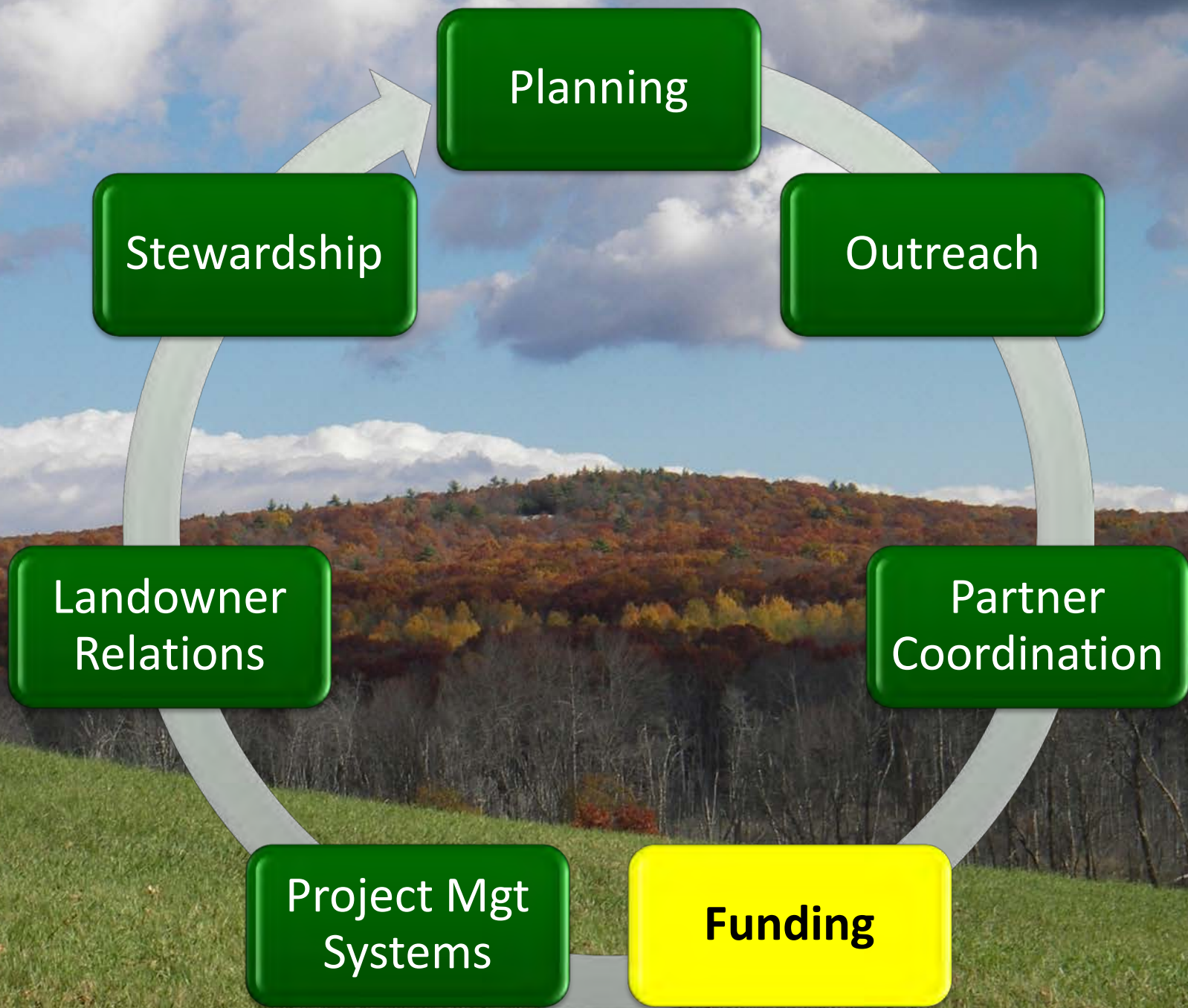
Best Practice: Fairness and trust





Best Practice: Be flexible

**Partner
Coordination**



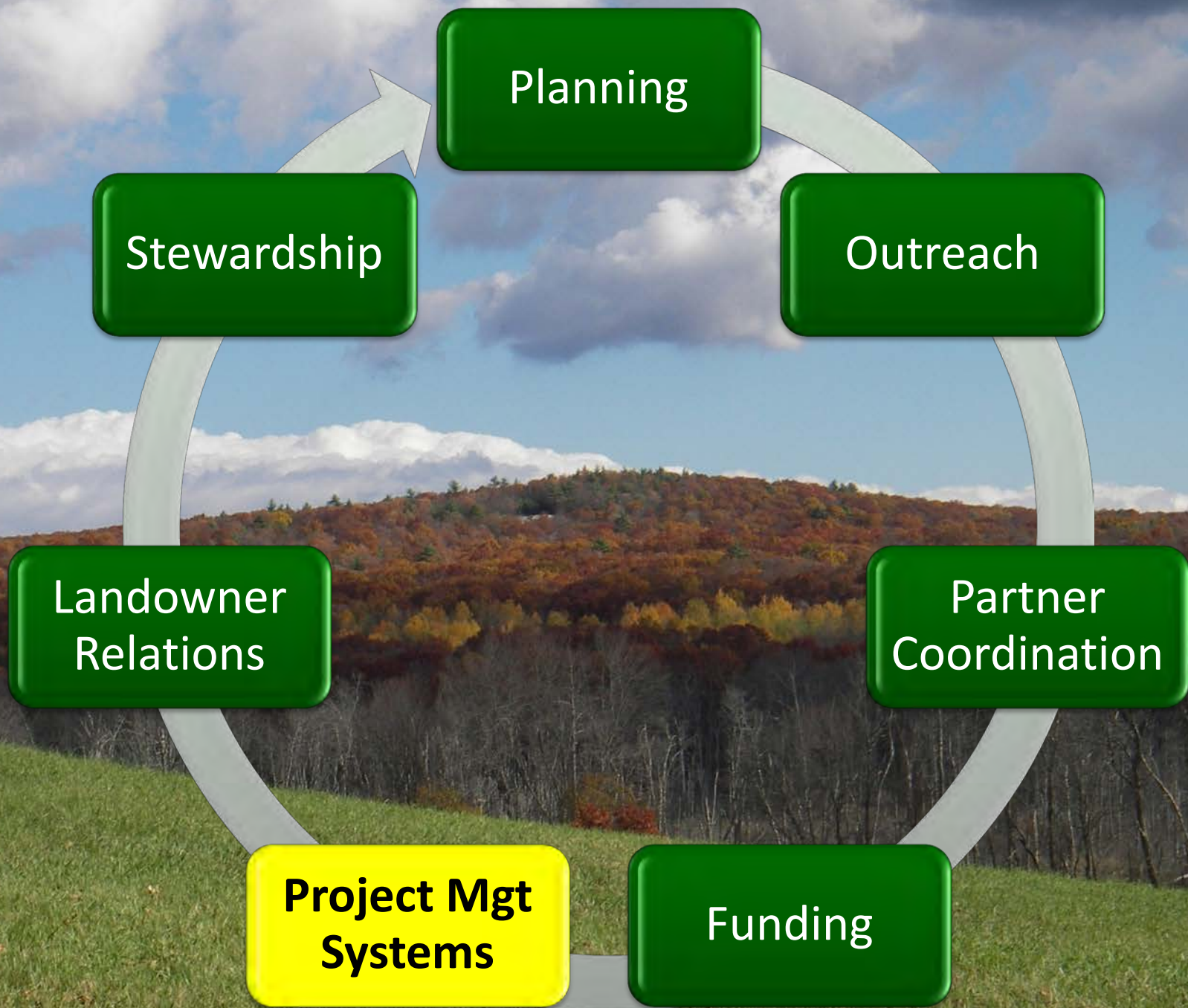



Tools: Collaborative fundraising MOU,
spreadsheets of potential funders

Best Practice: Be adaptive



Funding



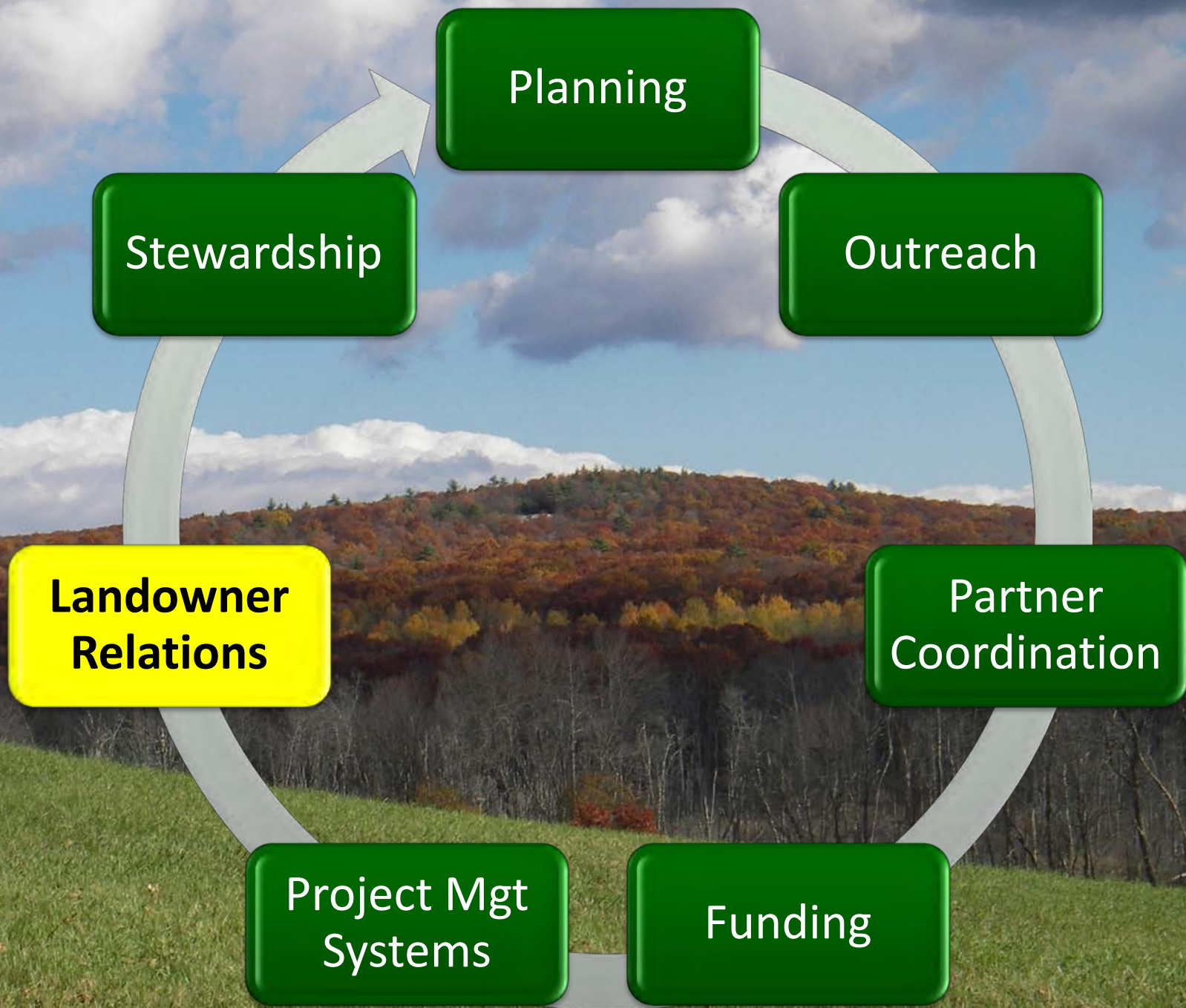


Tools: Timelines, google docs,
regular check-ins

Technique: Share resources

Best Practice: Simpler is better.
Keep information updated! Know the
bottlenecks

**Project Mgt
Systems**



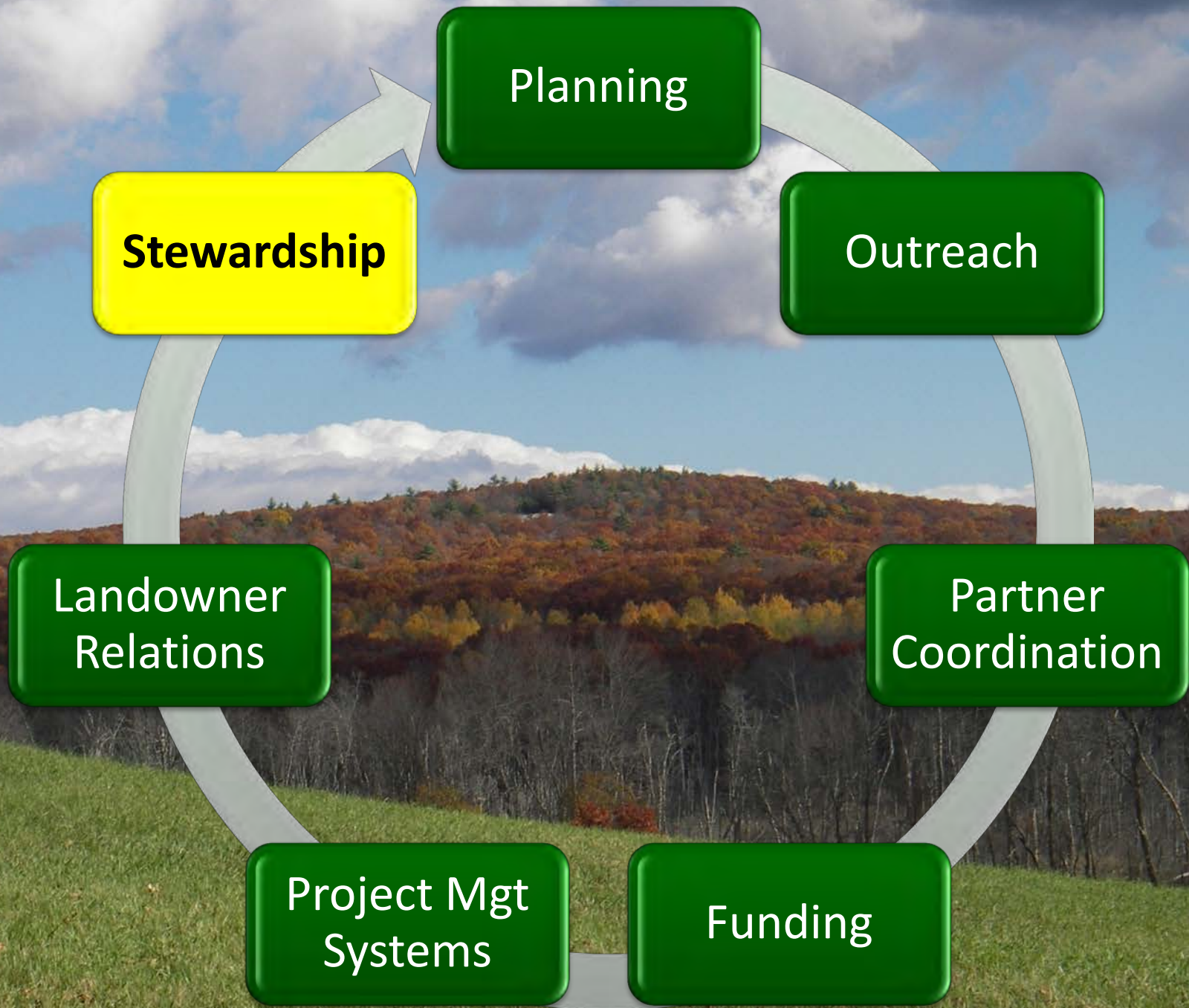


Tools: Meetings, phone calls

Best Practice: Expectations, story



**Landowner
Relations**





Stewardship

Tools: easement defense, stewardship
\$\$

Technique: Training, back-up holders

Best Practice: Plan ahead

Rensselaer Plateau Working Forest Initiative

Partners



Rensselaer Plateau Alliance

Conservation Through Community



Thank You



Sarah Wells

Jay Rasku

Leigh Youngblood

For being our mentors.



Landowner's Guide to the Forest Legacy Program on the Rensselaer Plateau



What's the purpose of the Forest Legacy Program?

The Forest Legacy Program is a project of the U.S. Forest Service. It was established in 1990 to promote the long-term integrity of woodlands. The Forest Legacy Program identifies and protects environmentally important woodlands that are threatened by conversion to non-forest uses and provides the opportunity for continuation of traditional forest uses, such as woodlot management activities and outdoor recreation.

How is land protected through the Forest Legacy Program?

Forest Legacy conserves land in two ways: outright acquisition of land, or acquisition of the development rights of land through a conservation easement. A conservation easement permanently removes certain rights from the land – such as building, dumping, paving and mining – but keeps the land in private ownership. Landowners continue to use the land for outdoor activities, such as recreation, hunting, and forestry. The conservation easement is permanent, recorded with the county records, and stays with the land when it is transferred or sold to another landowner. Once the transaction is complete the land under the easement may never be developed.

The Rensselaer Plateau Alliance and our partners prefer the use of conservation easements and not for fee acquisition.

Land or conservation easements purchased with Forest Legacy funding must be held by the state. Donated land or conservation easements can be held by a land trust.

The state's funding is highly competitive at both the state and national levels. Projects that best meet the criteria are more likely to get funded in the President's budget. Because of this, we encourage you to make a strong application.

Rensselaer Plateau Alliance
Conservation Through Community

Land Conservation / Forest Legacy Open House

When: Tues, April 26 - drop by anytime between 3pm and 7pm
Crooked Lake House in Sand Lake

Join us at this free Open House where experts will answer questions about Forest Legacy funding, sale of development rights, 480a forest tax incentive program, Master Forest Owner program, conservation easements, and other land conservation tools. We will also have an attorney/land use planner to answer legal questions. There will be representatives from DEC, RPA, Rensselaer Land Trust and the New York Forest Owners Association. This workshop is for people who: are considering selling or donating development rights on their forestlands in the newly designated Forest Legacy Area or are interested in the other programs listed above. For information, directions or to express interest visit <http://www.renselaerplateau.org> or call 518-794-9160.

Materials for Landowners

- Landowner's Guide to the Forest Legacy Program
- Pros and Cons of Conservation Easements
- NYS DEC Sample Easement
- Participation Letter
- NYS General Obligations Law excerpt
- Customized map for the landowner
- LTA – Using the Conservation Tax Incentive
- LTA – FAQ about NY's Conservation Easement Tax Credit



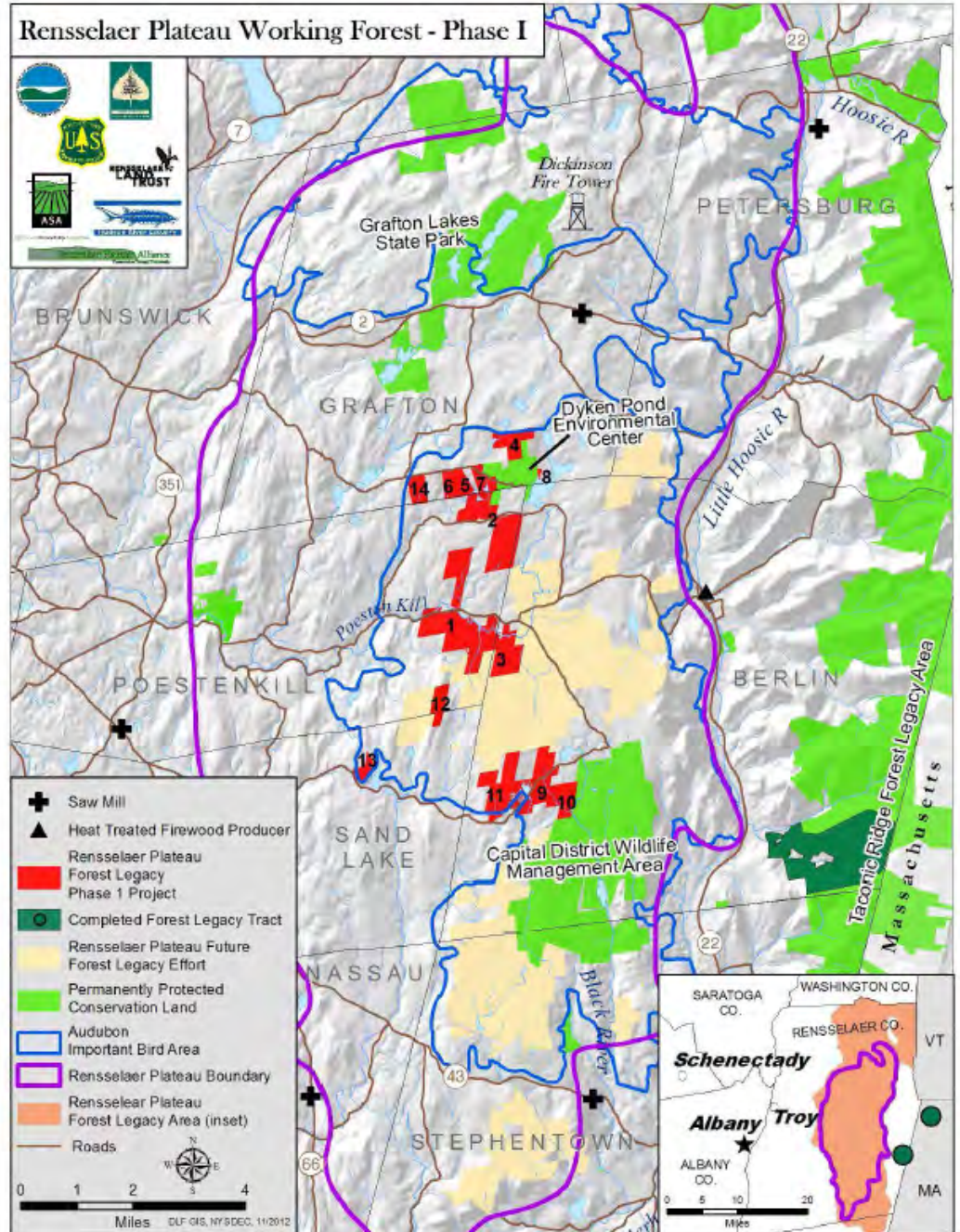
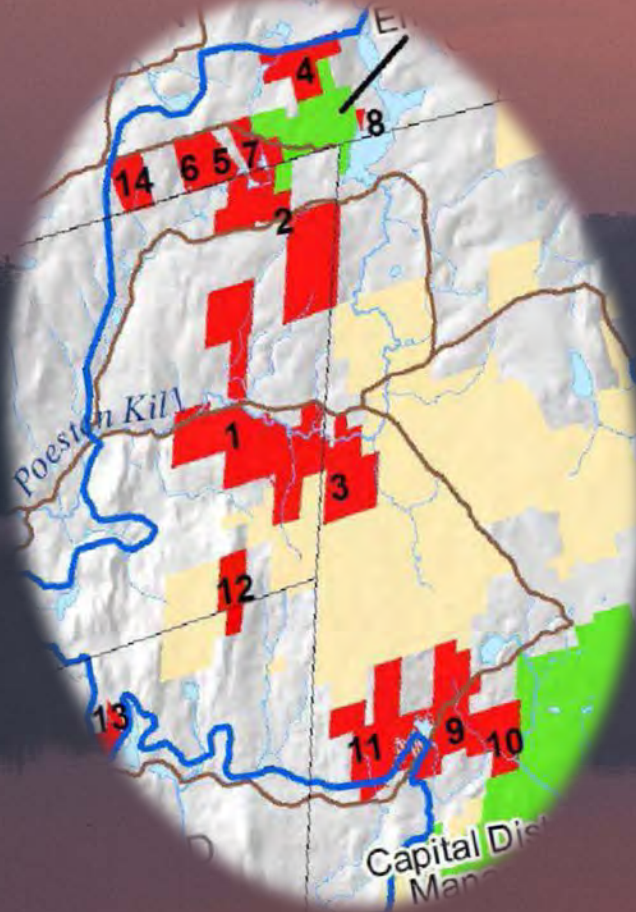
Don't forget to talk about:

- This is not a sure thing
 - o The grant might not be awarded
 - o Your land might not be selected for this grant
 - o In all cases we will continue to work with you in future years or to try to find alternative funding or approaches
- Please consider a bargain sale
- Timeline
 - o 3 – 5 years
 - o First news probably in Feb (US ranking of grant). Timing of grant award announcement varies depending upon budget in Congress
 - o Funds not available for 2 – 3 years. Another 2 years to close.
- What does the commitment letter mean?
 - o Landowners who sign must be serious about participation
 - o But, you are not bound by it if your circumstances change
- Recreation Rights

Recreation rights with strengthen the grant and make it more valuable. Land can be included in the grant. This can include a... not etc. Landown...

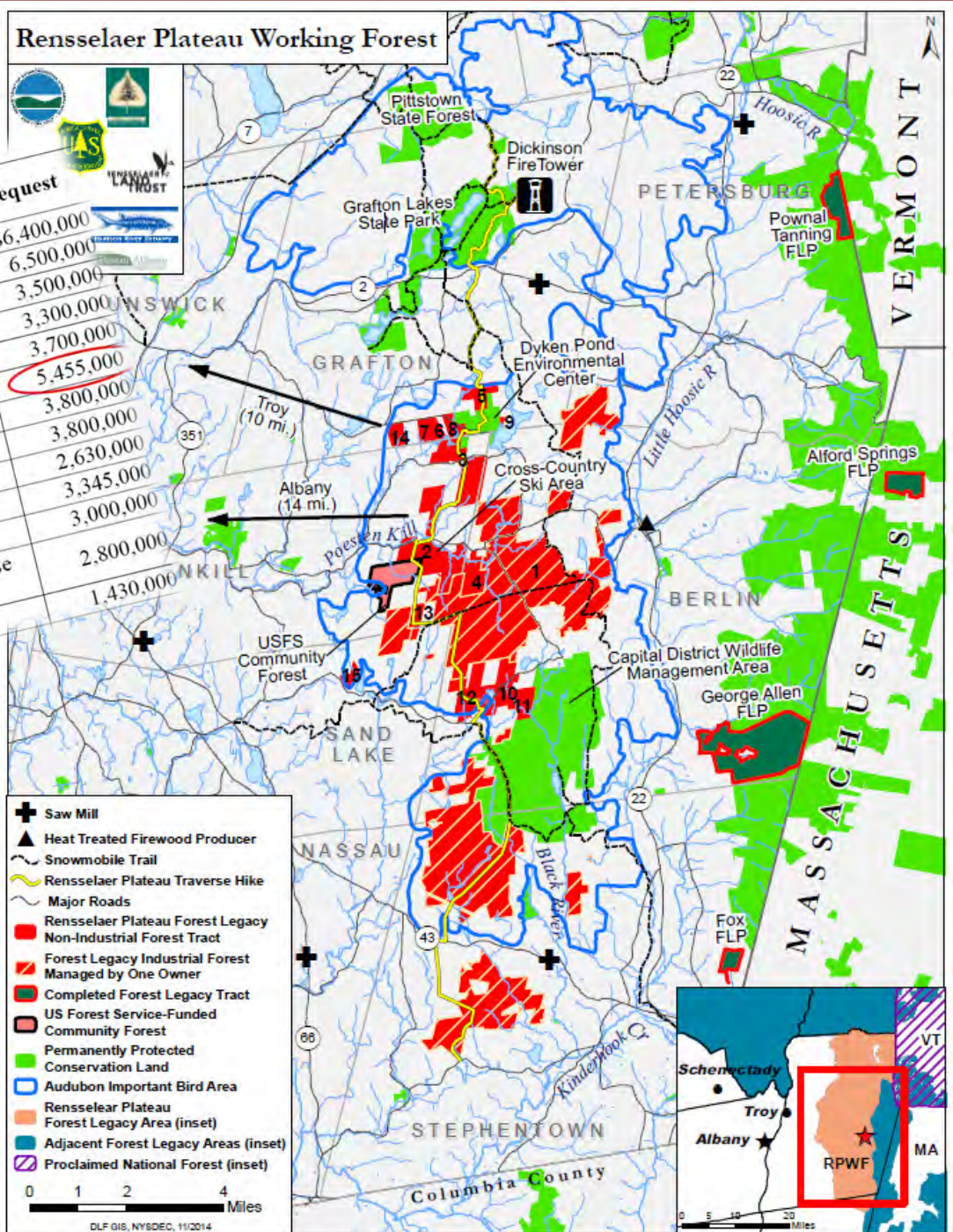


2012 - 2013



2014 (FY16)

Priority Rank	State	Project Name	Request
1	MT	Trumbull Creek Watershed	\$6,400,000
2	GA	Lentile Longleaf Pine Tract	6,500,000
3	ID	Hall Mountain-Kootenai Valley	3,500,000
4	FL	Silver Springs Watershed	3,300,000
5	NY	Rensselaer Plateau Working Forest	3,700,000
6	ME	Big Six Forest	5,455,000
7	WA	Mt. St. Helens Forest Phase 2	3,800,000
8	UT	Zion-Orderville Gulch	3,800,000
9	TN	Sherwood Forest	2,630,000
10	OR	East Moraine Wallowa Lake	3,345,000
11	NC	East Fork of French Broad Headwaters Phase III	3,000,000
12	CT	Whip-Poor-Will Woods (WPWW)	2,800,000





COLD HOLLOW WOODLOTS

You only....

See what you know

Love what you see

Protect what you love



Woodlot Program Essentials

Engaging landowners with contiguous or nearly contiguous forested properties

Coalescing Interest

Focusing diverse management activities on a landscape scale

Tell the Story

Peer-to-Peer collaborations

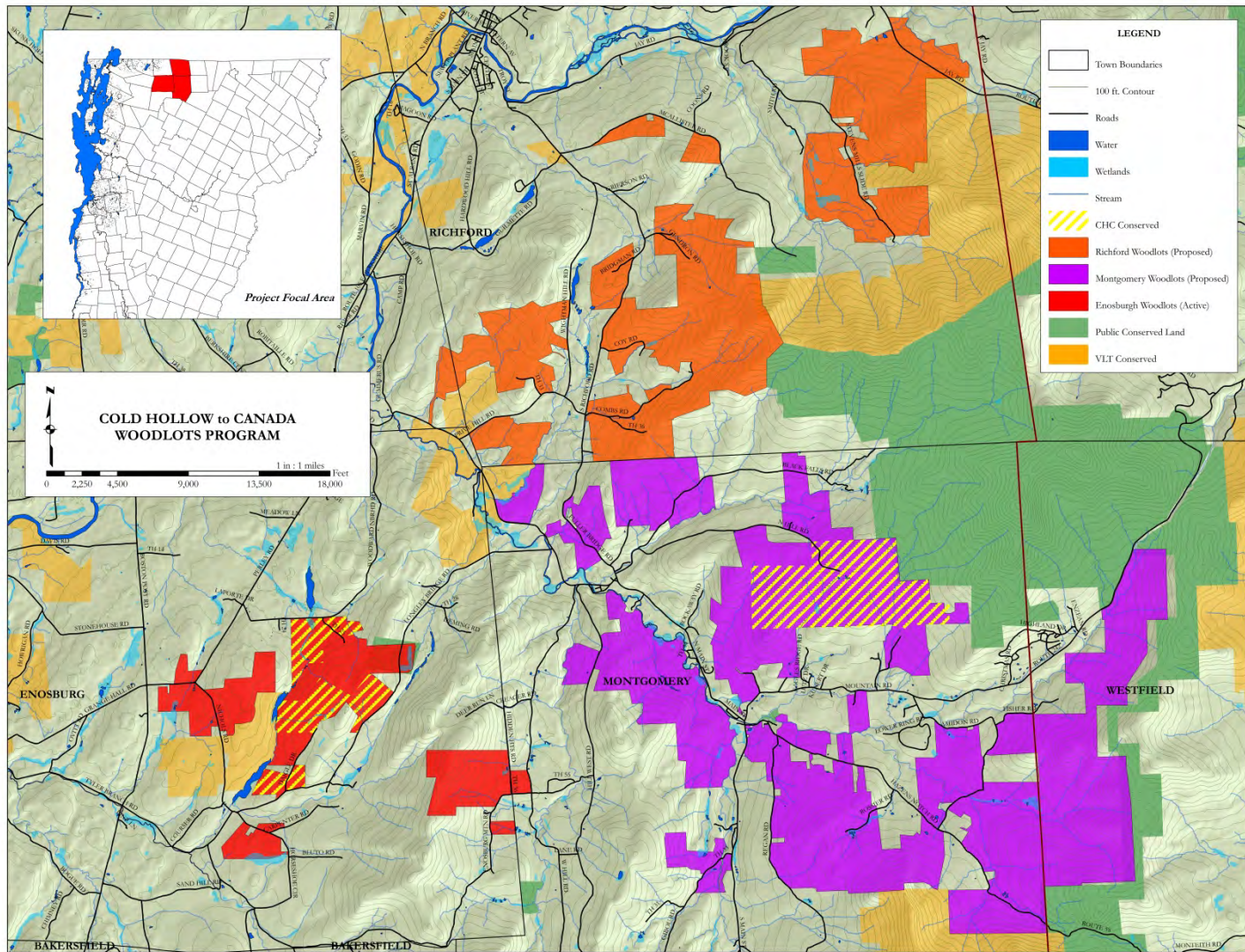
Trust Building

Quarterly Gatherings

Sustained Engagement

Fostering a greater commitment to permanent conservation of a shared landscape....***accelerating the Pace of Conservation and Impact of Stewardship***





**Conservation
Easements**

**Piolet Project:
4 Properties
650 Acres**

**Phase 2:
1 Anchor Parcel
1,100 Acres**



COLD HOLLOW TO CANADA



www.coldhollowtocanada.org

Discussion

