

Session #2, Workshop A.
“How to be an Effective RCP Coordinator”

A Coordinator’s Role in a Mature RCP

By Brian Hotz
Presentation to the 2015
RCP Network Gathering
Nashua, NH



The Q2C Partnership:

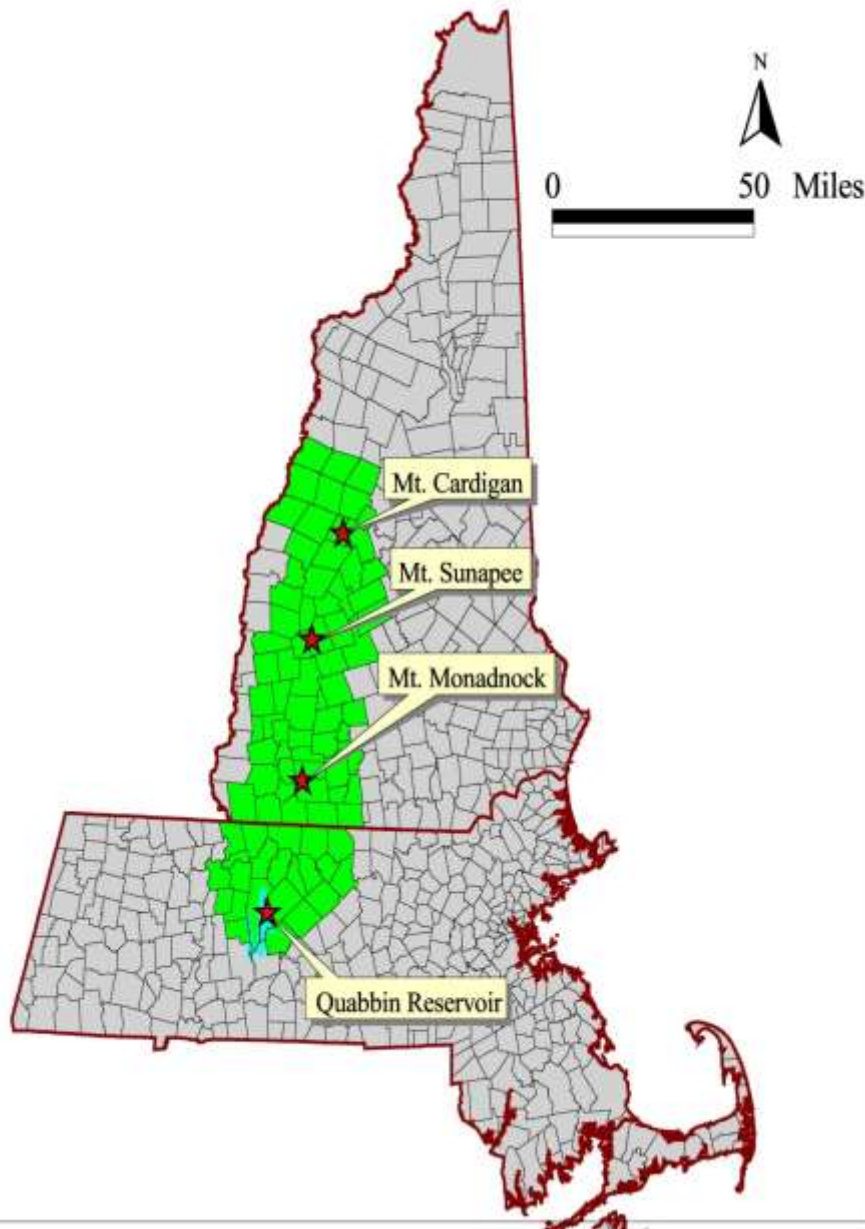
A public-private effort to conserve the region



- Launched in 2003 with help from LTA, SPNHF has coordinated since 2004.
- 27 non-profits and public agencies in two states;
- Partners collaborate & coordinate on project finance, communications, conservation planning, transaction work.
- Partnership endorses and packages projects for Forest Legacy
- Transaction and trail grants program.

REGIONAL CONTEXT:

- Two-state region bounded by Quabbin Reservoir in the south, Mount Cardigan and WMNF in the north.
- 2 million acres, or 3,000 sq. miles. 85 municipalities
- The region is one of the largest remaining areas of intact forest in central New England, and is a key headwater of both the Merrimack and Connecticut rivers.



The Quabbin to Cardigan Conservation Plan

- Adopted in June, 2007.
- 587,000 acres of core “conservation focus areas” - the region’s most ecologically-significant forest blocks. 418,000 acres of “supporting landscapes,” that buffer and link core areas.
- Core Q2C conservation focus areas are about 30% of the two million-acre region, and were 39% protected in 2007.
- Supporting landscapes are another 21% of the region, and were 26% protected in 2007.

Quabbin to Cardigan Partnership Conservation Focus Areas

Map prepared by the
Society for the Protection of NH Forests
Research Department

- Q2C Boundary Area
- Q2C Conservation Core Focus Areas
- Q2C Supporting Landscapes
- State Line
- Town Boundaries
- Long Distance Trails
- Surface Water Bodies
- Conservation Land

DATA SOURCES

Most of the data depicted here is from digital data from the Office of Geographic and Environmental Information (GeoEIT), Massachusetts Department of Environmental Protection (Mass DEP), and the U.S. Geological Survey (USGS). Other data sources include: Computerized Forest Inventory (CFI) of the University of New Hampshire.

USGS (USDT, 1981) and USGS (USDT) are a continuing program to identify and record water resources (USGS) Office of State Planning, Analysis and the computerized water resources data system in the state or available to the public, regardless of their data.

USGS (USDT) and USGS (USDT) are a continuing program to identify and record water resources (USGS) Office of State Planning, Analysis and the computerized water resources data system in the state or available to the public, regardless of their data.

USGS (USDT) and USGS (USDT) are a continuing program to identify and record water resources (USGS) Office of State Planning, Analysis and the computerized water resources data system in the state or available to the public, regardless of their data.

USGS (USDT) and USGS (USDT) are a continuing program to identify and record water resources (USGS) Office of State Planning, Analysis and the computerized water resources data system in the state or available to the public, regardless of their data.

USGS (USDT) and USGS (USDT) are a continuing program to identify and record water resources (USGS) Office of State Planning, Analysis and the computerized water resources data system in the state or available to the public, regardless of their data.

USGS (USDT) and USGS (USDT) are a continuing program to identify and record water resources (USGS) Office of State Planning, Analysis and the computerized water resources data system in the state or available to the public, regardless of their data.

USGS (USDT) and USGS (USDT) are a continuing program to identify and record water resources (USGS) Office of State Planning, Analysis and the computerized water resources data system in the state or available to the public, regardless of their data.

USGS (USDT) and USGS (USDT) are a continuing program to identify and record water resources (USGS) Office of State Planning, Analysis and the computerized water resources data system in the state or available to the public, regardless of their data.

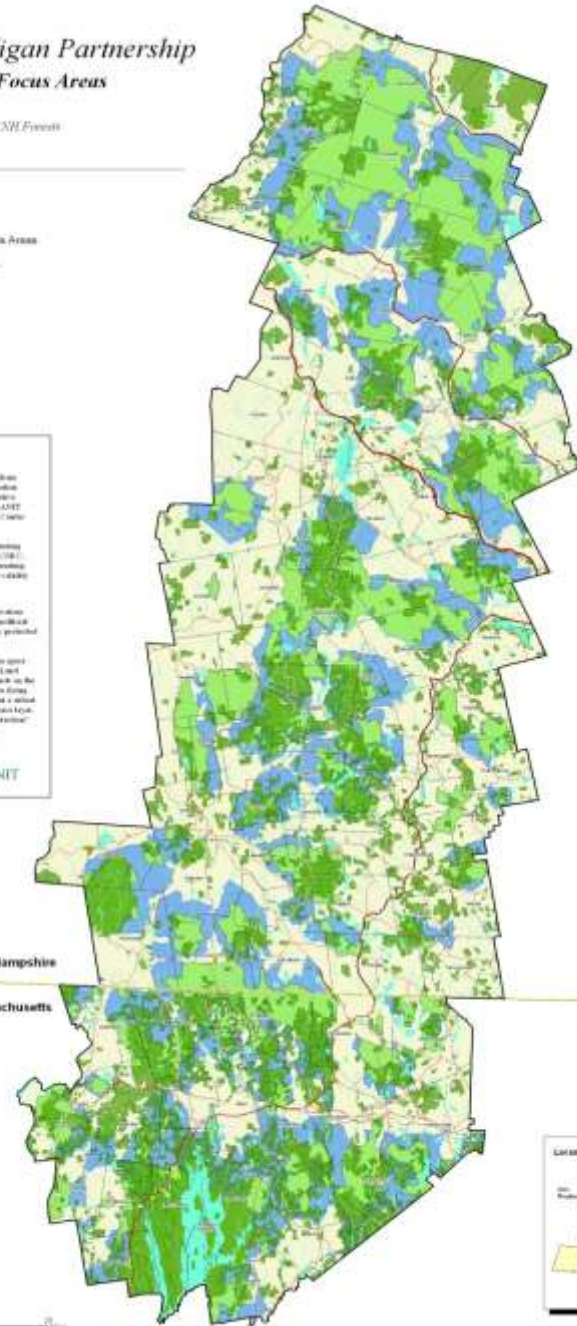
USGS (USDT) and USGS (USDT) are a continuing program to identify and record water resources (USGS) Office of State Planning, Analysis and the computerized water resources data system in the state or available to the public, regardless of their data.

USGS (USDT) and USGS (USDT) are a continuing program to identify and record water resources (USGS) Office of State Planning, Analysis and the computerized water resources data system in the state or available to the public, regardless of their data.

USGS (USDT) and USGS (USDT) are a continuing program to identify and record water resources (USGS) Office of State Planning, Analysis and the computerized water resources data system in the state or available to the public, regardless of their data.

USGS (USDT) and USGS (USDT) are a continuing program to identify and record water resources (USGS) Office of State Planning, Analysis and the computerized water resources data system in the state or available to the public, regardless of their data.

USGS (USDT) and USGS (USDT) are a continuing program to identify and record water resources (USGS) Office of State Planning, Analysis and the computerized water resources data system in the state or available to the public, regardless of their data.

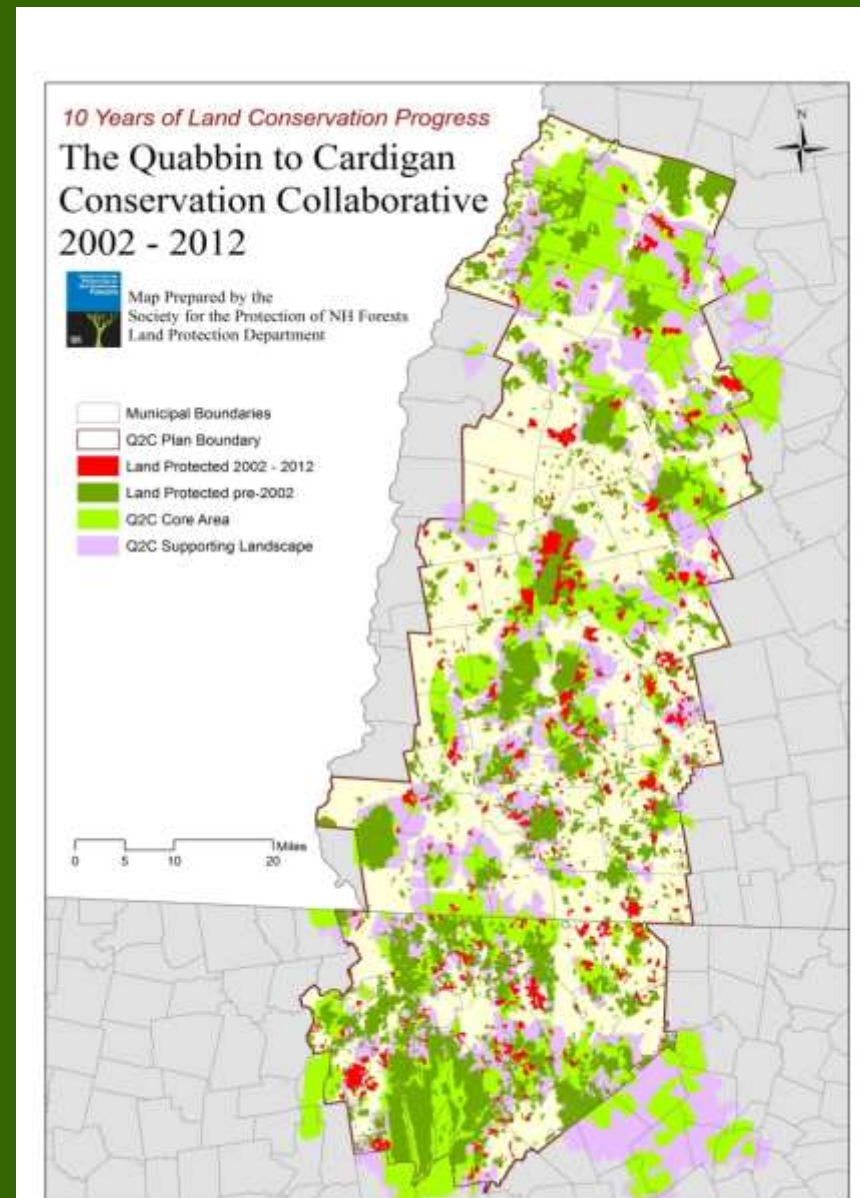


A Mature RCP

Launched in 2002, the Q2C Partnership is turning 13 years old:

- Over the formation phase
- Developed a conservation plan
- Partners have been completing projects targeted at implementing the conservation plan for 13 years

In the first ten years, the Q2C partners helped permanently protect an additional 90,000 acres of land in the region - 62,000 acres in New Hampshire and 28,000 acres in Massachusetts



Surviving Change in Partner Personnel and even the RCP's Coordinator

- Try not to lose institutional knowledge
 - Have overlap of incoming and out going personnel at meetings.
 - Write down the history of the RCP and who has been involved.
 - Keep meeting notes, agenda, presentation.. in a location where every partner can access them (drop box, website).
- Try not to loose personal relationships with the partners
 - Get to know your partner representatives.
 - Have at least some face to face partnership meeting
- Keep to a similar meeting schedule and partner communications routine.

Help make connections between the Partners

- Encourage partner to partner cooperation
- Recognize partner opportunities
- Pass on insights, lessons learned to new representatives (new ED, land agents, communications staff...)
- Bring in new partners to the partnership

Add Value to the Partnership

- Land transactions & trails grant programs
- Posting partner success stories to a web & Facebook
- Assist partners with outreach activities & outreach materials about the partnership

Assist the Partnership in new Initiatives Beyond Land Protection

- Advocacy for funding programs
- Influencing municipal regulations
- Conducting research which will benefit the partners

You Can't do it Alone!!!!!!!!!!!!!!!!!!!!!!

- A good coordinator ask partners for advice and help with RCP activities.
- You will need technical assistance for GIS, Web Sites, Outreach Materials.....
- Don't become the only representative of your RCP – involve the partners in representing the RCP.