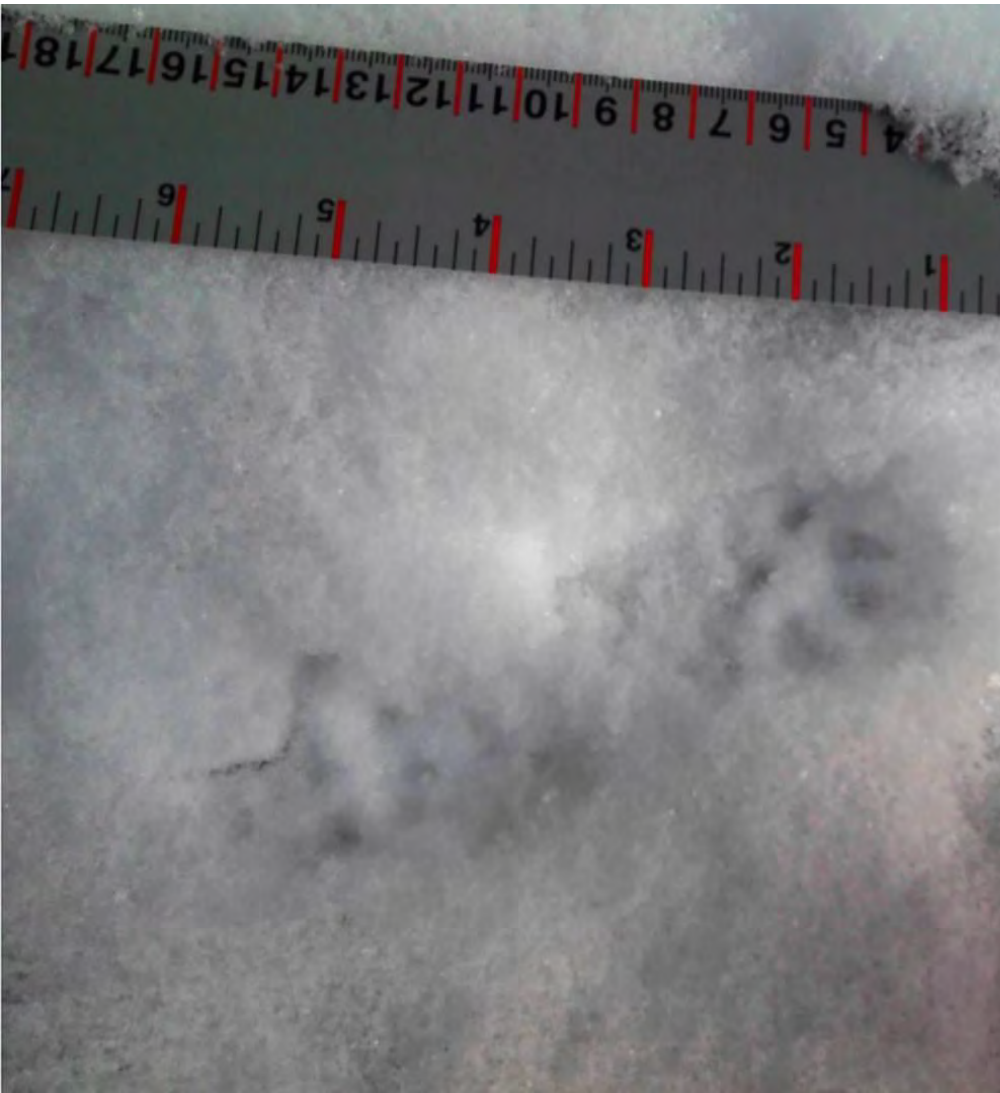


Key lesson we are learning:
Combine cameras with other methods



SCI Resources

stayingconnectedinitiative.org





Resources

The Staying Connected Initiative has a wide-variety of resources that will help you and your community learn about that Northern Appalachian/Arcadia region, issues associated with landscape and habitat connectivity, and the steps you and your community can take to protect wildlife and natural spaces.

On this page:

- [General Staying Connected Initiative Information](#)
- [Tools](#)
- [Maps](#)
- [Articles and Reports](#)
- [SCI Newsletter Archive](#)

General Staying Connected Initiative Information

[About the Staying Connected Initiative \(2 page PDF\)](#)

[About the Staying Connected Initiative \(2 page PDF in French\)](#)

[An Introduction to the Staying Connected Initiative \(poster\)](#)

[Receive Our Newsletter](#)

[Join Our Listserv](#)



Thank You / Q&A



For more information:

Web: stayingconnectedinitiative.org

Email: jlevine@tnc.org

Wildlands Network founded 1991
with the mission of protecting
biodiversity.

- * connectivity – continental scale
- * keystone species – restore, protect
- * restoration – habitat and species















Split Rock Wildway



-  Split Rock Wildway
-  Wisconsin, Federal, and BLM Forest Land 2011

* Administration provided by the Wisconsin Dept. of Natural Resources for maintenance purposes only.



MOULTRIE  33°F 29.49inHg **MOULTRIECAM** 23 JAN 2015 05:01 pm



MOULTRIE



24°F 29.91inHg

MOULTRIECAM

06 APR 2016 06:58 am



MOULTRIE  19°F 29.02inHg **MOULTRIECAM** 14 DEC 2014 07:10 am



MOULTRIE



55°F 28.97inHg

MOULTRIECAM

05 JAN 2012 02:35 pm



MOULTRIE



22°F 29.88inHg

MOULTRIECAM

22 FEB 2016 04:01 pm



MOULTRIE  33°F 29.69inHg MOULTRIECAM 14 JAN 2015 04:10 pm



MOULTRIE



30°F 29.51inHg

MOULTRIECAM

30 MAR 2015 06:54 am



MOULTRIE



43°F 29.00inHg

MOULTRIECAM

02 OCT 2015 07:24 pm





What Does a Connected and Biodiverse Regional Landscape Look Like?

Studying connectivity in highly fragmented landscapes

This presenter asked that we not publish his slides. Please contact him for further information.



Chris Nagy
Mianus River Gorge
Bedford, NY

