



**YOU LIVE IN A
SPECIAL PLACE**
FIND OUT WHY

SUNDAY, AUGUST 9TH • 10-11:30AM



SUNDAY, SEPTEMBER 20TH • GOT BIRDS?

JOIN US & DISCOVER
WHOOOOO SHARES YOUR BACKYARD!

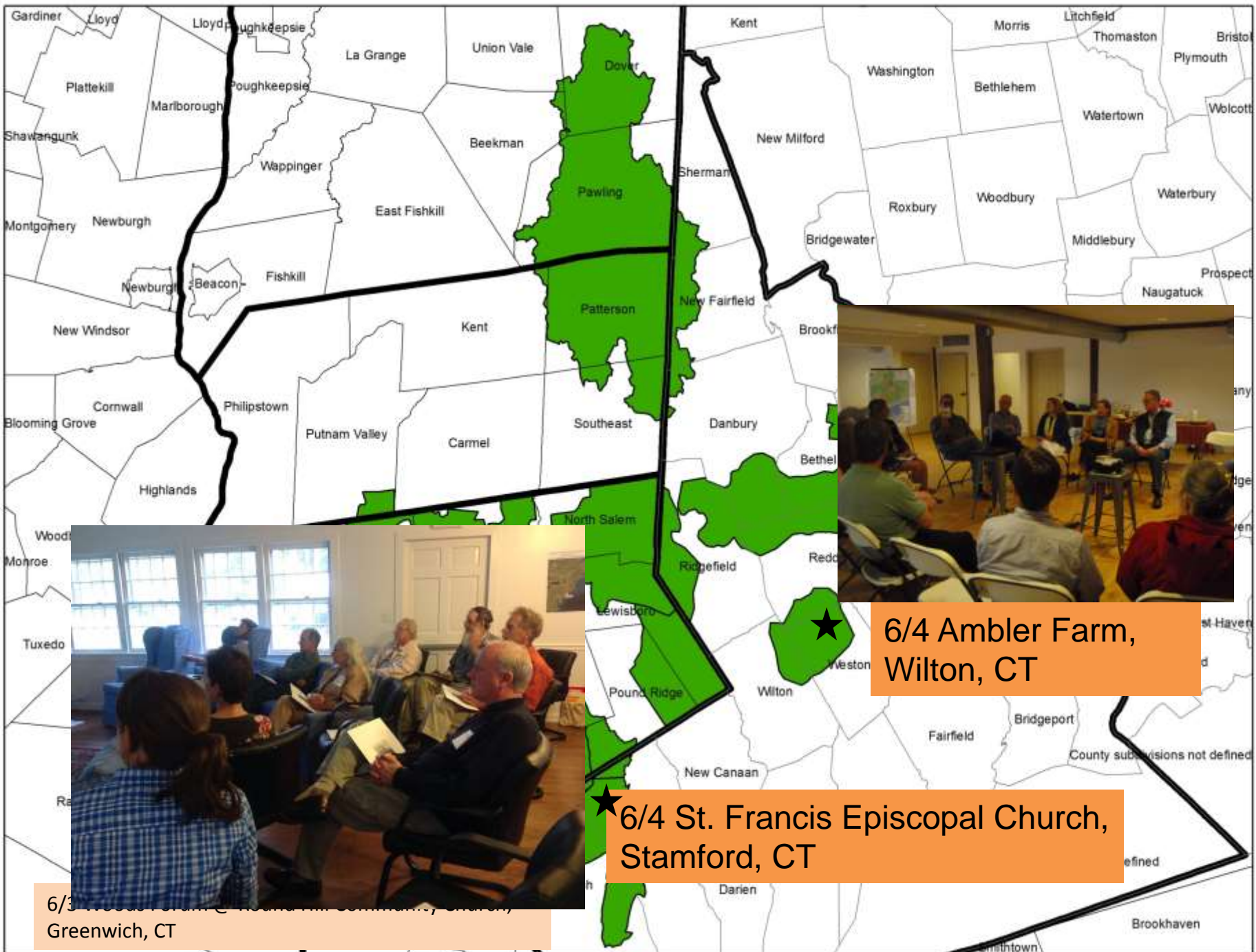


GUIDED STREAM WALK AT ANGLE FLY PRESERVE • SUNDAY, JULY 12TH

**DISCOVER THE WATERWAYS THAT
MAKE OUR COMMUNITY UNIQUE**



**WHAT'S GOING ON
IN YOUR BACKYARD?**



6/4 Ambler Farm, Wilton, CT



6/4 St. Francis Episcopal Church, Stamford, CT

6/3 ... Greenwich, CT



7/12 - Akin Free Library
Patterson, NY

7/26 - Holcomb Hill Nature Preserve
Newtown, CT

7/12 - Angle Fly Preserve
Somers, NY

H2H reached out to 3,393 landowners!



6/4 - Ambler Farm
Wilton, CT

6/20 - Pound Ridge Library
Pound Ridge NY

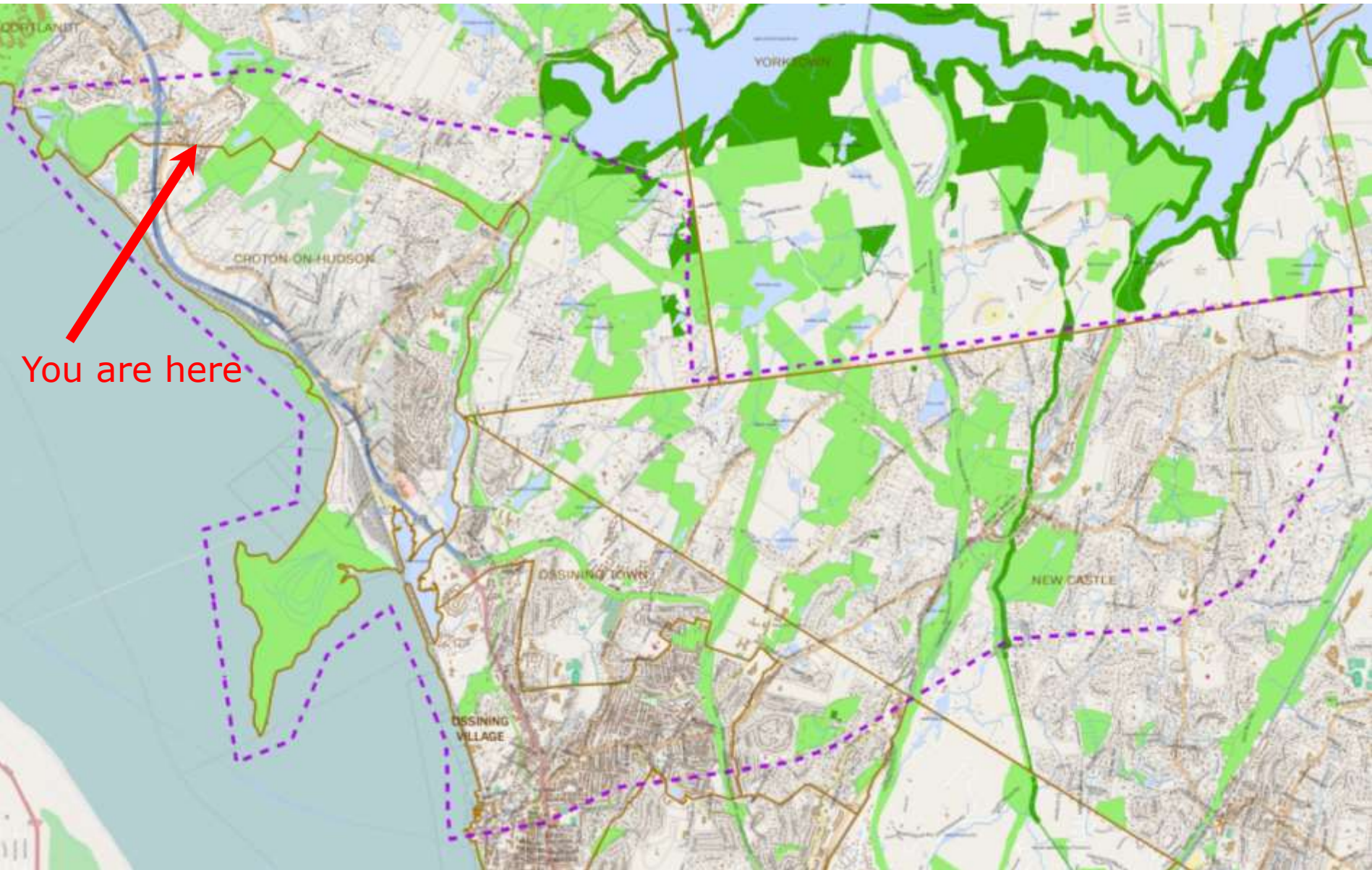
5/28 - Westmoreland Nature Sanctuary
Mt. Kisco, NY

6/3 - Round Hill Community Church
Greenwich, CT

6/4 - St. Francis Episcopal Church
Stamford, CT

Rivertowns Focal Area: Neighborhood Gathering Private Home, Ossining, NY





You are here



You make a
difference.

Your land is
important.

- We have identified neighborhoods with healthy habitats for: people, sustainable woods, clean water and quality wildlife habitat
- Your land is special and has qualities that may be resistant to changes in the climate.

Together we are the key

to protecting and connecting wooded landscapes:

by **recognizing the connections**

that already exist

across the landscape,

by **choosing how we enhance**

and protect our properties...for the future.



H2H Landowner Recruitment

- What worked well?
 - Personal invitations
 - In some focal areas, ambassadors' social network
- What didn't work well?
 - Low response rate to postcards
 - “Cold” follow up phone calls, emails



H2H Landowner Events

- What worked well
 - Having landowners in attendance who were willing to share
 - Having experts available
 - Steps towards getting to know what our landowners' needs are
 - A fun, social atmosphere. Landowners want to get to know their neighbors.
- What didn't work well
 - Difficult to get landowner feedback re: what they use their land for
 - In some focal areas, landowners did not open up, making it difficult for peer-peer learning.



Challenges and opportunities for applying GIS to on-the-ground action

CHALLENGES/LIMITATIONS	OPPORTUNITIES
Compiling up to date protected area shapefiles and assessor lists - data in flux	New relationships forged with GIS professionals throughout region Opportunity to spread info and increase support for H2HRCP
Data was collected differently from state to state, county to county - makes comparisons across these boundaries difficult	Better understanding of different regional priorities and info gaps Allowed for customization/innovation
Getting partners comfortable with new mapping approach	Regional organizations with capacity provide training and consulting to local organizations with limited resources.

Challenges and opportunities for applying GIS to on-the-ground action (continued)

CHALLENGES/LIMITATIONS	OPPORTUNITIES
<p>Model is just a tool limited by factors put into it</p> <p>Sometimes the datasets aren't accurate – hard for partners to move beyond errors on map</p>	<p>Partners feel empowered to ground-truth, spot-check and provide valuable info to correct or reinforce the output</p>
<p>Model doesn't always identify parcels of land that are acquisition priorities for partner organizations</p>	<p>Land acquisition priorities both confirmed and challenged by process - opportunity to re-evaluate and discuss</p>
<p>Model identifies priority parcels – and partner organizations may not have strong relationships with those landowners</p>	<p>Shift engagement approach to work through existing networks and neighborhood groups.</p>

QUESTIONS?

