

DIVISION OF CONSERVATION SERVICES

Drinking Water Supply Protection Grant Program

Summary of MA Water Supply Protection – A Daunting Challenge

- **Water Supply Protection Zones – Public Wells (1/3 of supplies):**
 - There are 461,527 acres that drain to public wells (Zone II's) of which 112,347 is protected land (24%) and 349,180 acres is unprotected.
- **Water Supply Protection Zones – Public Reservoirs (2/3 of supplies):**
 - There are 549,014 acres that drain to public reservoirs (Zones A, B, and C) of which 258,609 (47%) is protected and 290,405 acres unprotected. Of this figure, 107,843 acres of unprotected zones are in the DCR/MWRA system and 182,562 acres are in the rest of the public systems.



Massachusetts Water Supply Protection Initiatives

- Drinking Water Protection Grants in partnership with RCP's
- Leveraging Protection and Public Access on Existing Water Supply Lands
- Leveraging Water Utility Funding
- Conserving drinking water lands via other programs



Grants - Ten Years of Accomplishments

- Since 2005, MA has awarded 56 Drinking Water Grants totaling \$13.2 million that protected 3,053 acres and leveraged \$32.3 million non-state funds and gifts – most grants involve land trusts



Drinking Water Supply Protection Grant Program

Eligible applicants: municipal public water suppliers and water/fire districts

Eligible projects: land acquisition

Maximum award: \$350,000

Reimbursement rate: 50%

Land acquisition: eligible interests

- Fee simple
- Conservation Restriction (CR)
- Watershed Preservation Restriction (WPR)



DWSP Grant pays for:

- Acquisition
- Recording fees
- Title research and certification
- Property survey
- Baseline Documentation Report & Land Management Plan

Application contents

- Appraisal
 - ▶ TWO appraisals if the first is $> \$750,000$
- Maps
- Itemized budget
- Project narrative
- Supporting plans and documentation



Evaluation procedure

- In-person site visit
- Rating system
- Funded according to ranking



Evaluation criteria

- **Demographics**

 - Population served

 - Environmental Justice

- **Resource Management**

 - Rate of water use

 - % unaccounted for water

 - Water rate structure

- **Project Quality**

 - Importance (differs by project type)

 - Resource protection (current zoning, level of threat, planned)

- **Size**

- **Public access**

EEA Agency Water Supply Projects

- MA DCR and DFG have purchased Conservation Restrictions over city water supply lands that increase protection and allow passive recreation with payments often used by city's to protect more water supply land.
 - Fitchburg – 1,800 acres
 - Fall River – 4,200 acres
 - New Bedford – 3,100 acres
 - Clinton – 500 acres
 - In process: Leominster, Fitchburg, Worcester
- Old mill cities often have the best water supplies!

Other state programs may protect water supply lands

□ **LAND grant**

For: conservation commissions

To: acquire land/CRs

Max award: \$400,000

Application due: summer

□ **Landscape Partnership grant**

For: conservation commissions, water departments, non-profits, and state and federal agencies

To: acquire 500+ acres land/CRs/APRs/WPRs

Max award: \$1,500,000

Application due: summer/fall

□ **Conservation Partnership grant**

For: non-profits

To: acquire land/CRs

Max award: \$85,000

Application due: summer

□ **Land and Water Conservation Fund (LWCF) grant**

For: conservation commission/parks depts

To: acquire land/CRs; develop parks

Max award: \$ varies

An aerial photograph showing a large, dark blue reservoir in the center, surrounded by dense, brownish-red forest. In the foreground, a town with a grid street pattern, buildings, and sports fields is visible. A highway with a complex interchange runs across the middle ground. The background shows more forested hills under a clear sky.

Fall River Bioreserve – 8,000 acres protected with \$14 million from state , city, land trust portions

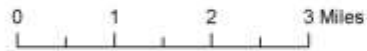
Fitchburg – DFG recorded easement over 1,800 acres with new trails and stewardship and City utilized funding to leverage a state grant and Forest Legacy on new parcels – creating a greenway from City Common to NH in partnership with North County Land Trust



Fitchburg Water Supply Lands Conservation Project and Vicinity

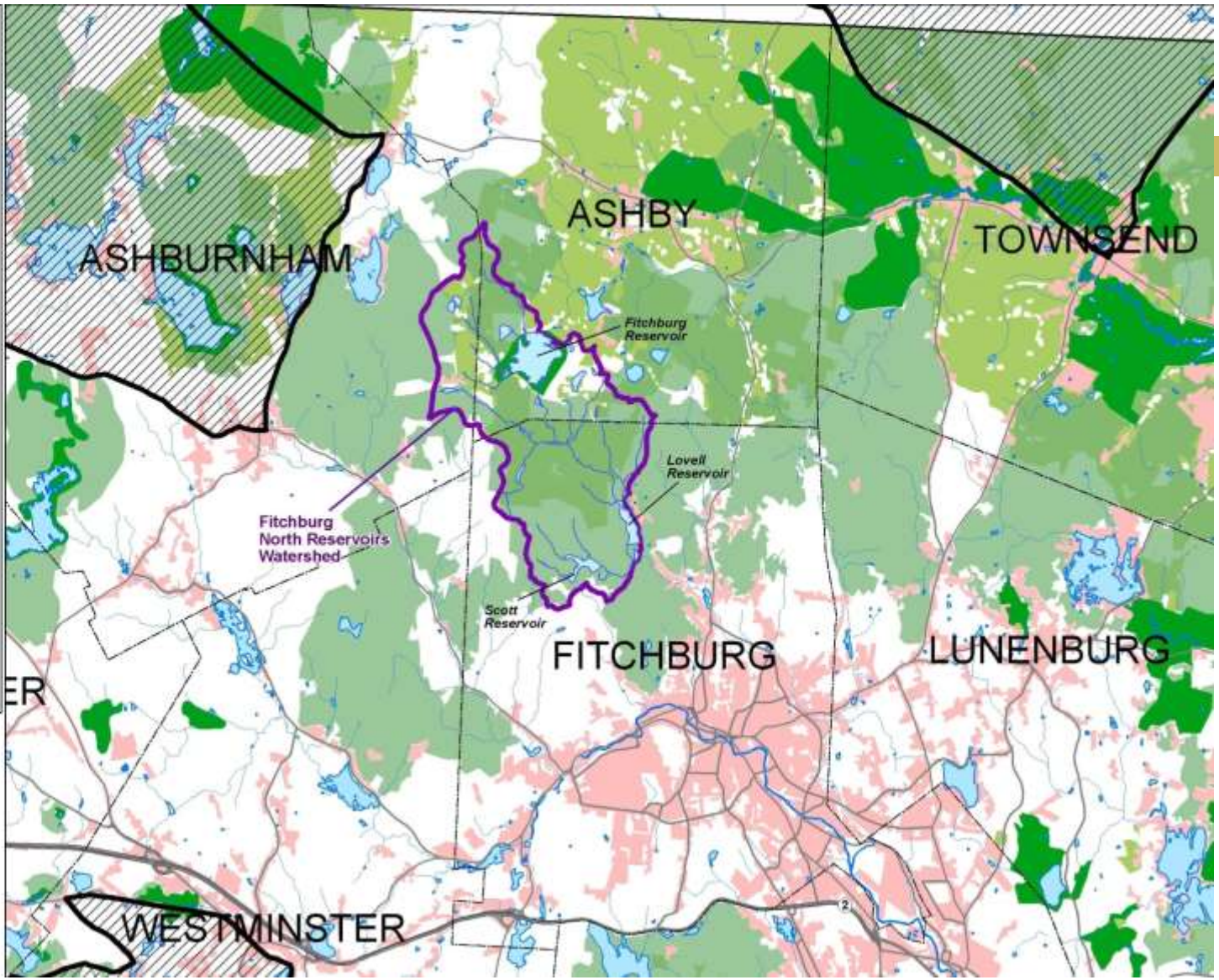
Legend

-  Watershed for City of Fitchburg Reservoirs (DEP Zone C)
-  BioMap Core Habitat
-  BioMap Supporting Natural Lands
-  State Land Conserv. Plan, 2004
-  TNC Forest Matrix
-  Medium and High Density Development
-  Major Roads



All data displayed on this map were acquired through MassGIS

Map produced by:
The Trustees of Reservations
with North County Land Trust
April 30, 2008



Emmanuel Owusu

(617) 626-1187 or emmanuel.owusu@state.ma.us

**Application materials late spring 2016 at:
www.mass.gov/eea/dcs-grants or www.commbuys.com**

