

# Public Water Supply Land: What do you mean this isn't a park?!?

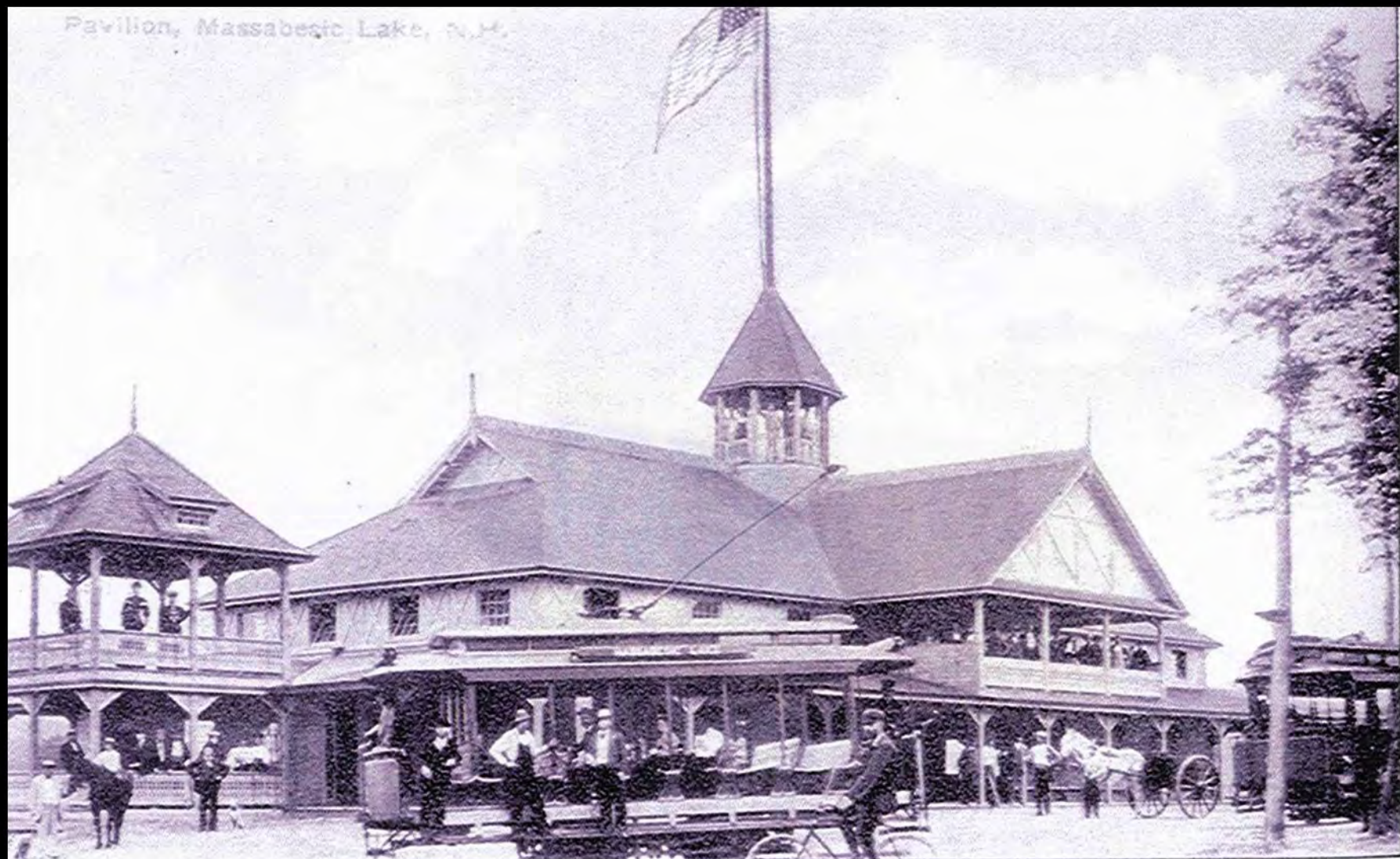


John O'Neil  
Watershed  
Forester

Manchester  
Water Works

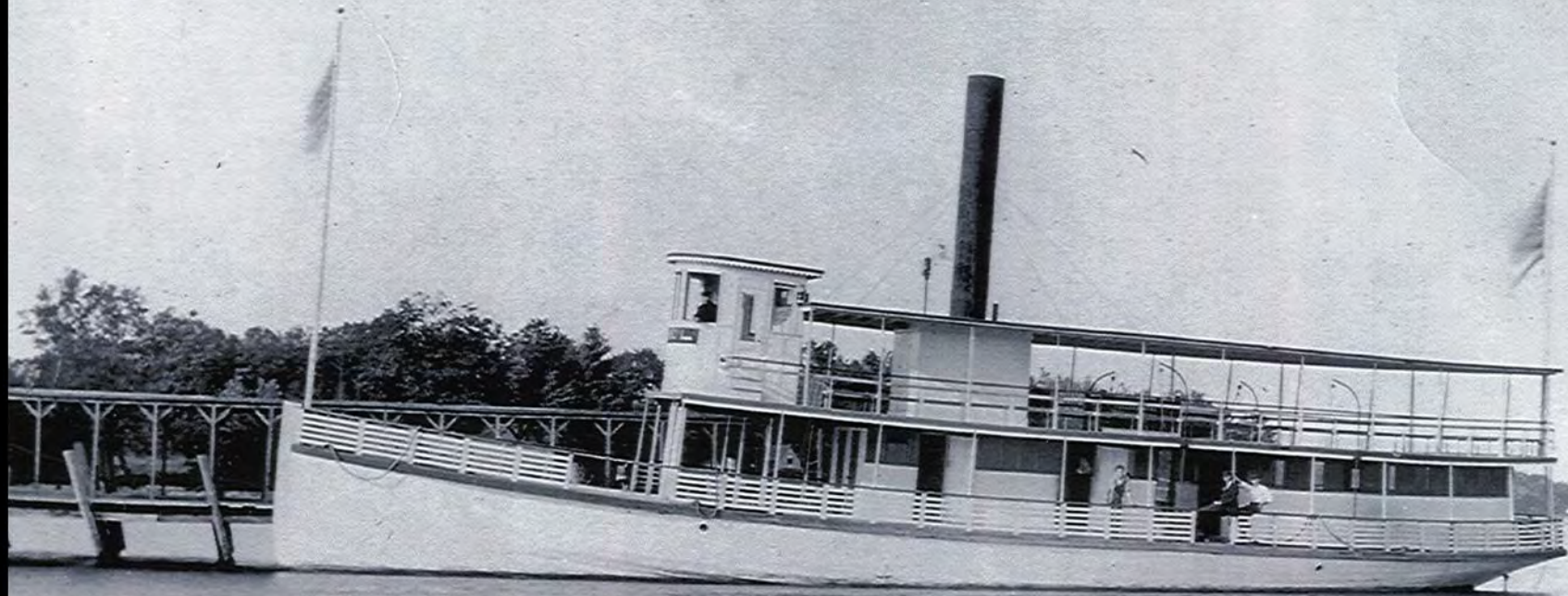
Manchester, NH

Pavilion, Massabesic Lake, N.H.



This pavilion was constructed by the Manchester Street Railway in 1896 in the Trolley Block to stimulate pleasure riding on the Massabesic Lake line. A theater opened in 1899 and was enlarged in 1900; both it and the pavilion burned on July 28, 1932.





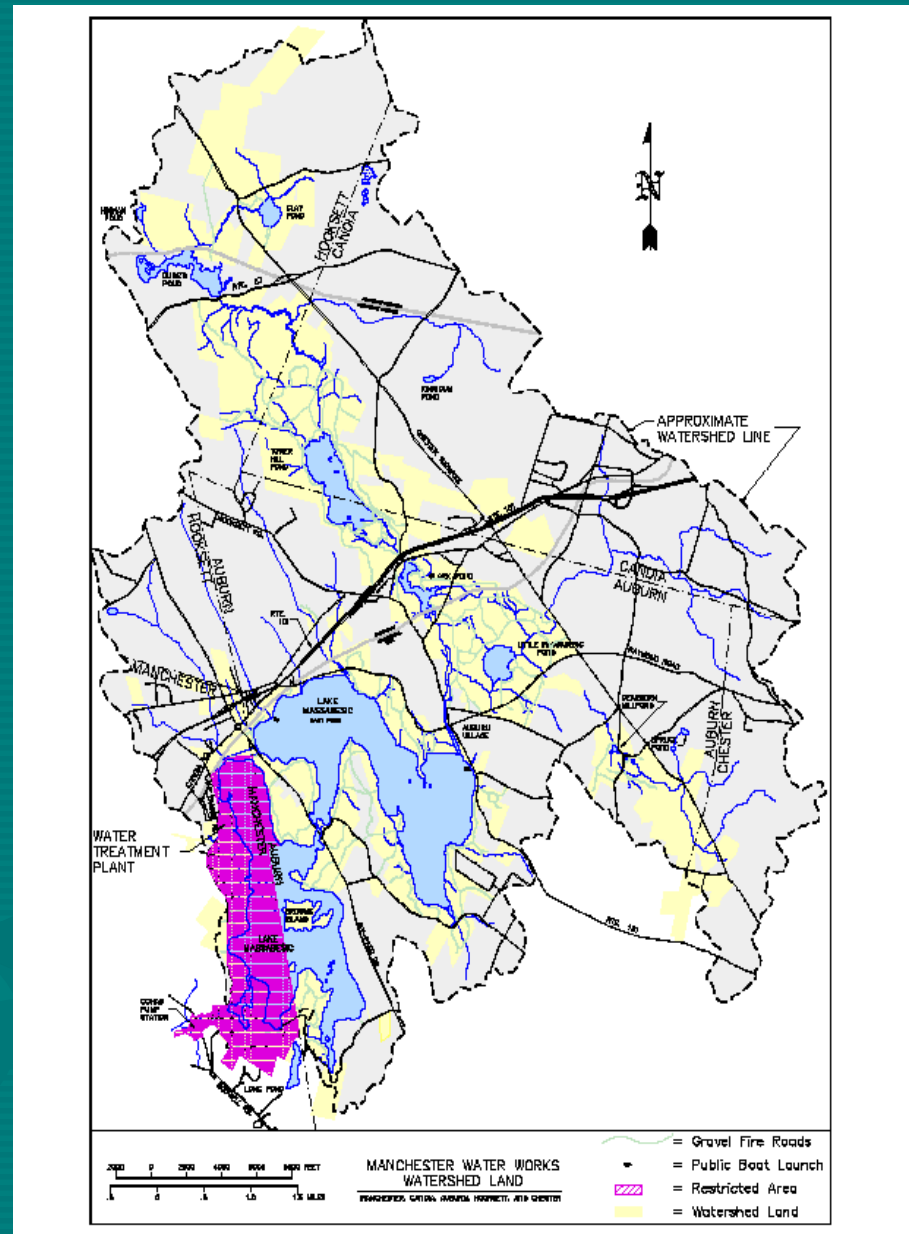




# 1899 Swimming Restriction



- 8000 Acre Land Ownership for Watershed Protection
- Adjacent to largest City in NH.
- 50 miles of “Fire Roads” around lakes/ponds.
- Bisected by the Rockingham Recreation Trail.





# New Age of Recreation



# Traditional use?

















# What about the lake?











# Always a new thing



# Human Impact





# Solutions



- Education
- Information
- Cooperation
- Legislation
- Enforcement
- Consistency

●

**TRAIL USE  
IS A PRIVILEGE.  
PLEASE CARRY  
IN/CARRY OUT.  
LEAVE NO  
TRACE BEHIND.**

**MANCHESTER WATER WORKS**

●



# Massabesic Recreational Leadership

- FOMBA (Friends of Massabesic Bike Association). Eastern Fat Tire, NEMBA.
- Southern NH SnoSlickers Snowmobile Club
- Ride Free Massabesic .
- Manchester Animal Shelter.
- Dog Mushers
- NH Fish and Game

# NEWMAN?



- New
- England
- Water Supply
- MANagers
  
- Collaborative



**ATTENTION BOATERS**

Please observe Manchester Water Works Watershed Rules RSA 485:2 regarding Making Bodily Contact with Lake Massabesic or any pond, reservoir, or stream tributary.

**RUBBER BOOTS SHOULD BE WORN WHENEVER LAUNCHING OR REMOVING A VESSEL FROM LAKE MASSABESIC OR ANY POND, RESERVOIR, OR STREAM TRIBUTARY THERE TO, INCLUDING KAYAKS.**

Thanks for your cooperation in protecting our drinking water supply.  
Manchester Water Works

**MASSABESIC LAKE WATER SUPPLY**

**NO WADING**  
**NO SWIMMING**  
**NO FIRES**

CHAP. 485 REVISED LAWS NH

**KAYAK USERS**

No Part of Your Body can Touch the Water.

**USE RUBBER BOOTS.**

Thanks for your cooperation.  
Manchester Water Works  
281 Lincoln St. Manchester, NH

**POSTED RULES**

FOR THE PROTECTION OF THE QUALITY OF THE WATER AND SOLE OF LAKE MASSABESIC AND THE USE OF THE WATERSHED PROPERTY, THESE RULES WILL BE ENFORCED BY THE MANCHESTER WATER WORKS. THIS IS A PUBLIC WATER SUPPLY. PLEASE KEEP IT CLEAN.

PLEASE RESPECT THE PRIVILEGE TO USE THIS PROPERTY WITH MINIMAL DISTURBANCE.

RECREATIONAL USE OF THIS PROPERTY SHALL BE AT YOUR OWN RISK.

DOGS AND HORSES ARE NOT ALLOWED ON BIOPHES OR IN THE WATER.

PETS MUST BE ON A LEASH AND UNDER CONTROL AT ALL TIMES.

DOG OWNERS MUST PICK UP (SAG) AND PROPERLY DISPOSE OF DOG WASTE.

HORSES MUST BE EQUIPPED WITH A DEVICE TO COLLECT WASTE AS IT IS PRODUCED WHICH SHALL THEN BE PROPERLY DISPOSED OF OFF MANCHESTER WATER WORKS PROPERTY.

THESE RULES ARE STRICTLY ENFORCED AND VIOLATORS WILL BE PROSECUTED IN ACCORDANCE WITH RSA 432:2.

ISSUED BY:  
MANCHESTER WATER WORKS  
281 LINCOLN STREET  
MANCHESTER, NH

**POSTED**

PROTECTED DRINKING WATER SUPPLY AREA

PLEASE RESPECT THE PRIVILEGE TO USE THIS PROPERTY WITH MINIMAL DISTURBANCE.

RECREATIONAL USE OF THIS PROPERTY SHALL BE AT YOUR OWN RISK.

DOGS AND HORSES ARE NOT ALLOWED ON BIOPHES OR IN THE WATER.

PETS MUST BE ON A LEASH AND UNDER CONTROL AT ALL TIMES.

DOG OWNERS MUST PICK UP (SAG) AND PROPERLY DISPOSE OF DOG WASTE.

HORSES MUST BE EQUIPPED WITH A DEVICE TO COLLECT WASTE AS IT IS PRODUCED WHICH SHALL THEN BE PROPERLY DISPOSED OF OFF MANCHESTER WATER WORKS PROPERTY.

THESE RULES ARE STRICTLY ENFORCED AND VIOLATORS WILL BE PROSECUTED IN ACCORDANCE WITH RSA 432:2.

ISSUED BY:  
MANCHESTER WATER WORKS  
281 LINCOLN STREET  
MANCHESTER, NH

**NO PARKING BETWEEN SIGNS**

→

**TRAIL USE IS A PRIVILEGE. PLEASE CARRY IN/CARRY OUT. LEAVE NO TRACE BEHIND.**

MANCHESTER WATER WORKS

# Participants in NEWMAN Collaborative

- City of Montpelier (VT)
- City of Keene (NH)
- Manchester Water Works (NH)
- York Water District (Maine)
- Kittery Water District (Maine)
- Portland Water District (Maine)
- Kennebunk , Kennebunkport, Wells Water District (Maine)
- Cambridge, MA
- Amherst, MA
- MA Department of Conservation & Recreation, Quabbin Reservoir
- Northampton, MA
- Worcester, MA
- The Metropolitan District, (Hartford), CT
- Regional Water Authority (New Haven), CT



# Questions?

