

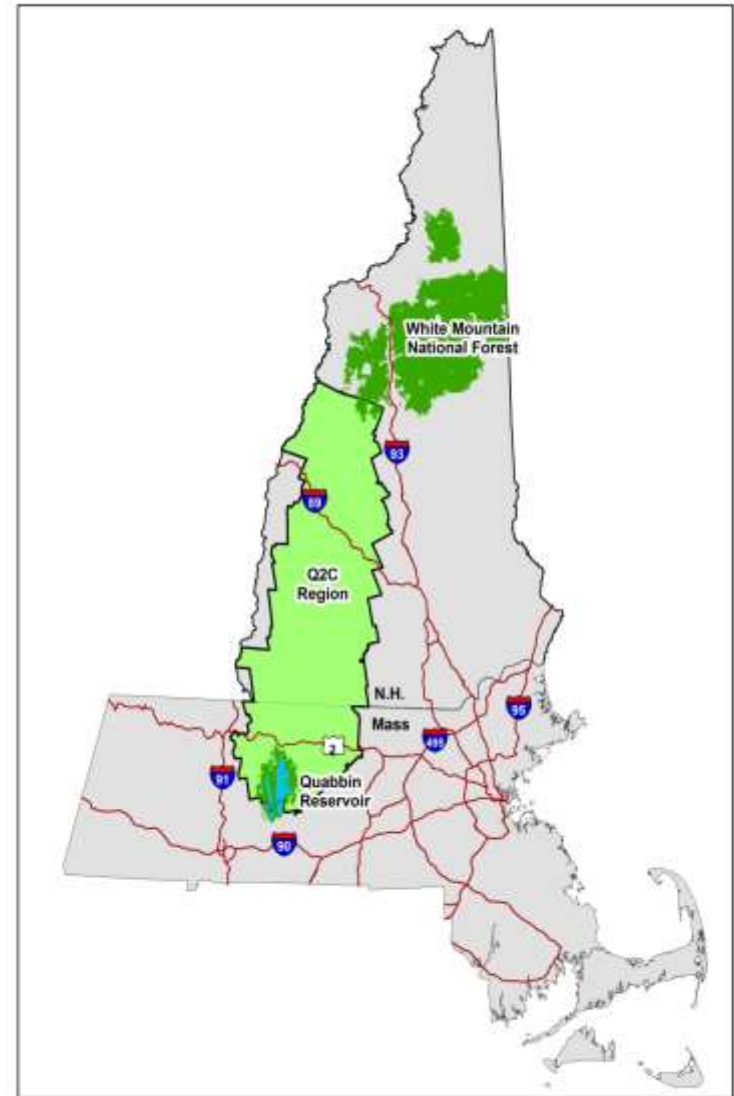


Q2C Land Conservation Grants Program

Presentation to the 2015
RCP Network Gathering
Nashua, NH

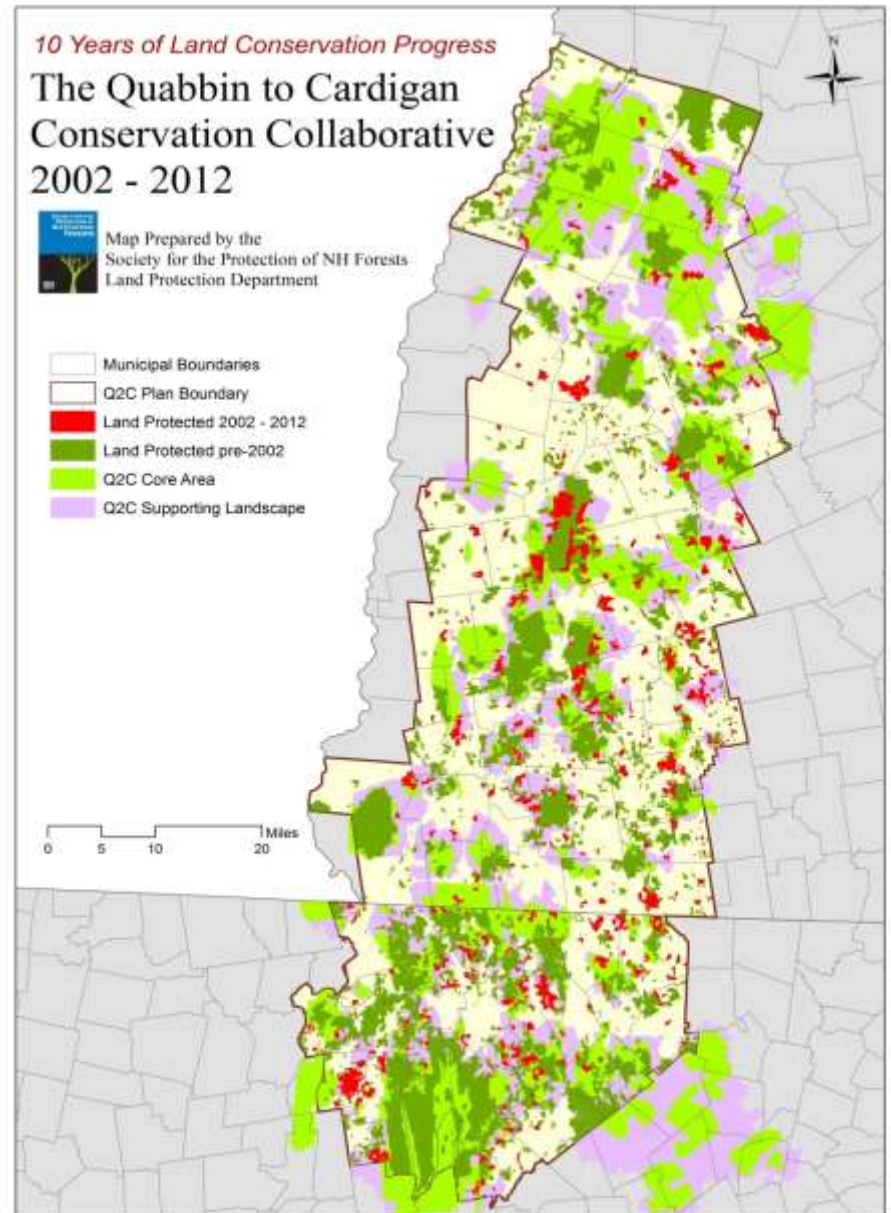
The Q2C Region

- The two-state Quabbin-to-Cardigan region spans one hundred miles from the Quabbin Reservoir in Massachusetts northward along the spine of New Hampshire to the southern boundary of the White Mountain National Forest.
- Encompassing approximately two million acres, the region is one of the largest remaining areas of intact forest in central New England, and is a key headwater of both the Merrimack and Connecticut rivers.



The Q2C Partnership

- Launched in 2002, a collaborative effort of more than twenty private organizations and public agencies working on land conservation
- The Partnership adopted a conservation plan in 2007 that prioritizes the region's most ecologically significant forests, and key connections between them for wildlife passage and human recreation.
- Over the past ten years, the Q2C partners have helped permanently protect an additional 90,000 acres of land in the region - 62,000 acres in New Hampshire and 28,000 acres in Massachusetts -- an increase of almost 22% over 2002 levels.

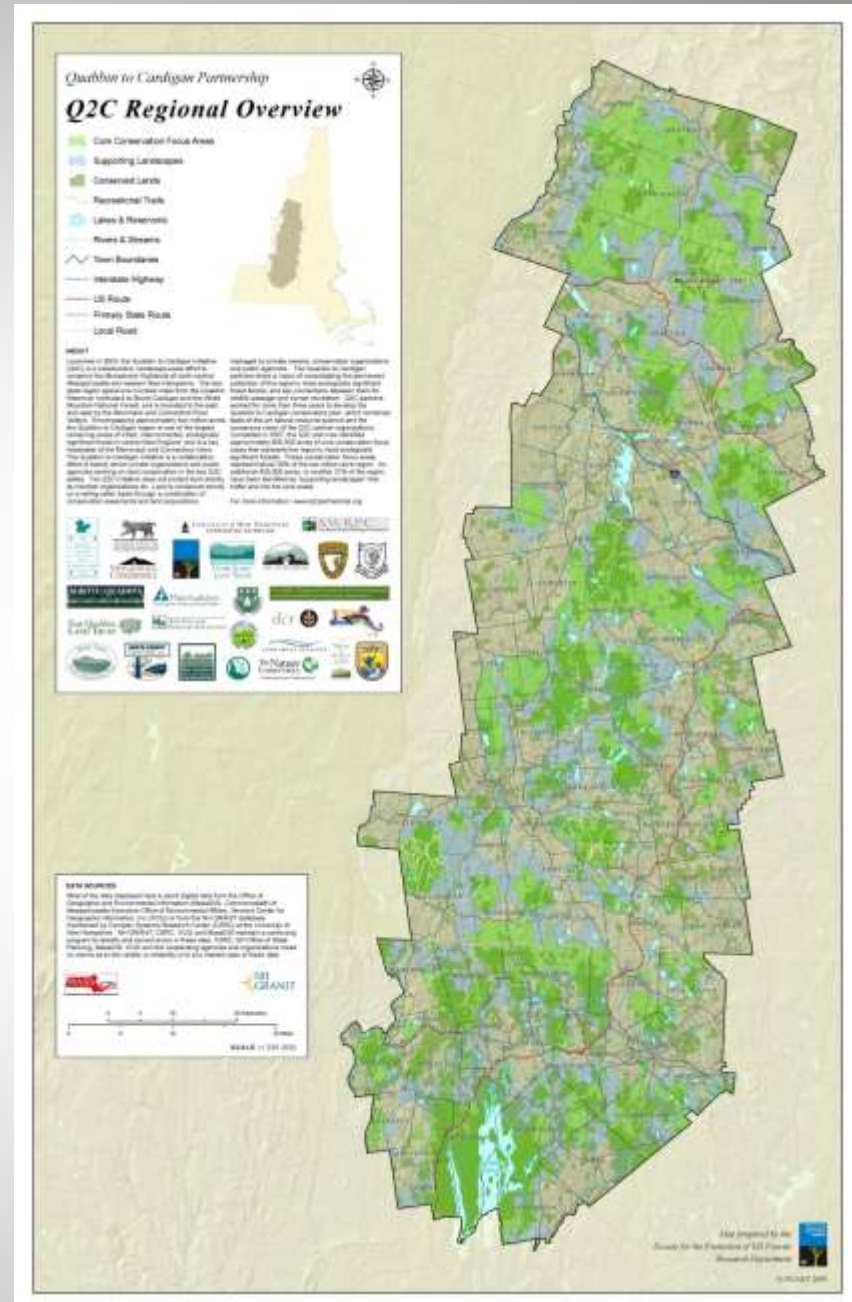


Q2C Land Conservation Grants Program

- Started in 2009 with federal funding from NRCS (via earmark over two FYs).
- \$500,000 in grants were disbursed between 2009 and 2012 over five grant rounds.
- \$300,000 in new private funding in late 2012, actively seeking more 😊.
- Just ran our eighth and as of September 2015, Q2C grants program has awarded \$845,000 to 69 projects.

How it Works

- **Eligible projects** must protect land that has been identified as “conservation focus area” and/or “supporting landscape” in the Quabbin to Conservation Plan.



How it Works

- **Eligible expenses:** grants are for transaction-related expenses on land protection projects (fee or easement). These include surveys, appraisals and appraisal reviews, attorney's services, title searches, closing services, deed preparation and negotiation, baseline document preparation, easement and land recording, and other professional services.

How it Works, Cont.

- **Who can apply:** Non-profit land trusts, municipalities, and state agencies that have land conservation as a primary function are all eligible to apply for a Q2C land conservation grant.
- **Maximum grant** per project is \$40,000. Due to heavy demand for funds in most recent round, largest grant awarded was just under \$18,000.
- **Match:** there is a 20% cash match requirement. For every \$4 received from Q2C, the applicant must provide \$1 of match.
- **Who decides?** The Q2C Partners review and decide on awards collectively. The program is administered by the Society for the Protection of New Hampshire Forests.

The Formula!

Goals

1. Reward Applicants who have more Core or Supporting acreage
2. Spread the available grant funds around to the partners

Q2C Land Conservation Grants, Round 7

FINAL Funding Approach: flat "base" amt. + ACRES of project in conservation focus area ("core") + ACRES in supporting landscape x available funds in each category (65% allocated to core acres, 35% to supporting)

Project Name	Applicant Name	Total Acres*	Q2C Core Area Acres	Supporting Landscape		Q2C Request	Flat base amt	Award based on acres of core	Award based on acres of supporting landscape	Total Award	as % of total Q2C requests
				Acres							
Jillette	ASLPT	47.66	0.13	47.53		9500	2,000	2	480	2,483	26%
Lennon	ASLPT	25.56	0.00	25.56		8,500	2,000	0	258	2,258	27%
Kohn Cons. Restriction	EQLT	18.81	6.37	12.44		3,000	2,000	120	126	2,246	75%
W. Quabbin Landscape Connections	Kestrel Land Trust	1211.49	193.19	475.57		40,000	2,000	3,641	4,807	10,448	26%
Hollow's End	Monadnock Conservancy	164.67	164.48	0.18		8,690	2,000	3,100	2	5,102	59%
West Hill-California Brook Natural Area	Monadnock Conservancy	674.00	252.42	421.57		33,640	2,000	4,757	4,261	11,018	33%
Mass. Working Forests	Mt. Grace Land Cons. Trust	465.00	137.00	325.00		40,000	2,000	2,582	3,285	7,867	20%
Engel Cons. Reservation Initiative	Comm. Mass	107.04	25.33	81.71		16,500	2,000	477	826	3,303	20%
Hager Tract	Piscataquog Land Conservancy	185.65	0.00	47.63		18,862	2,000	0	481	2,481	13%
MacNeil Family Forest	SPNHF	244.48	244.48	0.00		12,052	2,000	4,607	0	6,607	55%
Northfield Forest	TPL	1654.00	391.85	1239.71		40,000	2,000	7,385	12,531	21,915	55%
Mason Pond	Upper Valley Land Trust	132.98	132.98	0.00		14,250	2,000	2,506	0	4,506	32%
Camp Chenoa	Harris Center	183.41	172.46	10.95		5,925	2,000	3,250	111	5,361	90%
Quabbin Reservoir to Wachusett	No. County Land Trust	1255.57	1090.39	165.18		40,000	2,000	20,549	1,670	24,219	61%
Brown-Black Mountain Forest	SPNHF	219.39	120.63	90.28		17,230	2,000	2,273	913	5,186	30%
		6589.71	2,932	2,943		\$308,149	\$30,000	\$55,250	\$29,750	\$115,000	
						weighting	---	65%	35%		
							\$30,000	\$55,250	\$29,750		
						\$ per acre		\$18.85	\$10.11		

Q2C Spreadsheet Explanation of formulas

Column A & B	Project Name and Applicant	Weighting explanation	Typical property calculation: (see Brown-Black Mountain Forest by SPNHF)			
Column C	Total Acres of proposed project	Core acres are valued at 65% Supporting acres are valued at 35%	Total Acres on project	219.39		
Column D	Total Core areage which is derived from GIS data. (see GIS notes for process)		Total Core acres	120.63 (this figure is derived from GIS)		
		Final determination is as follows:		x \$19.90	(per acre price for Core)	
Column E	% of Core --this percentage is derived from the applicant's Core acres divided by Total Core acres of all applicants	(1) Multiply the flat base amount of \$2000 times the number of applications (2) Subtract this figure from the total grant award monies available		\$2,401 (total award for Core acres)	Item A	
Column F	Total Supporting areage which is derived from GIS data (see GIS notes for process)	(3) Multiply 65% of the resulting figure in (2) for core acres (4) Multiply 35% of the resulting figure in (2) for supporting acres	Total Supporting Acres	90.28 (this figure is derived from GIS)		
Column G	% of Supporting--this percentage is derived from the applicant's Supporting acres divided by Total Supporting acres of all applicants	(5) Divide the resulting figure in (3) by the total # of core acres in Column D (6) Divide the resulting figure in (4) by the total # of supporting acres in Column F		x \$10.00	(per acre price for Supporting) \$903 (total award for Supporting ac)	
Column H	Q2C request--this figure is taken from the applicant's project application.					Item B
Column I	Flat base amount of \$2000 given to each applicant		Flat base amount	\$2,000		Item C
		Example:	Total Award	\$5,304 (sum of Item A, B, C)		
Column J	Award based on core acres--this is derived from the applicant's core acres (as above in Column D) times the price per acre	(1) \$2000 x 15 applications = \$30,000 (2) \$115,000 - \$30,000 = 85,000				
Column K	Award based on supporting acres--this is derived from the applicant's supporting acres (as above in Column F) times the price per acre	(3) \$85,000 x 65% = \$55,250 (4) \$85,000 x 35% = \$29,750				
Column L	Total award--this is the sum of Column I, J, K--or flat base plus award based on core plus award based on supporting	(5) \$55,250 divided by 2776 acres (Column D) = \$19.90 (6) \$29,750 divided by 2976 acres (Column F) = \$10.00				
Column M	% of request--this figure is the percentage of the applicant's request vs. the final award amount.					

Goals & Results

- **Implement the Q2C plan:** grant program has awarded \$845,000 to 69 projects that have helped conserve almost 26,000 acres of land.
- **Benefit to Partner:** Most partners have received a grant
- **Leverage resources:** \$845,000 in awards has leveraged \$37 million in project value, mostly in the form of donated land or easement value.
- **Sustain the Q2C partnership:** The Q2C grant program has given the partners an ongoing, concrete project with direct benefits to the members.

Trails Grant Program Added in 2013

Q2C Trails			
	# Grants Awarded	Awarded	Trails/Miles
Round 1-May 2013	7	\$ 48,674.00	16
Round 2 - March 2014	7	\$ 24,829.00	18
Round 3 - Sept. 2014	4	\$ 25,150.00	6.5
Round 4 - March 2015	10	\$ 75,041.00	30
Round 5 - Sept. 2015	pending		
	28	\$ 173,694.00	70.5

