

STRAIGHT FROM THE SOURCE: Working with Water Suppliers

Anna Boudreau, Truslow Resource Consulting LLC,
Salmon Falls Watershed Collaborative

Robert O'Connor, Massachusetts Office of Energy and
Environmental Affairs

Alex Chuman, Aquidneck Land Trust and Newport Water
Collaborative.

Moderator: Christopher Riely, Providence Water.

RCP conference – November 18, 2015



*Collaborating with organizations and professionals
to evaluate and resolve land and water resource issues*



:: 454 Court Street :: Suite 304 :: Portsmouth, NH 03801 :: (603) 766-6670 :: www.truslowrc.com

Anna H. Boudreau, Land Conservation Consultant

My colleagues:

Danna B. Truslow, Principal and Hydrologist

Samantha Wright, Geomorphologist, GIS Specialist

OUR WORK INVOLVES...



Hydrology, Geomorphology & Restoration



Source Water Protection



Land Conservation Planning & Project Management



Groundwater & Surface Water Quality Sampling



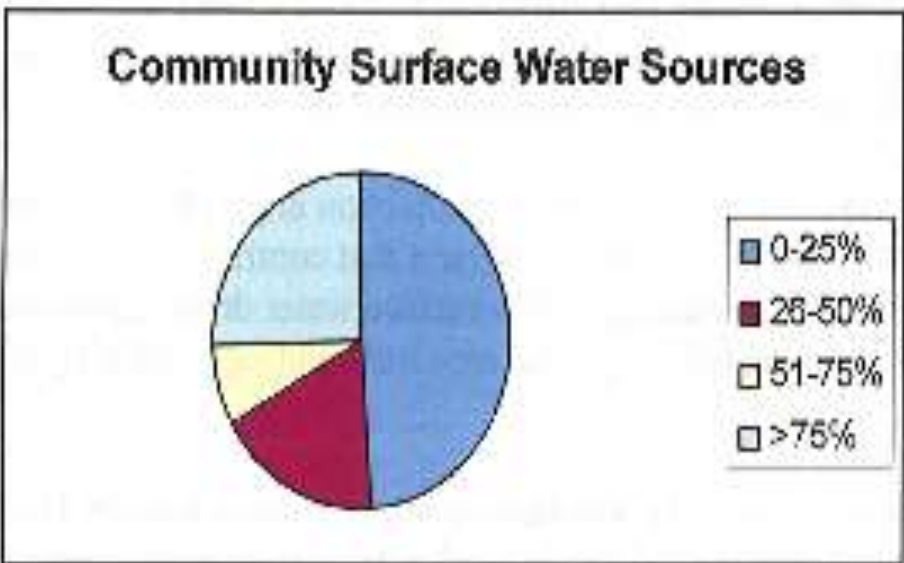
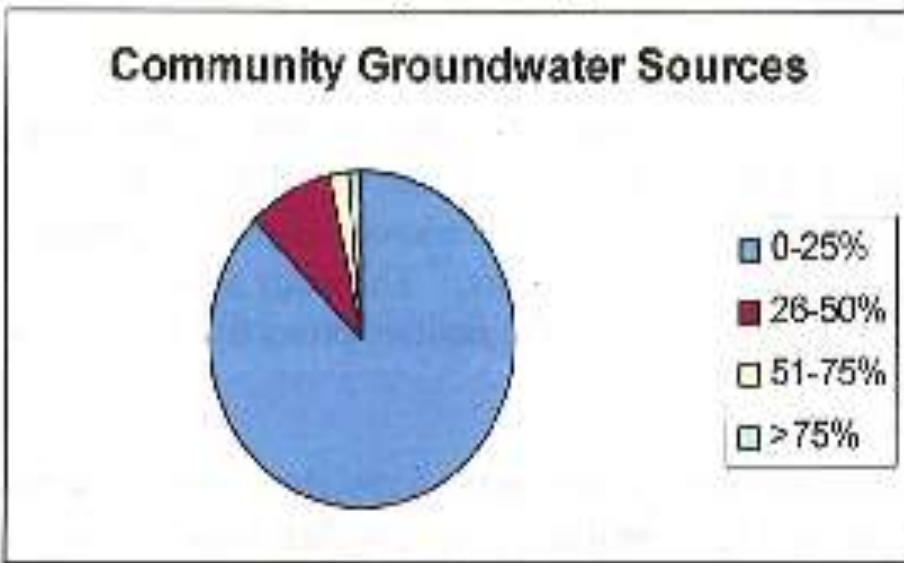
GIS Mapping & Analysis



Resource Planning/ Management



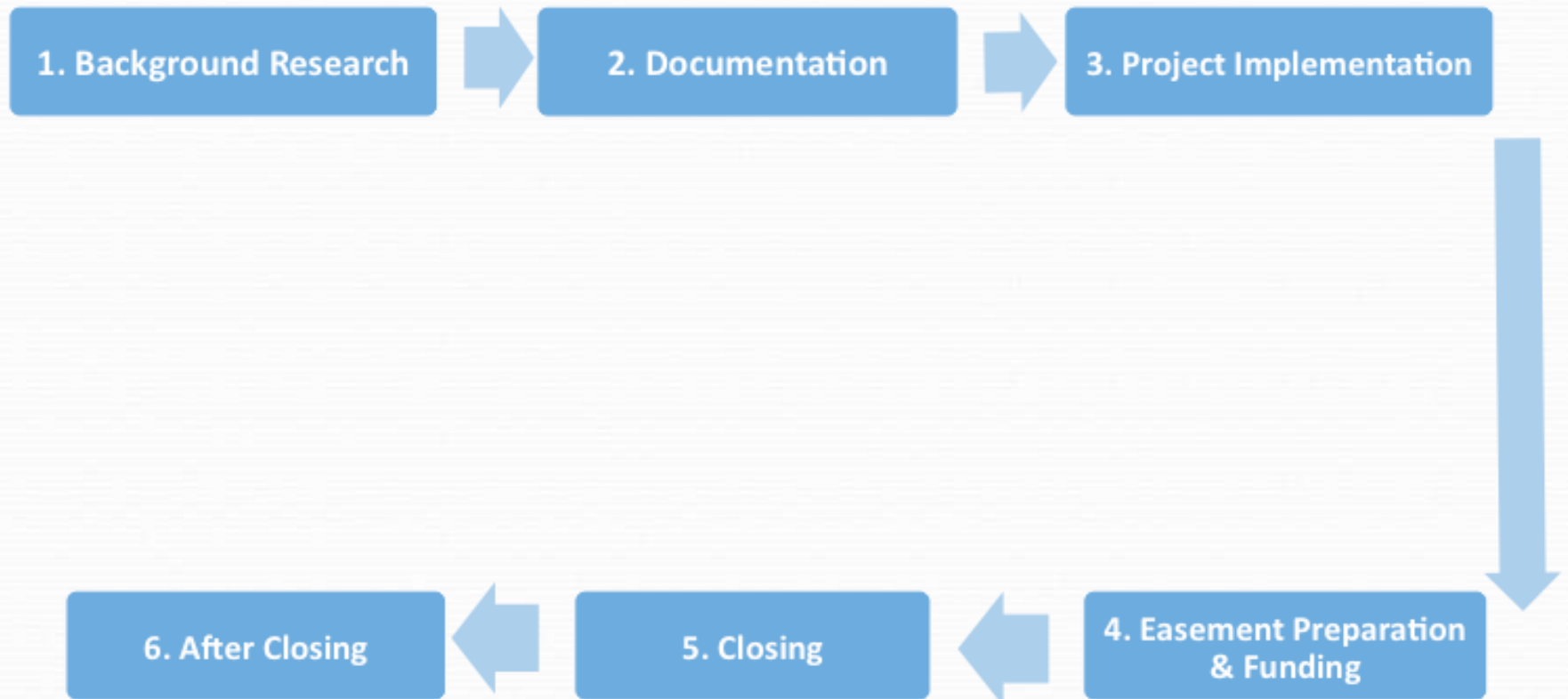
Percentage of land protected in source water protection areas at community water systems



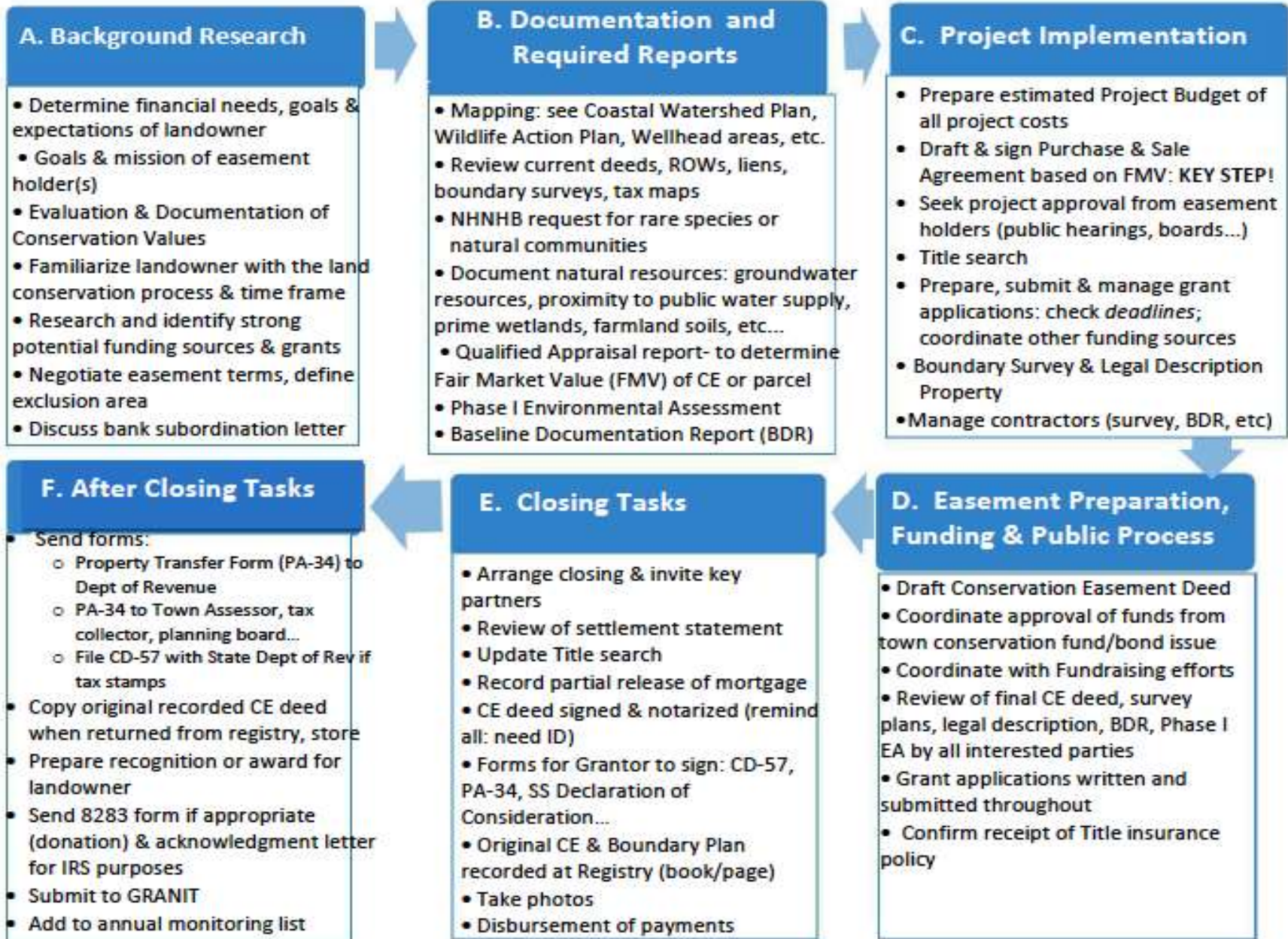
The large majority of ground water sources have less than 25% of their wellhead protection areas permanently protected.

More than half of the registered community surface water sources have 25 % or more of their source water protection area land permanently protected.

The Land Conservation Process



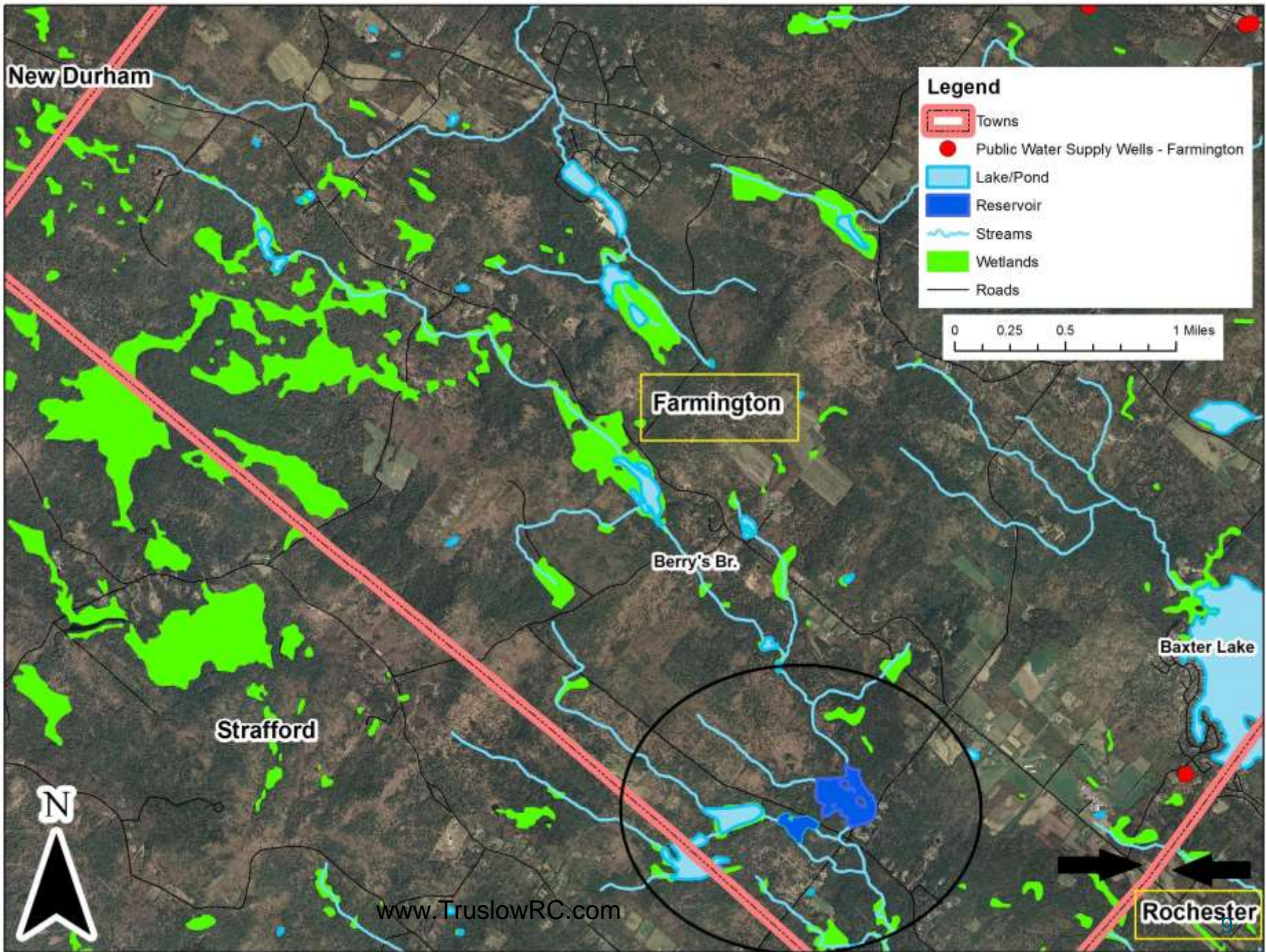
THE LAND CONSERVATION PROCESS *(not linear; many tasks overlap)*



A practical real world example



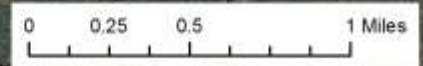
City of Rochester - Water Supply Reservoir Protection Project



New Durham

Legend

- Towns
- Public Water Supply Wells - Farmington
- Lake/Pond
- Reservoir
- Streams
- Wetlands
- Roads



Farmington

Berry's Br.

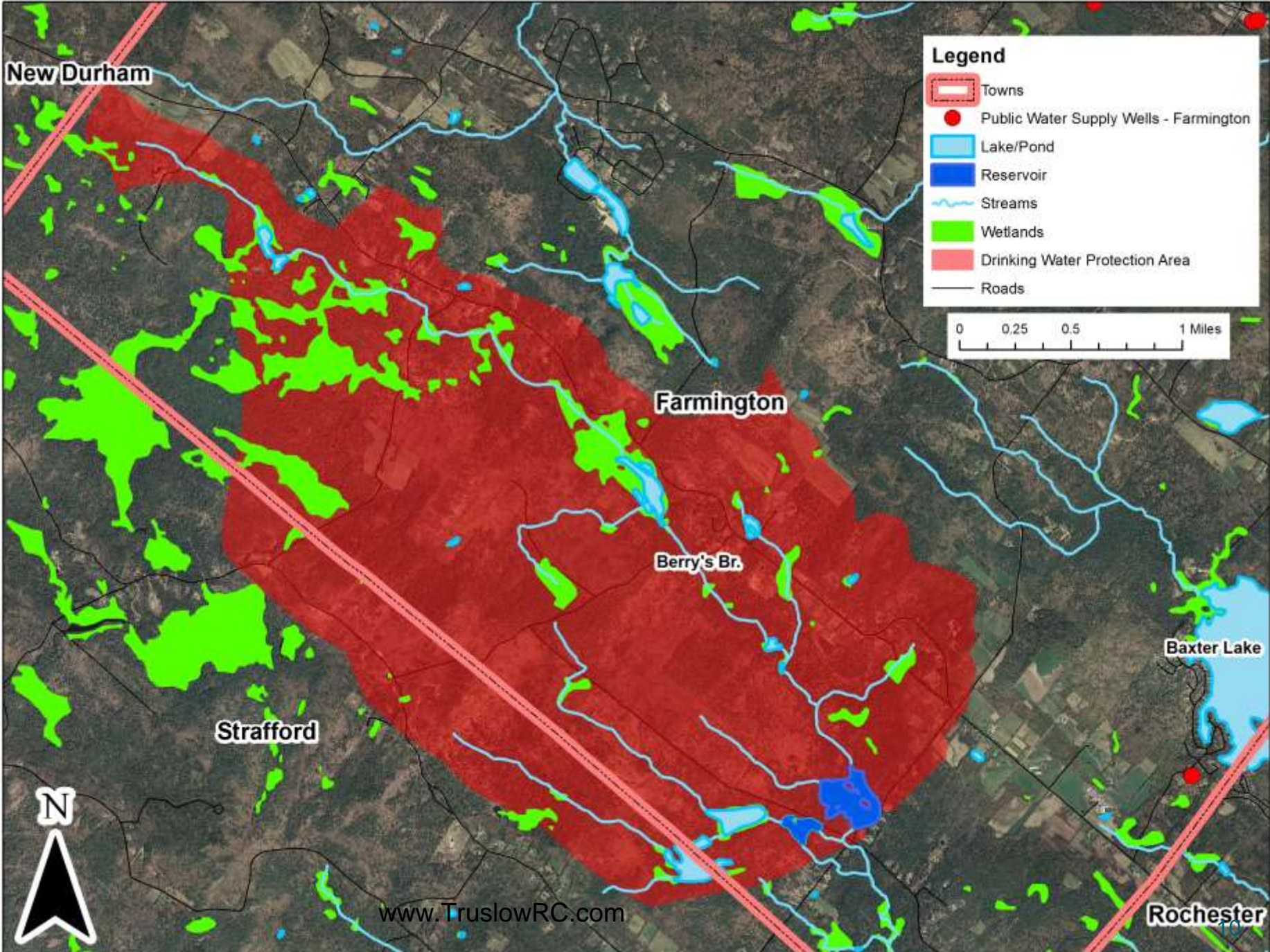
Baxter Lake

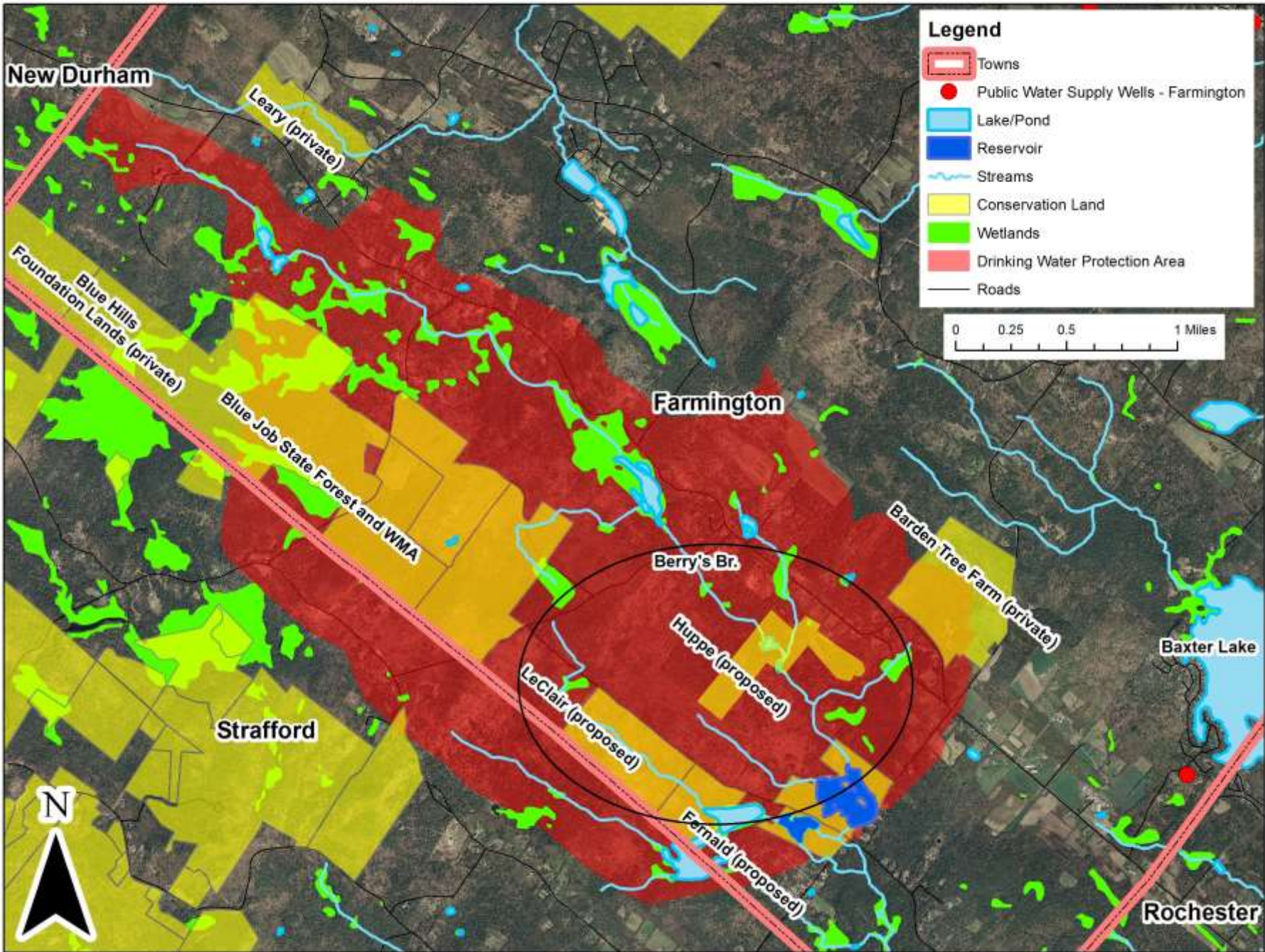
Strafford



www.TruslowRC.com

Rochester

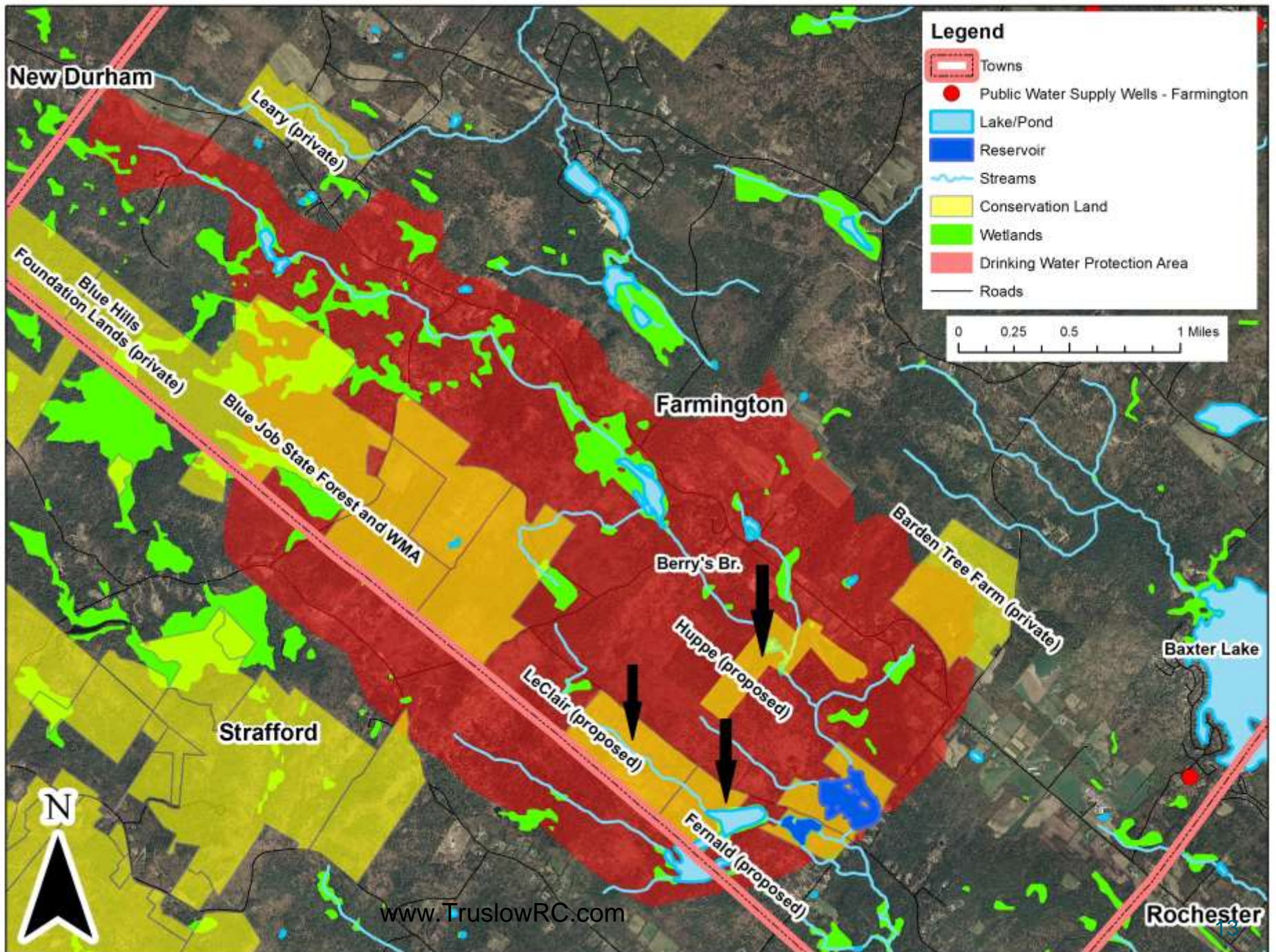




PARTNERS & COLLABORATORS

CITY of ROCHESTER DRINKING WATER SUPPLY PROTECTION PROJECT

- The Landowners
- Town of Farmington Conservation Commission
- NH Fish and Game Department
- City of Rochester Public Works
- NH Dept of Environmental Services Water Supply Division
- The regional land trust - now merged with Southeast Land Trust of NH (SELT)
- Statewide Land Trust - SPNHF



Take Home Messages



- **The importance of collaboration**
- **Reach out to local water suppliers** (private or public)
 - **DO YOUR HOMEWORK, CLEARLY OUTLINE YOUR PROPOSED PLAN TO PARTNERS**
- **Connect with other Departments in town**
 - **Planning Department, Public Works; Water Dept.**
- **Reach out to neighboring cities or towns**
- **Stay focused & BE PATIENT WITH THE PROCESS!**

Questions?

