



# Implementing the Connecticut River Watershed Landscape Conservation Design

Kim Lutz, Friends of Conte

Sarah Wells, North Quabbin Regional Landscape

Partnership



A lush green forest with tall trees and sunlight filtering through the canopy. A white rectangular box with a yellow border is centered on the slide, containing the title and list. The bottom right corner has a small white box with the letters 'SW'.

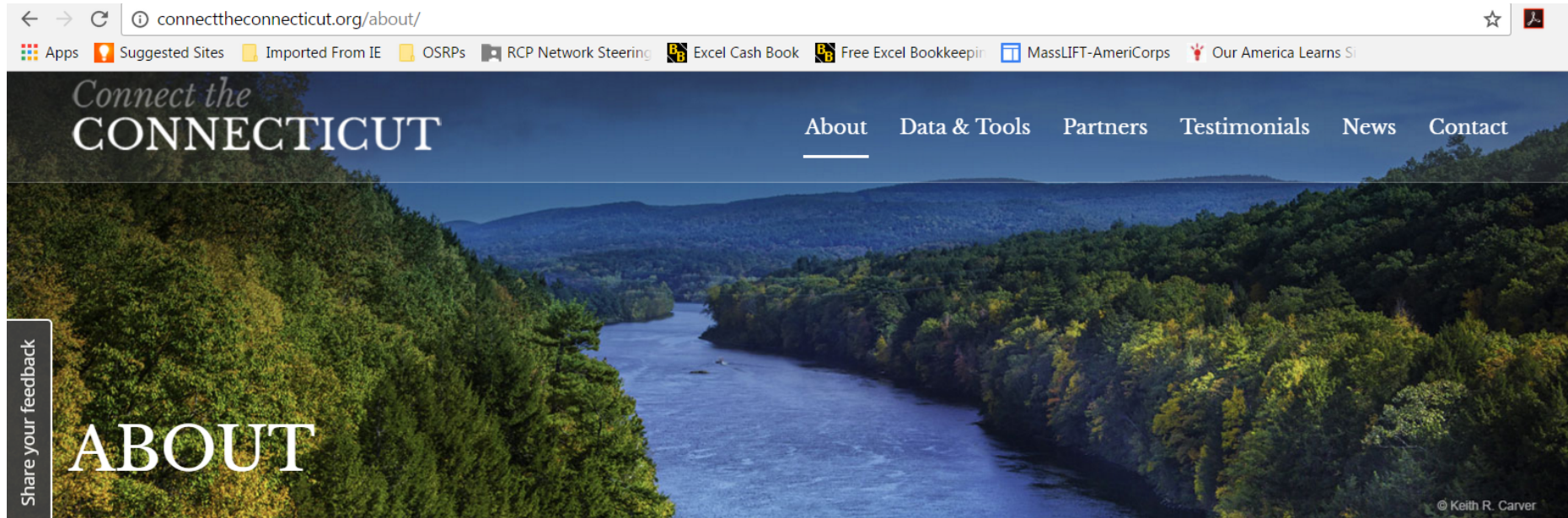
# “Connect the Connecticut” Discussion

- What is it?
- How could RCPs use it?
- Why should RCPS use it?

# What?

# How?

# Why?



## A shared strategy for conserving the Connecticut River watershed

Encompassing New England's largest river system, the Connecticut River watershed provides important habitat for a diversity of fish, wildlife and plants — from iconic species like bald eagle and black bear to federally threatened and endangered species like shortnose sturgeon, piping plover, and dwarf wedgemussel. For the millions of people living in Vermont, New Hampshire, Massachusetts, and Connecticut, the watershed is a source of clean water, recreation, food, jobs, and more. As the defining geography for the **Silvio O. Conte National Fish and Wildlife Refuge**, it is part of a national network of areas considered to have special significance for conservation.





Connect the Connecticut provides a regional context for decisions at any scale, and include supporting data that can help address questions related to land use and management, such as:

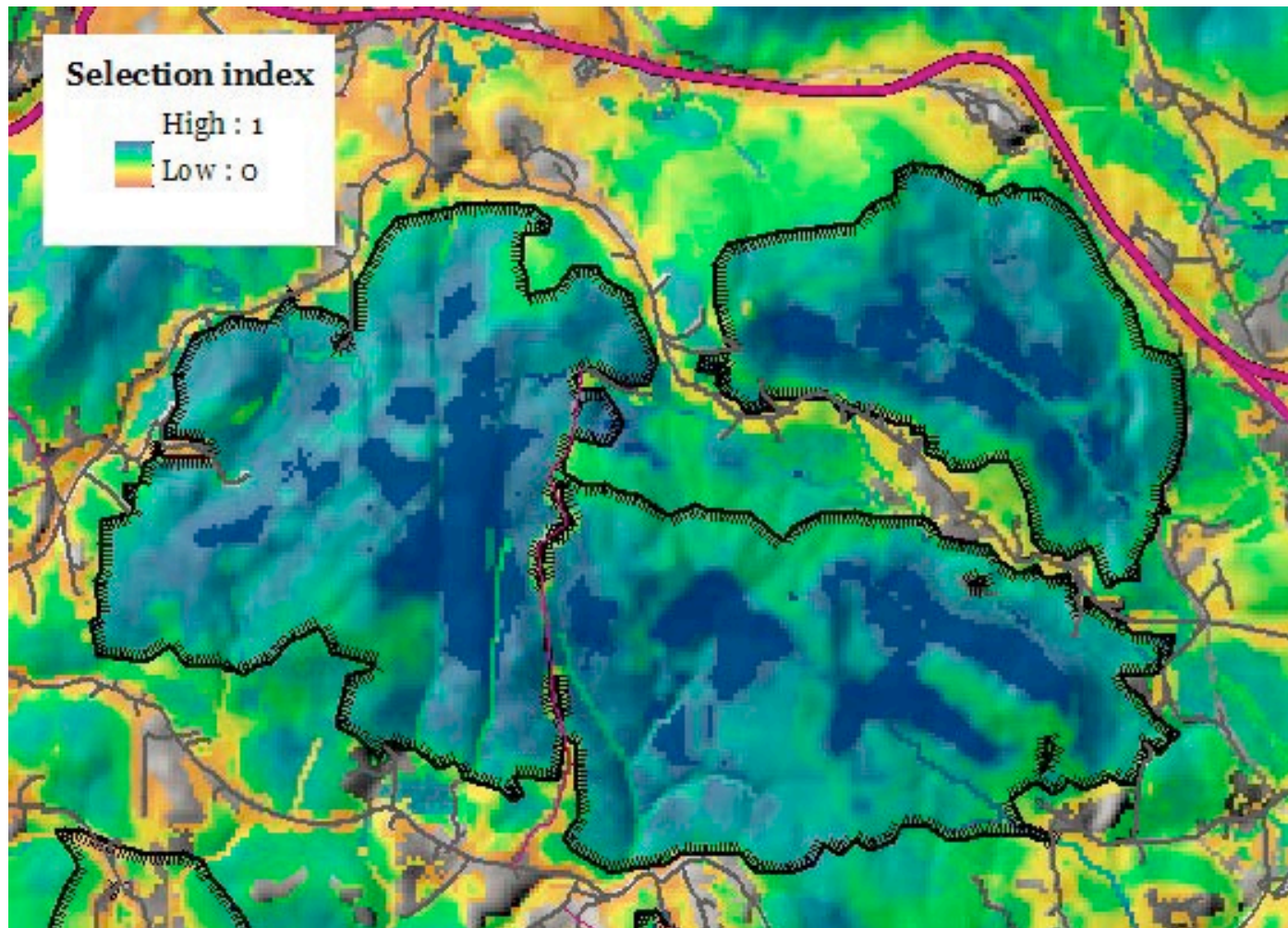
- Where do important ecosystems and species habitats occur and overlap?
- Where will climate change and sea level rise place the most stress on the landscape?
- Where is development most likely to occur in the coming decades?



What?

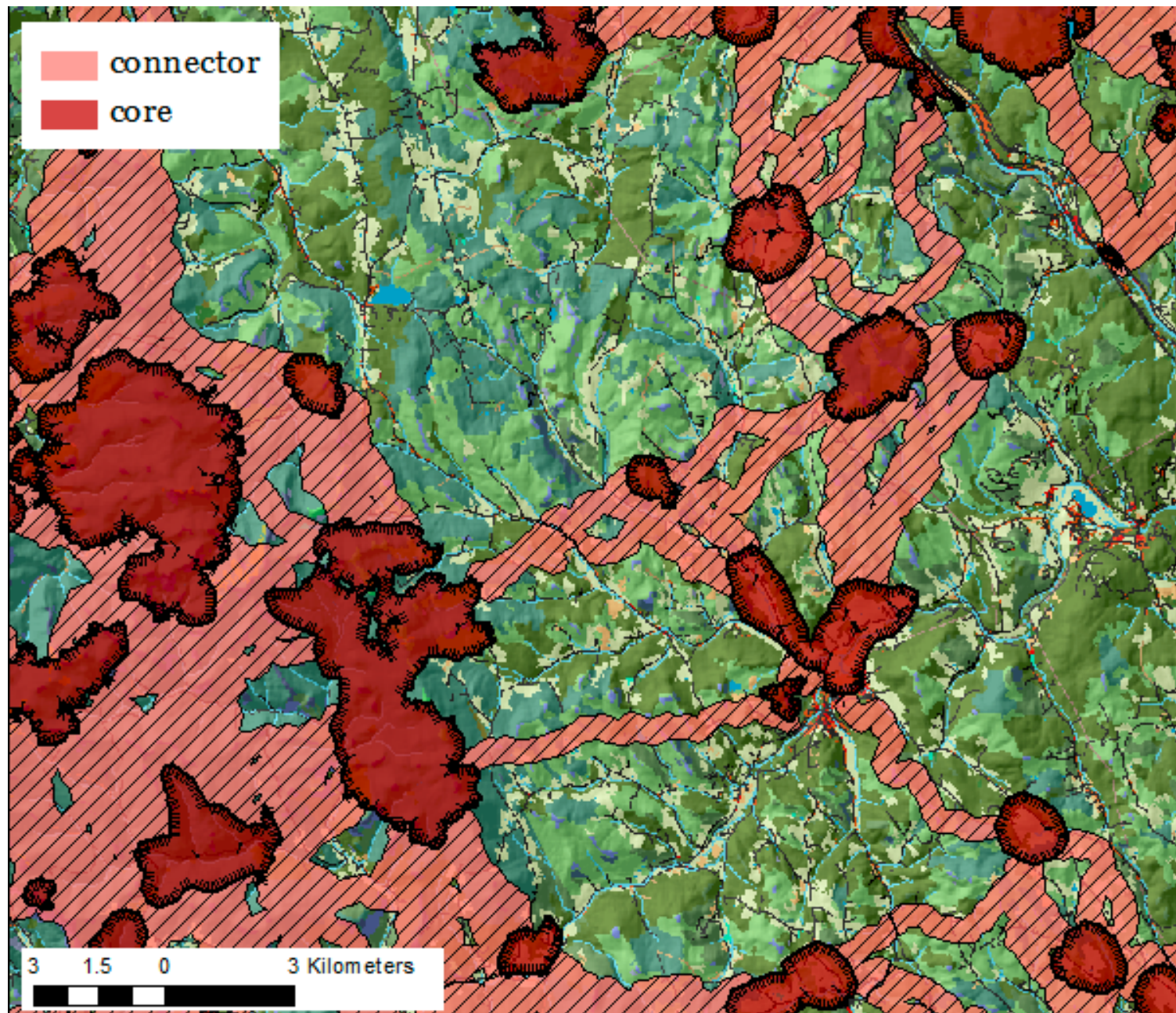
How?

Why?



Ecological Integrity



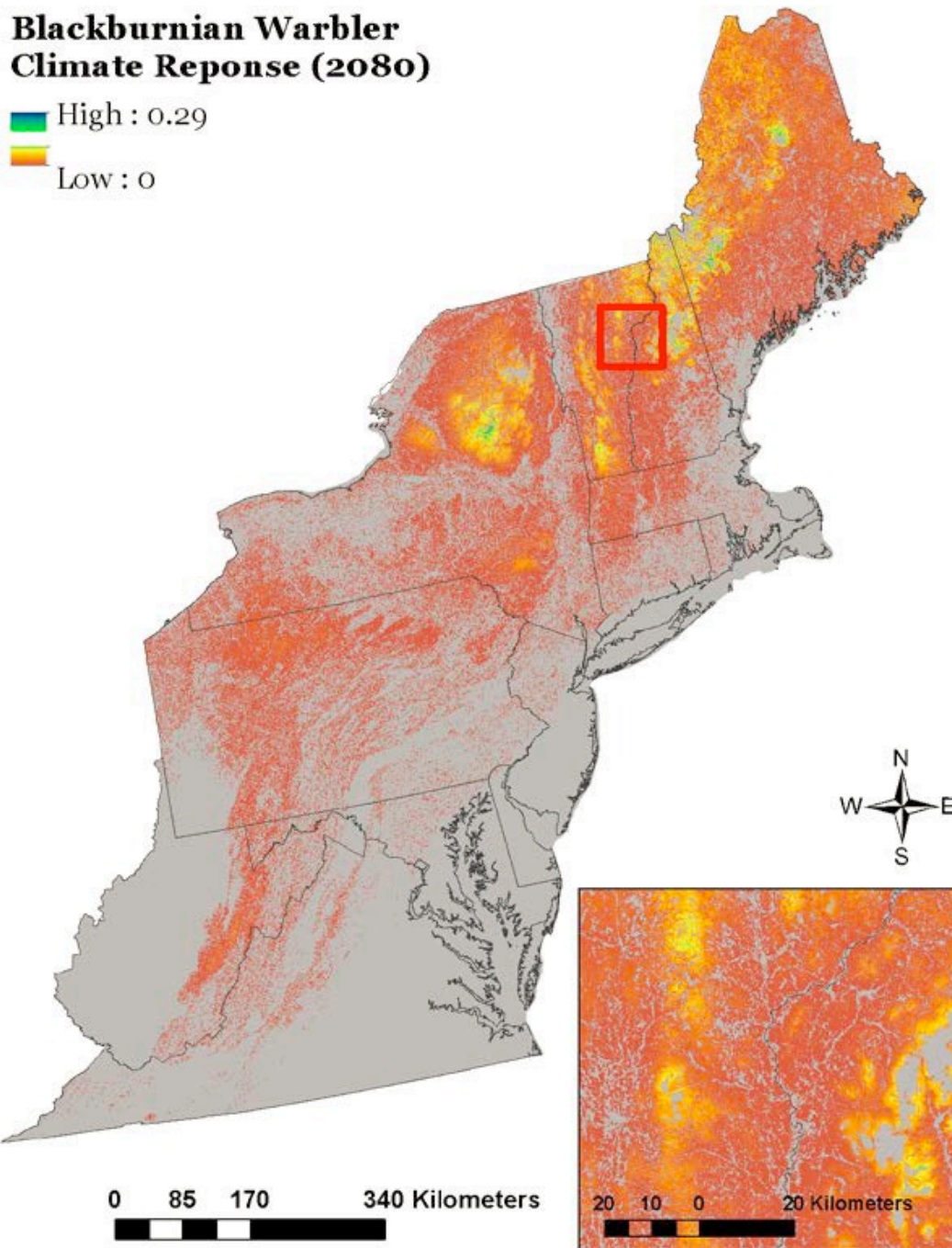


Cores and Connectors



# Blackburnian Warbler Climate Reponse (2080)

High : 0.29  
Low : 0



## Resiliency and Species modeling

Species	Habitat
Wood Thrush	Mature deciduous forest
American Woodcock, Ruffed Grouse	Young deciduous forest
Black Bear	Large forest blocks
Moose, Blackburnian Warbler	Mixed coniferous and deciduous forest
Blackpoll Warbler	Spruce-fir forest
Prairie Warbler	Pine barrens and young forest
Eastern Meadowlark	Grasslands
Louisiana Waterthrush	Riparian and floodplain forest
Northern Waterthrush, Wood Duck	Forested wetlands
Brook Trout, Wood Turtle	Streams and associated uplands
Alewife, American Shad, Blueback Herring, Shortnose Sturgeon, Sea Lamprey	Rivers
Marsh Wren	Marshes

# “Connect the Connecticut” Discussion

- What tools are you currently using?
- How could this resource help you make even better decisions?
- What additional information/training would you need to use this resource?



What?

How?

Why?


# Engage Co-Conservers

## Ex: check in with RCP members

<https://databasin.org/galleries/e51d8d30bb1c48329326d24160bf832>

[ed Sites](#) [Imported From IE](#) [OSRPs](#) [RCP Network Steering](#) [Excel Cash Book](#) [Free Excel Bookkeeper](#) [MassLIFT-AmeriCorps](#) [Our America Learns Si](#)


[Sign Up](#) [Sign In](#) [Support](#) [English](#)



Search in this gallery

[Get Started](#) [Explore](#) [Create](#) [Community](#) [My Workspace](#)


DATA BASIN | GALLERIES | CONNECT THE CONNECTICUT



## Connect the Connecticut

Created by North Atlantic LCC


Mar 5, 2014 ( Last modified Dec 9, 2015)




### About

Connect the Connecticut is a collaborative effort to identify the best places to start: the areas within the watershed that partners agree are priorities for conservation to ensure that important species, habitats, and natural processes will be sustained into the future — even in the face of climate and land use change.




Facilitated by the U.S. Fish and Wildlife Service (FWS) and supported by the North Atlantic Landscape Conservation Cooperative (LCC), a team of more than 30 partners from state and federal agencies and private organizations spent more than a year developing a conservation "design" for the watershed using the best available science. Outlining a network of core areas, or intact, connected, and resilient places within the watershed, the design serves as a roadmap for conservation. It includes a variety of datasets and tools people from all sectors can use voluntarily to make more informed decisions about managing lands and waters.




**Recommended by Tosha Comendant**

 This gallery is visible to everyone

### Gallery contains

-  4 Folders
-  59 Datasets
-  2 Maps

### Usage

 bookmarked by 3 members

For complete details on this design project see: [Landscape Conservation Design Technical Report](#) provided by the University of Massachusetts. For guidance using the data, please see **Appendix B**

For more information, see the following websites:

**Connect the Connecticut website:**  
<http://c.connectthecconnecticut.org/>

What?

How?

Why?

## Engage Co-Conservers

Ex: working with landowners to conserve land!





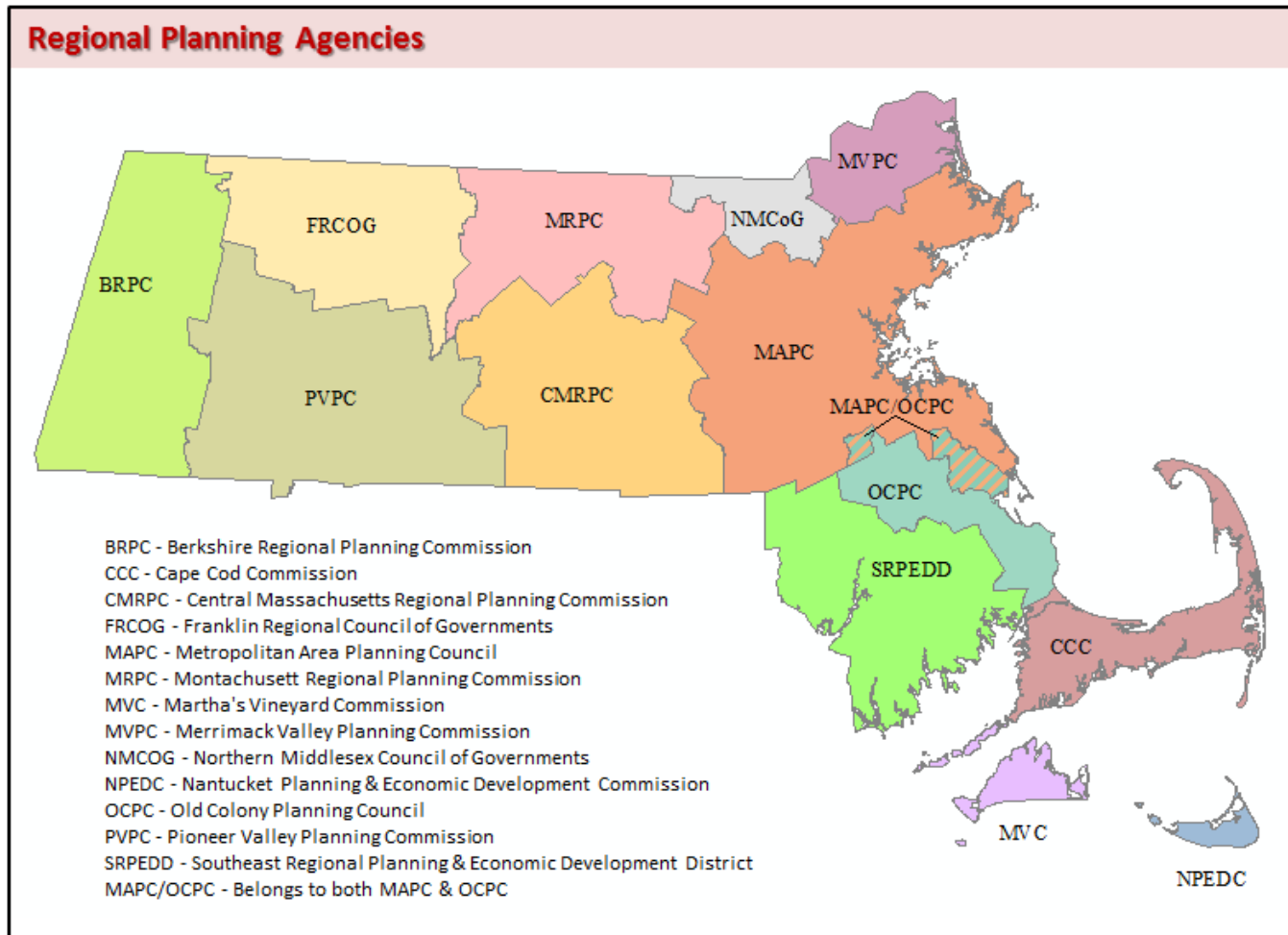
What?

How?

Why?

## Engage Co-Conservers

Ex: outreach to planning agencies




What?

How?

Why?

## Engage Co-Conservers

EX: Friends of Conte with Mass Forest Alliance and NH Timberland Owners Association



U.S. Fish & Wildlife Service

**Silvio O. Conte**  
*National Fish & Wildlife Refuge | Connecticut, Massachusetts, New Hampshire and Vermont*

A UNIT OF THE  
National Wildlife  
Refuge System

 Visit    Wildlife & Habitat    About the Refuge

CONSERVATION

- Draft CCP - EIS
- CCP Newsletters
- CCP Schedule
- Get Involved with the CCP


### Comprehensive Conservation Planning




*The purpose of a comprehensive conservation plan (CCP) is to guide refuge management over the next 15 years. The plan includes goals, objectives, and strategies for refuge programs, and details the*

 Print     Share

FOLLOW US ONLINE

 MAPS

 MULTIMEDIA

WHAT WE DO

- Resource Management
- Conservation
- Get Involved
- Partnerships



## New Funding

- Catalyst fund
- Impact investing
- New federal or private funding



## “Connect the Connecticut” Discussion

- Which of these funding themes seem most promising?
- Are you willing to explore feasibility with a small team?



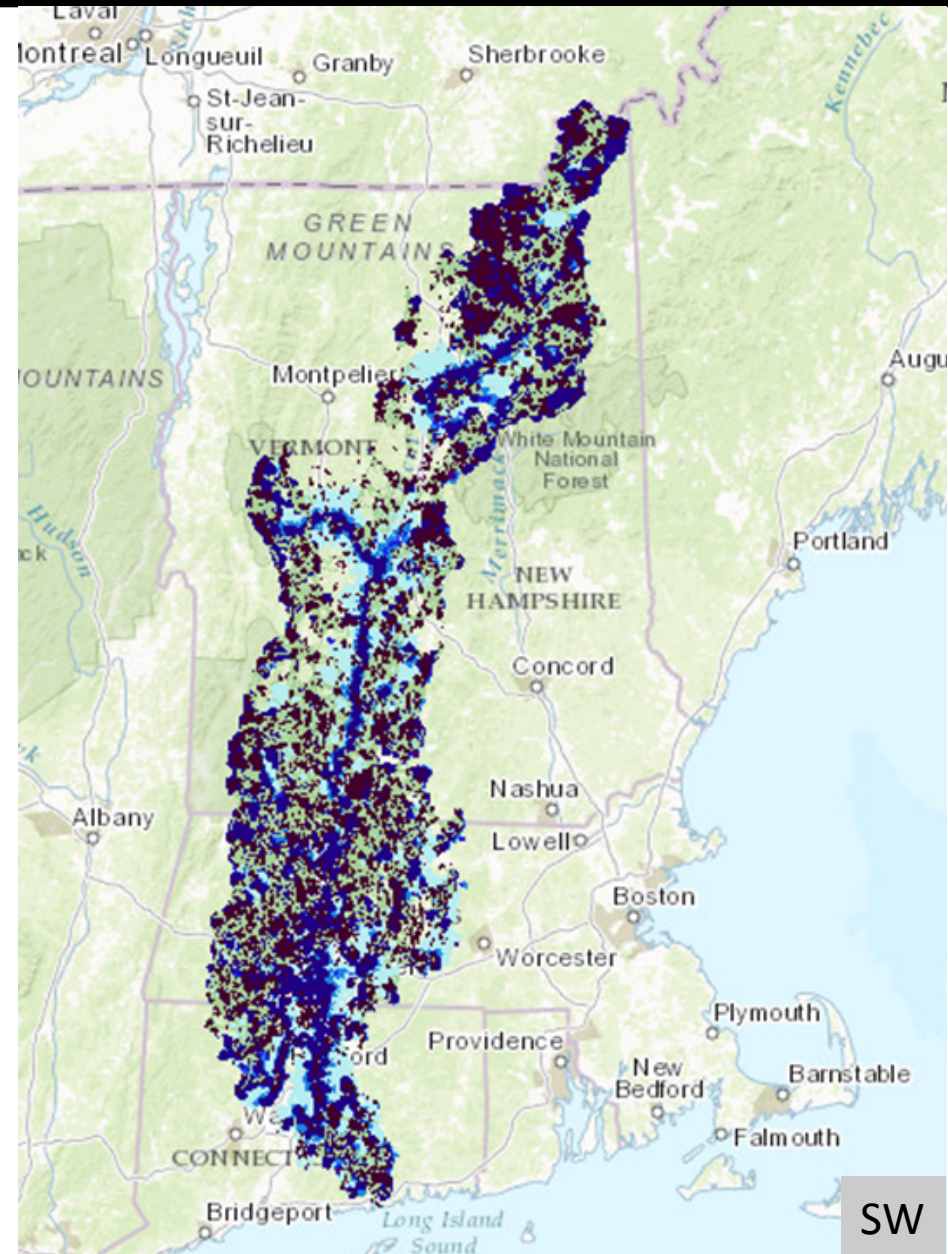
What?

How?

Why?

## New Funding

- Federal funding
  - NRCS



What?

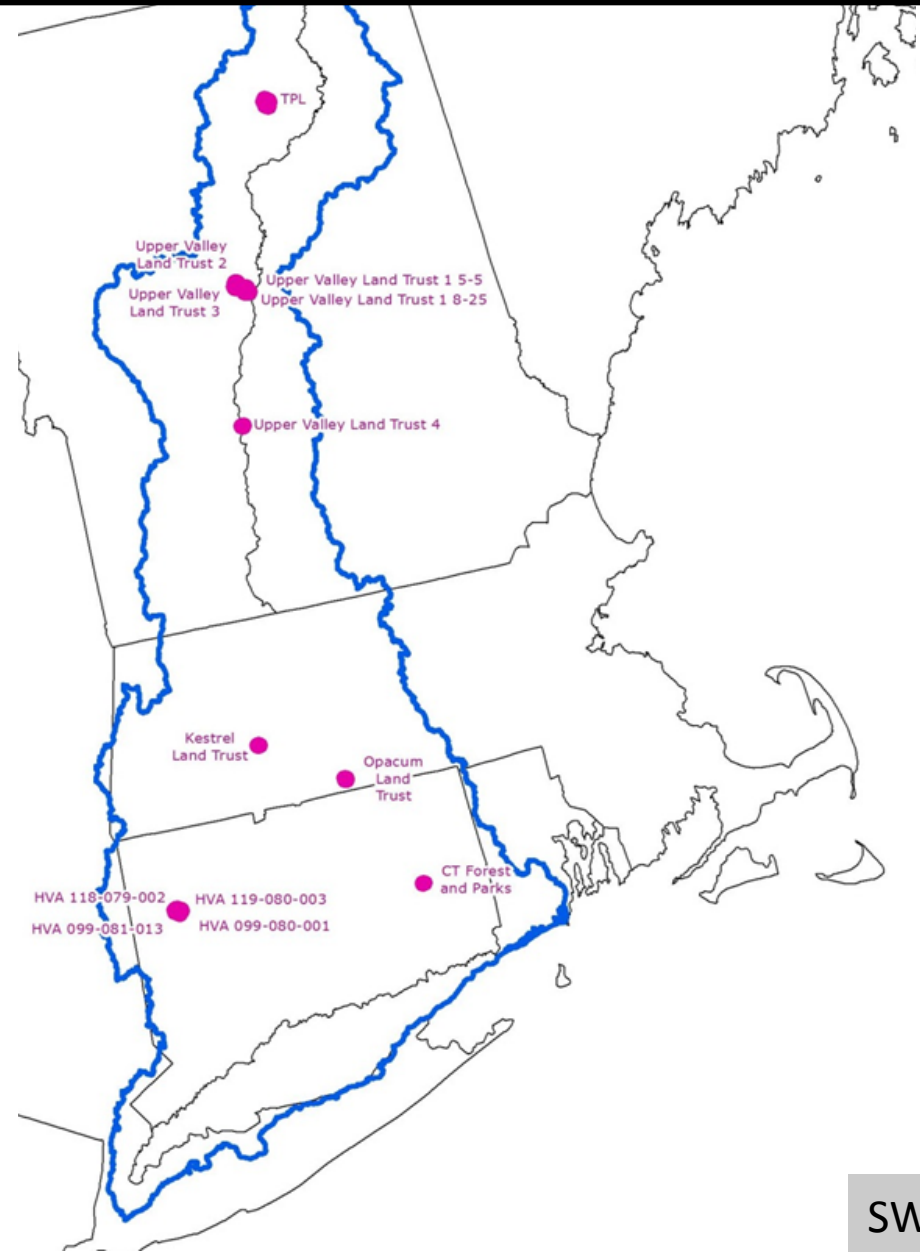
How?

Why?

## Ex: Current Funding

### Long Island Sound RCPP Healthy Forest Reserve Program - 2016 Grant Round

- Nine Applications
- 3500 acres in all
- All Nine Applications have RCP members as partners





A lush green forest with tall trees and sunlight filtering through the canopy. A yellow rectangular box is overlaid on the center of the image, containing text and a bullet point.

## “Connect the Connecticut” Discussion

- What are your thoughts for accessing new federal funding streams?



A photograph of a forest path. Sunlight filters through the trees, creating dappled light on the ground. A low stone wall runs across the middle ground. The path leads into the distance. A white text box with a yellow border is overlaid on the upper part of the image.

“Connect the Connecticut”

Open Discussion